

# Making Bliss Liveable by Enabling Street Dialogue

Whitney Burdge, Elyssar Doumit, Yara Hamadeh, Nada Abu Zainab, Marc Antoine Matta

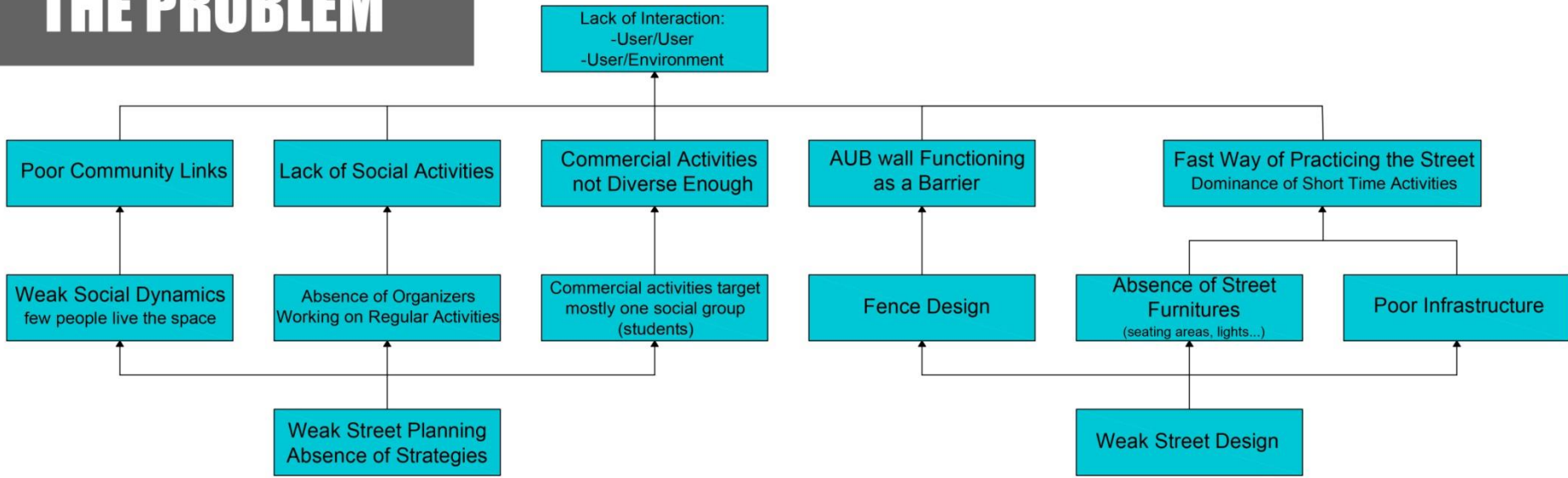


dpu summerLab 2015

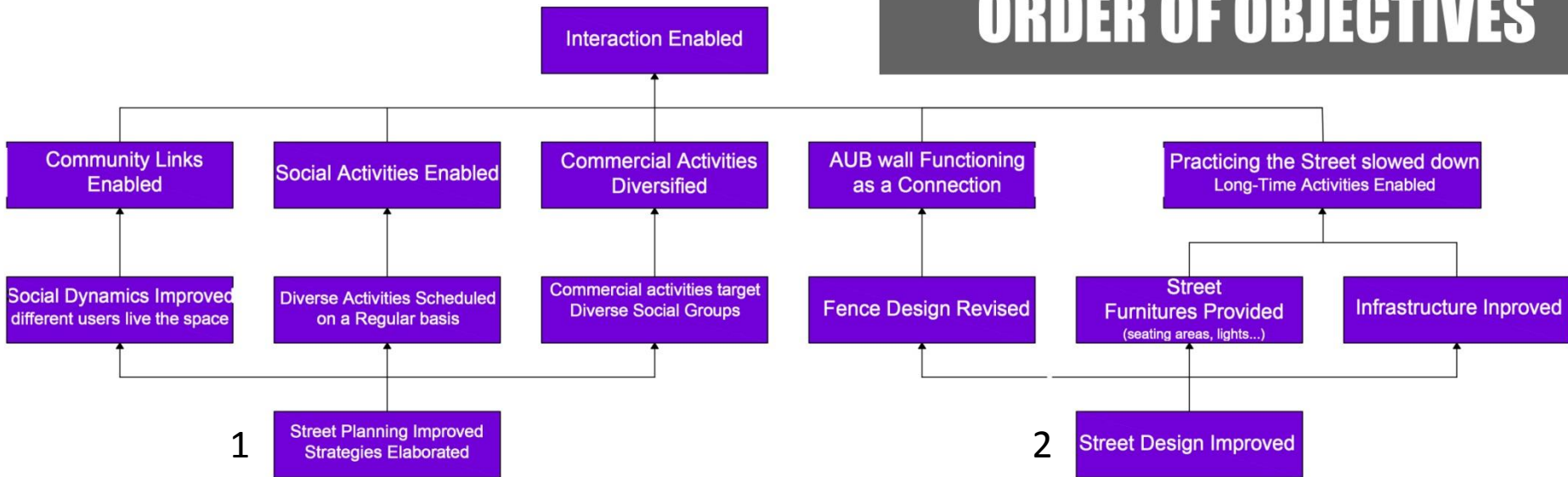
# AREA OF STUDY



# THE PROBLEM



# ORDER OF OBJECTIVES



# Bliss Street acts as a physical barrier between the campus and the other side



# Conflict between Traffic & Pedestrian



# STUDY ON THE SIMILARITY IN SHOP OFFERING

 restaurants with similar offering



# Conceived

Who Controls the street?

**Dominance of AUB (Campus-Users)**

**Street mental map: Aub determines users' boundaries, lifestyle, activities and mobility...**

**Real Estate**

# Practiced

Practices in Bliss street are determined by Age, Gender and Class

**Women practices: Short time activity**

**Man as a "Rambler"**

# Lived

Daily routine-Social tactics

**Women: safety, pavement condition...**

**Social tactics in relation to accessibility are not allowed as few people are able to enter AUB**

**Symbolism and naming are as well determined by AUB (e.g. main gate-medical gate...).**

# BLISS STREET USER ANALYSIS

Where are the points of interaction? Who is missing from these connections?





# INTERVIEW QUESTIONS

1. What is the purpose of your visit to Bliss?

- Hotel for tourism
- Go to work
- Go to AUB
- To run my shop



# INTERVIEW QUESTIONS

2. Which place/experience makes you feel most connected to Bliss?

- Students and festivals
- Chez Paul
- The shop I used to own and was evicted from
- Diversity of the south part
- University environment
- Take a break at Zaatar w Zweit



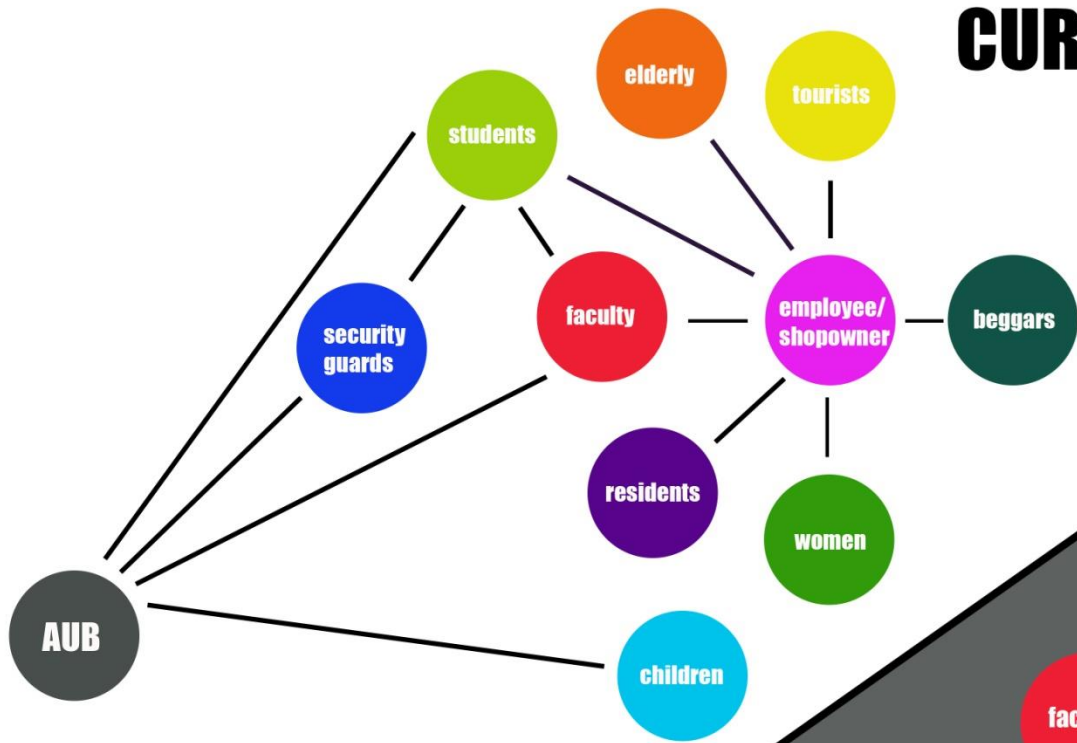
# INTERVIEW QUESTIONS

3. What is missing or what would you change on the street?

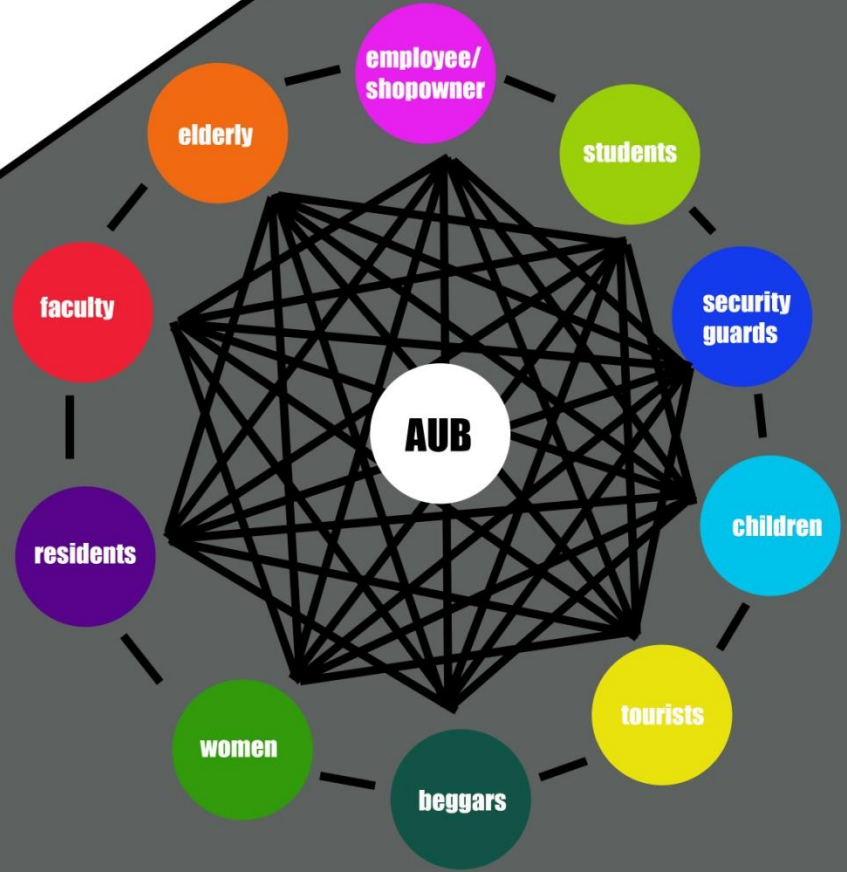
- Lights, plants and greenery. The AUB wall blocks us.
- Walking with a child is difficult.
- The shop I used to own and was evicted from
- Less crowded, problem of cars
- Infrastructure issues during winter
- Space. Parking lines and barricades.  
A place for graffiti on the wall.
- I remember the tramway.

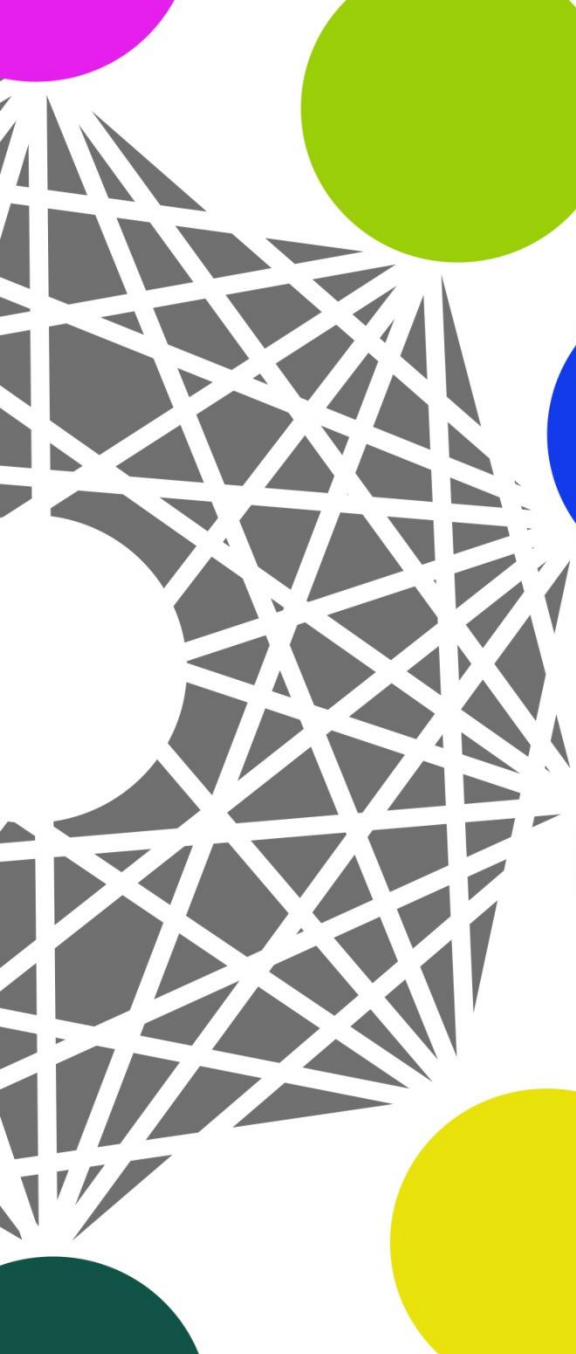


# CURRENT SEGREGATIONS



# PERSON TO PERSON IDEAL



- 
- Waiting for taxis together at a designated sitting area?
  - Attending AUB sponsored events?
    - Joining walking clubs with the elderly?
    - Using the wall as a communication platform?
      - Encouraging space for outdoor commerce with the use of a weekly pedestrianised street and market opportunity?
      - Increasing shops with a wider clientele?
    - Increase the interaction ( visual and physical permeability) between AUB campus and Bliss St?
    - Enhancing the street environment by improving the sidewalk with hardscape features such as benches and lighting elements?
      - Considering a marketing strategy to re-brand Bliss Street as a destination for interaction between many user types?
    - Encouraging commercial spaces to use products made / designed by AUB students or organisations?
  - Spearhead a weekly newsletter with local events?

## **POTENTIAL CONNECTION OPPORTUNITIES**

1

TOOL	OBJECTIVE	INPUT	STAKEHOLDERS
<b>Planning Strategies -Soft Interventions-</b>	<b>Enable different users to live and experience the street</b>	<b>1-Improve the sidewalk condition 2-Regular Maintenance 3-Incentives to keep the street clean 4-Address the needs of the elderly, children and disabled people 5-Security and Safety</b>	<b>Municipality-MPW AUB/Neighborhood Initiative Commercants NGOs, Environmentalists Users and local community</b>
	<b>Diversify the commercial activities</b>	<b>1-Revive the old commercial activities 2-Shops use regulations 3-Recommendations and assistance to property owners/renters</b>	<b>Merchants Property Owners and Renters (Old-New) Investors Local Community Clubs/NGO's/ Committees</b>
	<b>Organize activities and events</b>	<b>1-Farmers day and Artisanat day /Traditional Crafts 2-Festivals 3-Recommendations to property owners 4-Artistic &amp; Cultural Events: street furniture design made of recycled material, graffiti... 5-AUB events</b>	<b>Local Community Clubs/NGO's/ Committees e.g. Commercants Committee-AUB clubs... Artists Municipality Residents Ministries (Tourism, culture...)</b>

# Bliss Street for Transition only (Before)



# Soft Intervention: Pedestrianised Street for weekend festival/market ( After)





# Permeability Between inside campus and outside (Before)



## 2. Hard Intervention: Permeability Between inside campus and outside ( After)



# Divided Street (Before)



# Hard Intervention: Safe and accessible cross-connection/parklets ( After)







before



after



# Break the wall to create gathering spaces

-  AUB original wall
-  AUB proposed wall
-  Proposed spaces
-  Proposed spaces for the shops



# AUB Wall (Before)

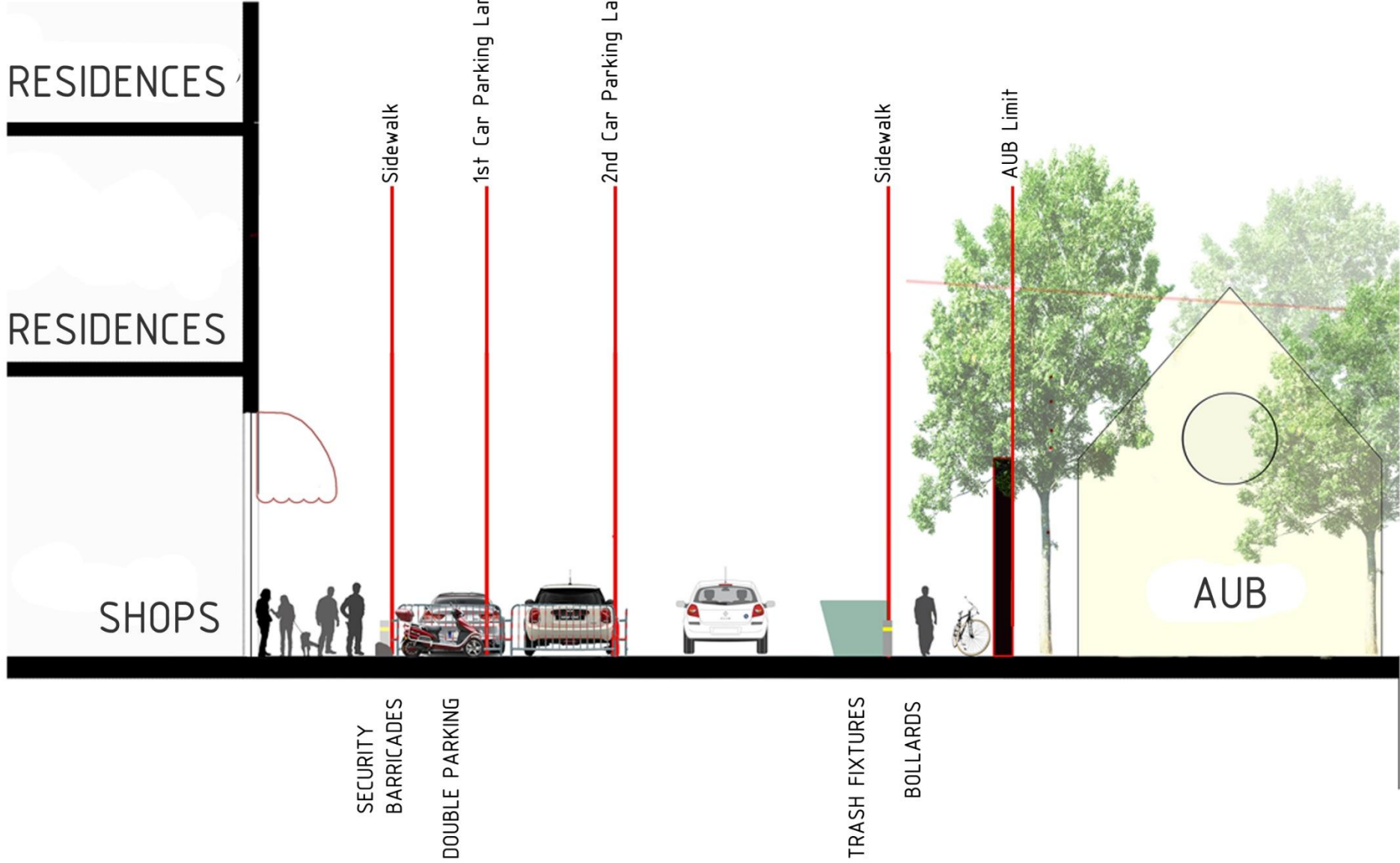


# Hard Intervention: Wall niches ( After)

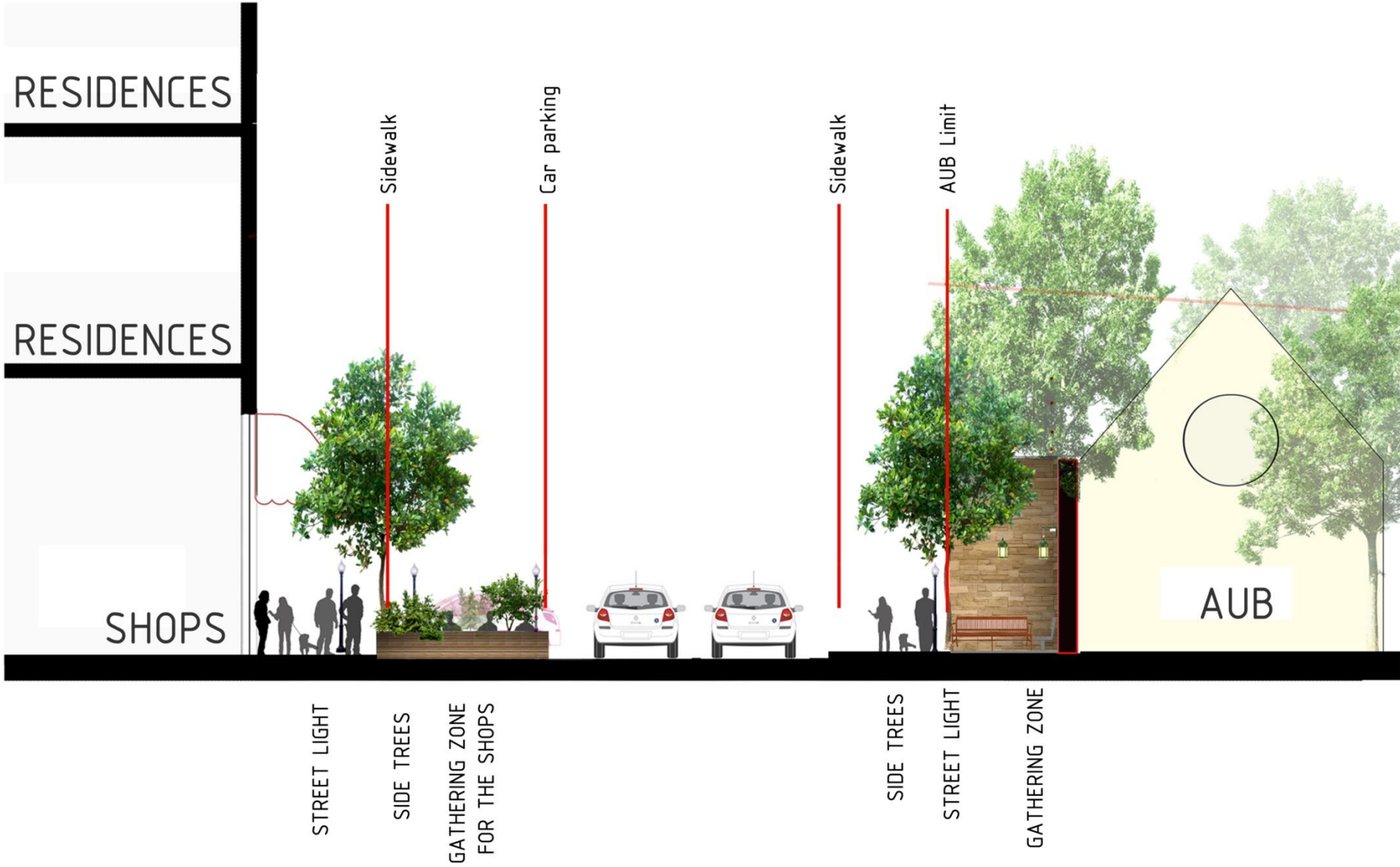


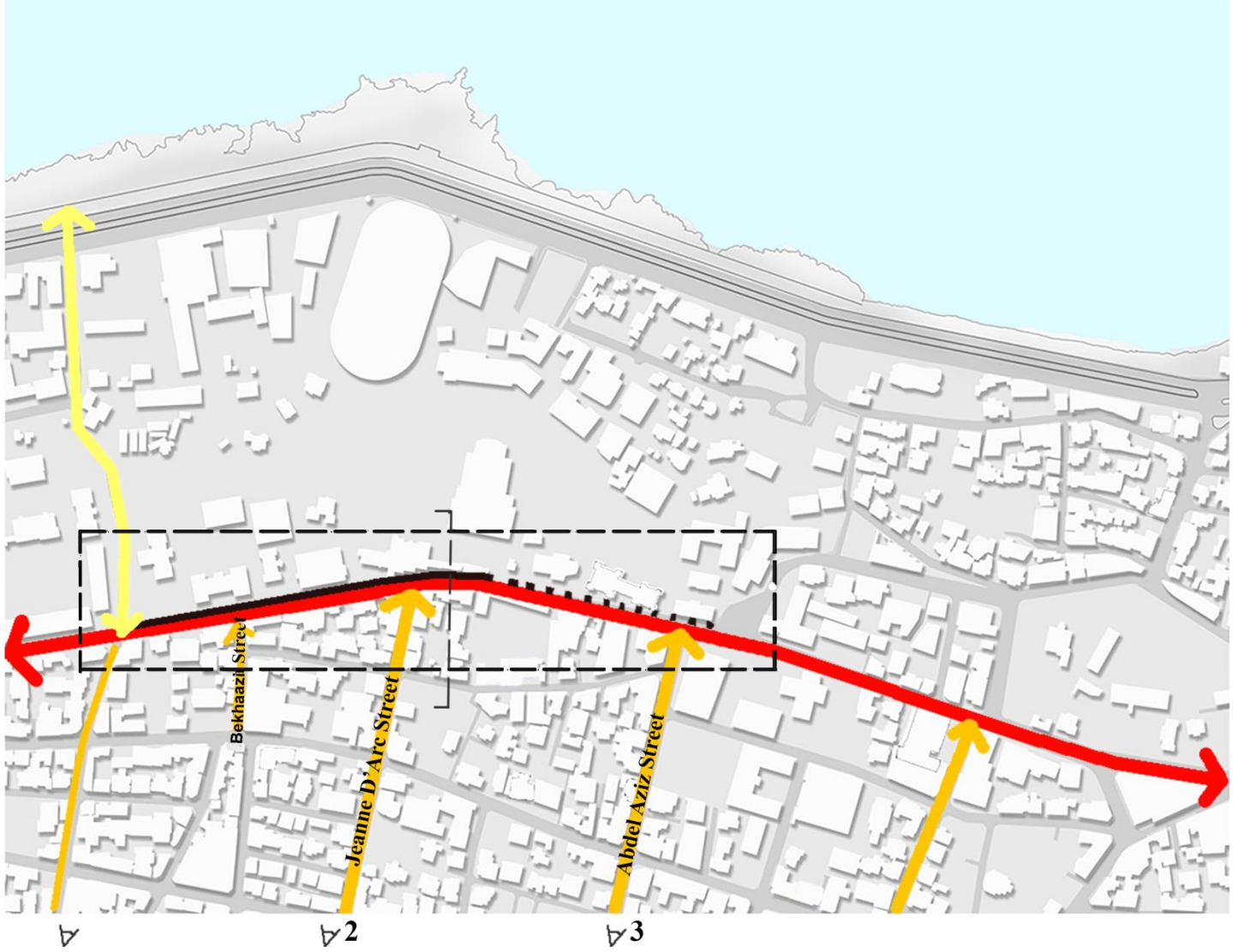


# Proposed section on bliss street

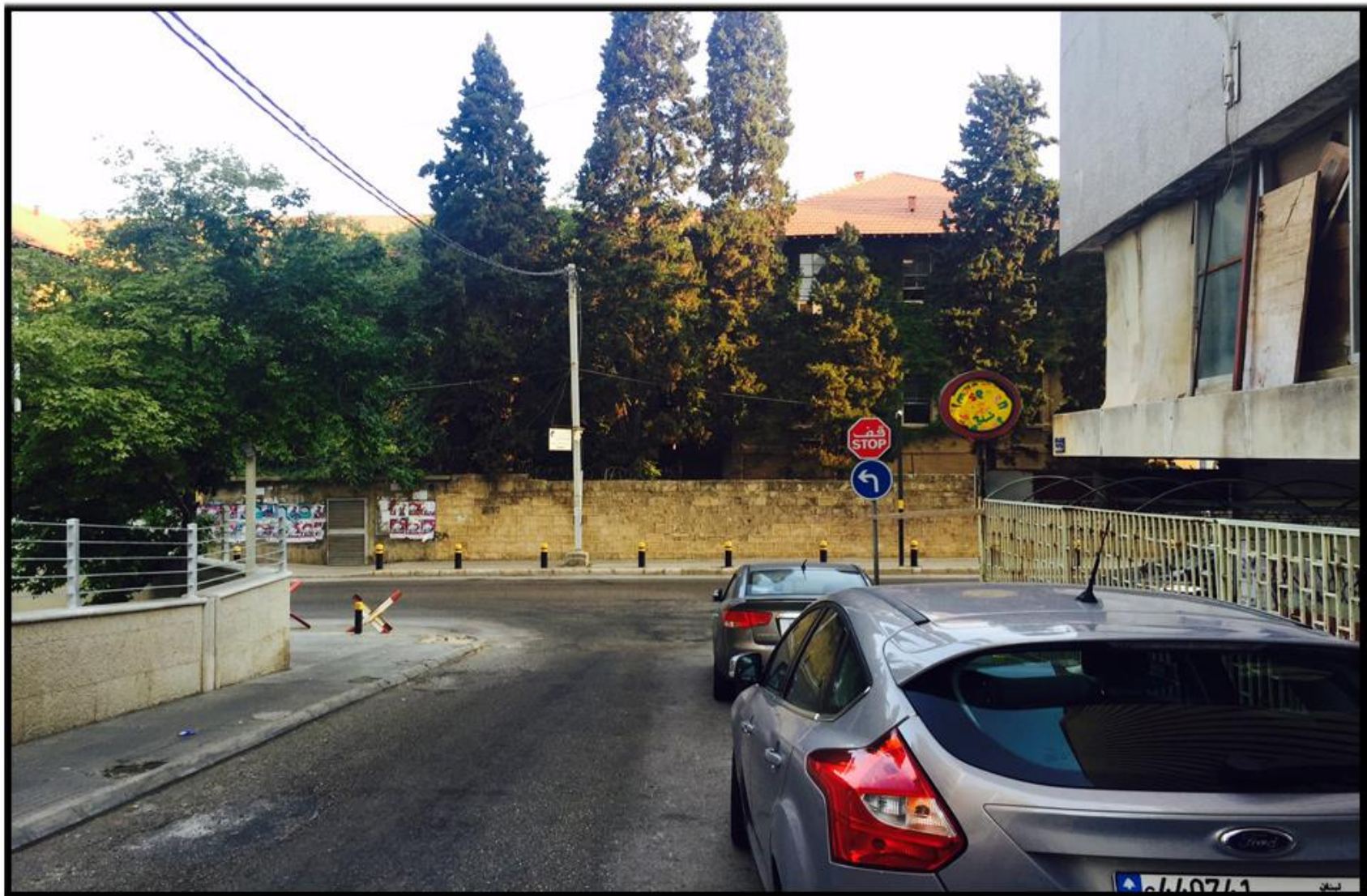


# Proposed section on bliss street

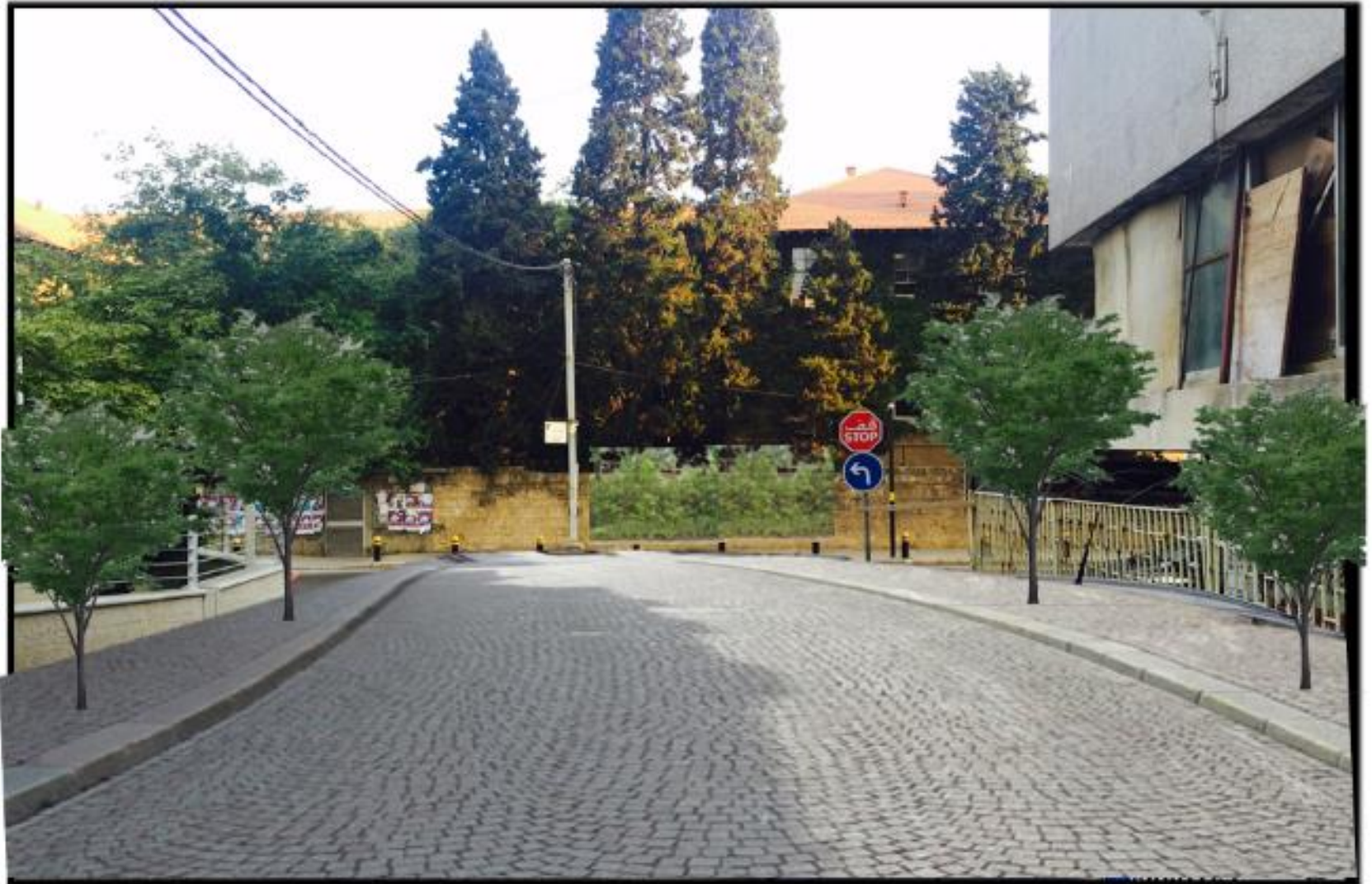




# Bekhazzi Street (Before)



# Bekhazzi Street (After)



# Jeanne d'Arc Street (Before)



# Jeanne d'Arc Street (After)



# Abdel Aziz Street (Before)





# Abdel Aziz Street (After)

