

EPsni 337



AMERICAN UNIVERSITY OF BEIRUT

FACULTY OF ENGINEERING AND ARCHITECTURE

DEPARTMENT OF ARCHITECTURE

COURSE A 592 FINAL PROJECT RESEARCH AND PROGRAMMING

PREPARED AND PRINTED BY MOHAMED SHEBARO

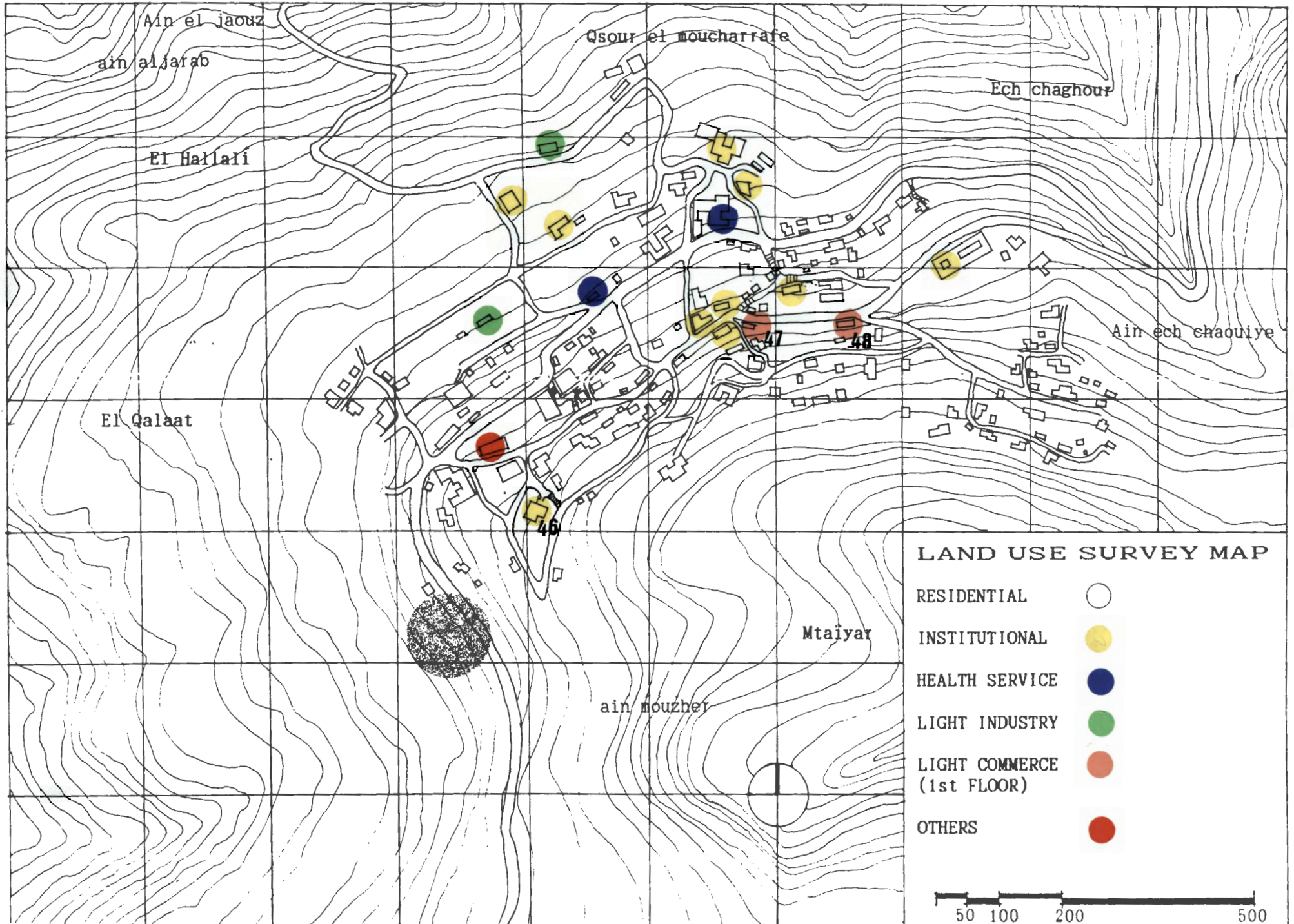
A CHILDREN'S VILLAGE IN ABEY

EPsn
337



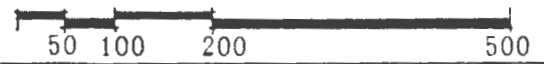
PHOTOGRAPHIC DOCUMENTATION

LOCALITY ANALYSIS : ABEY

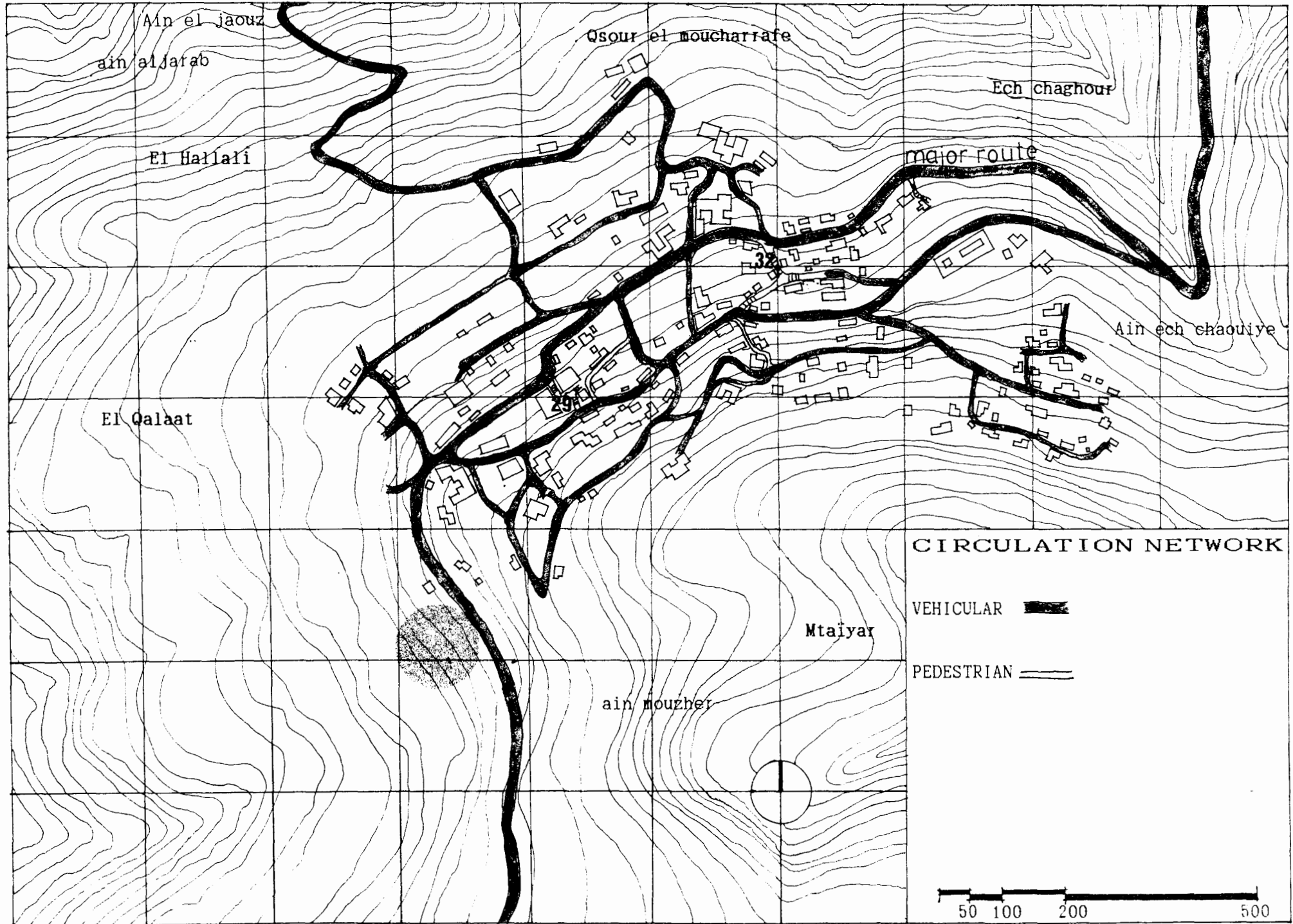


LAND USE SURVEY MAP

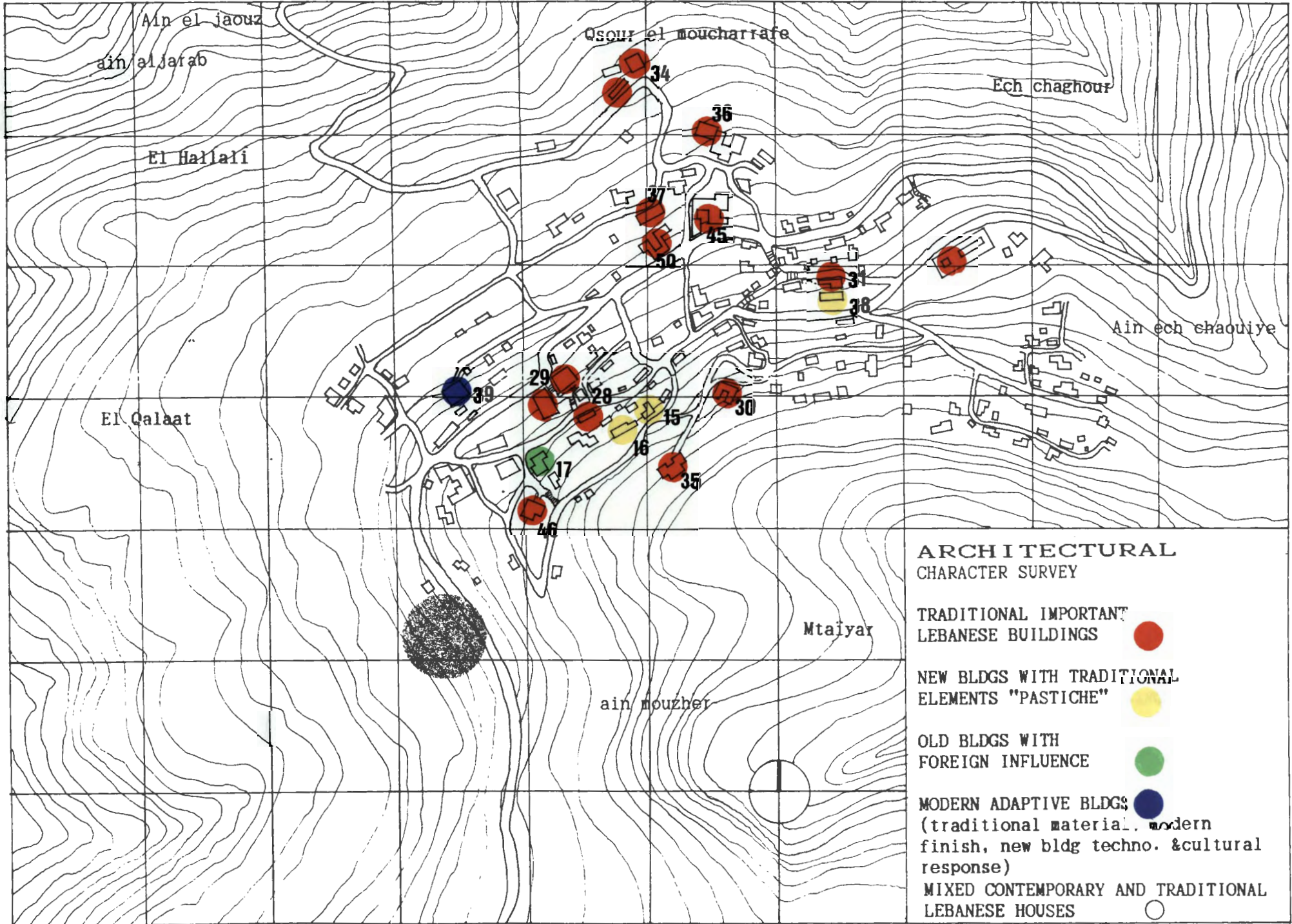
- RESIDENTIAL
- INSTITUTIONAL
- HEALTH SERVICE
- LIGHT INDUSTRY
- LIGHT COMMERCE (1st FLOOR)
- OTHERS



LOCALITY ANALYSIS : ABEY



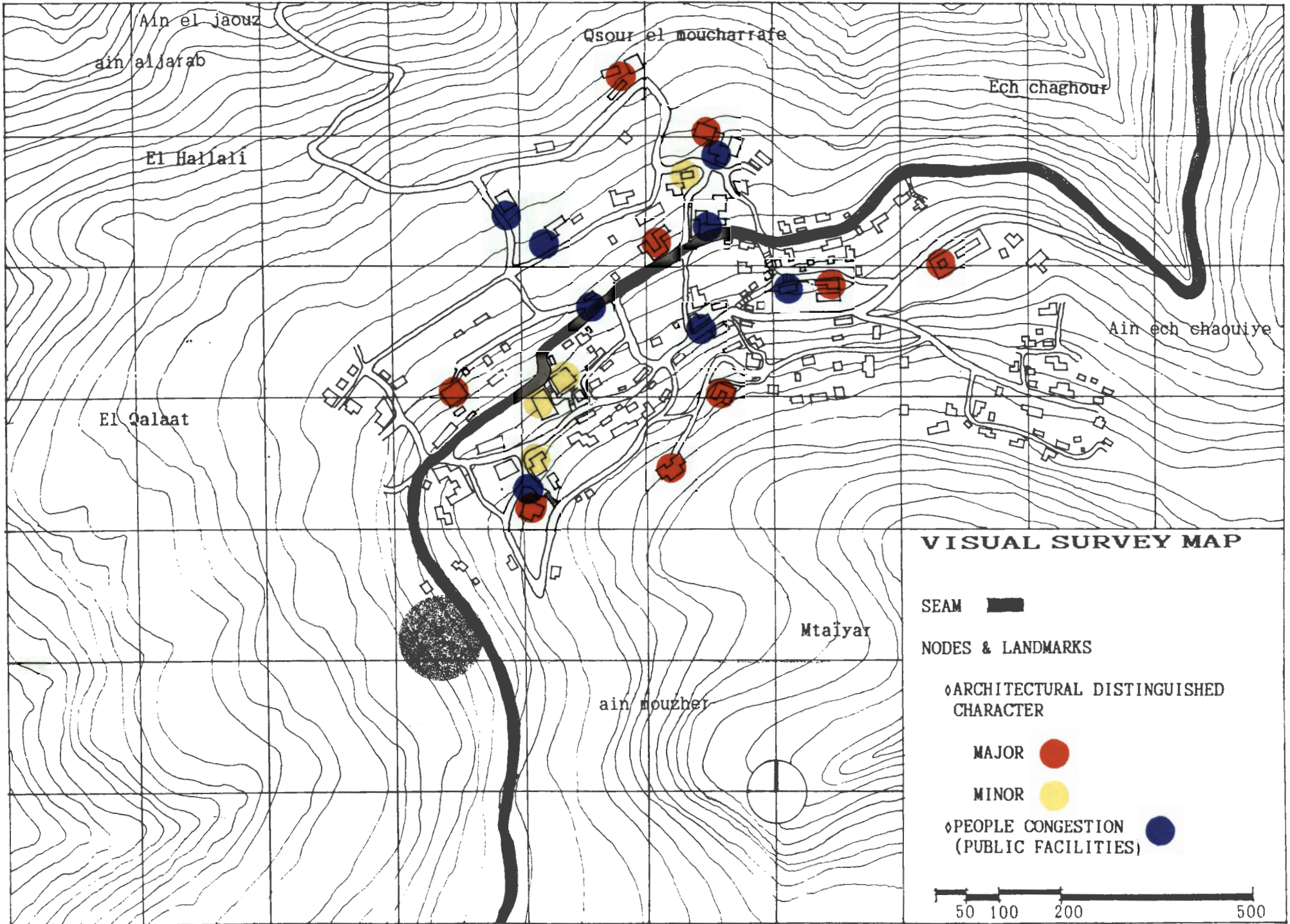
LOCALITY ANALYSIS : ABEY



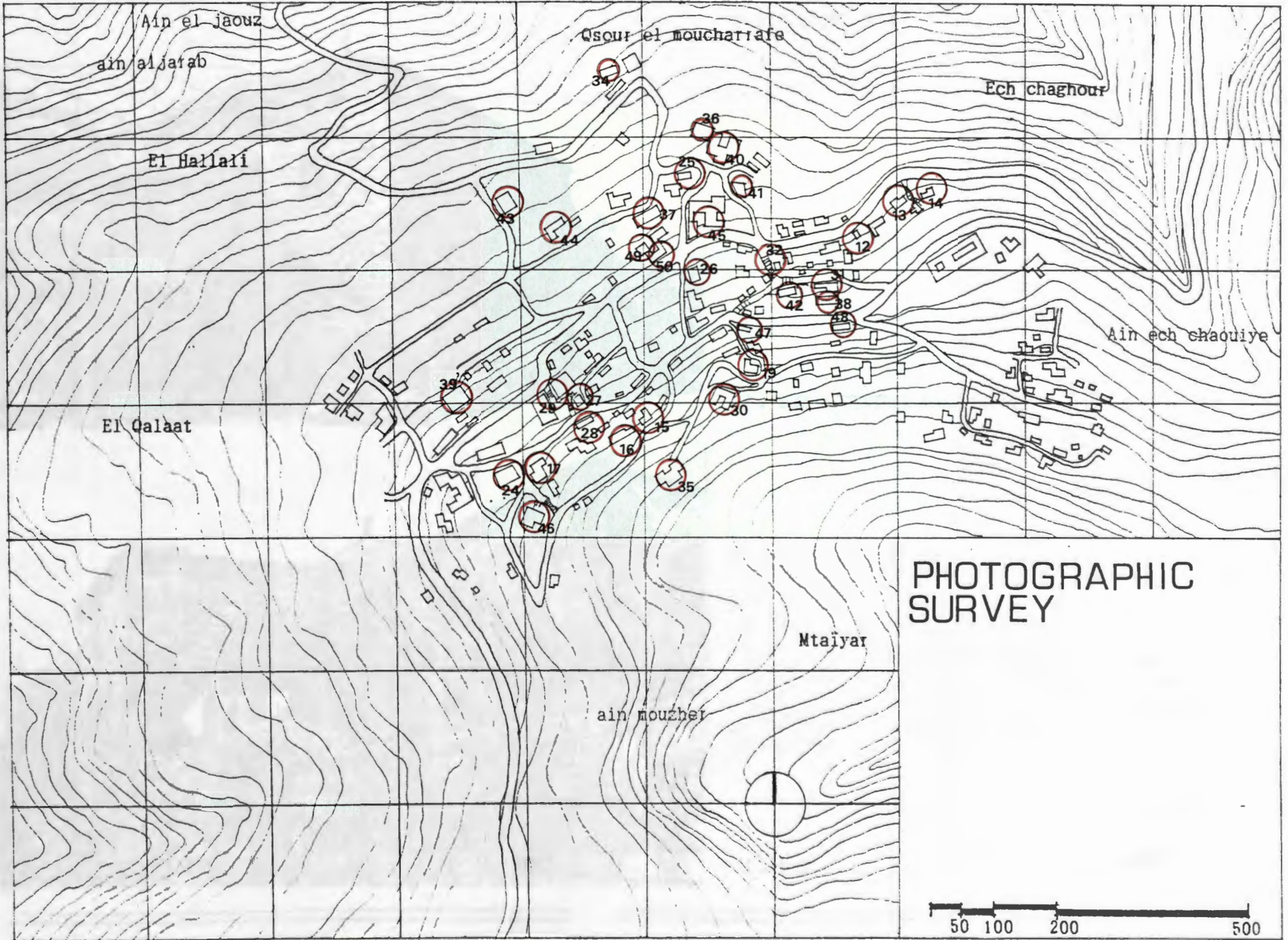
ARCHITECTURAL CHARACTER SURVEY

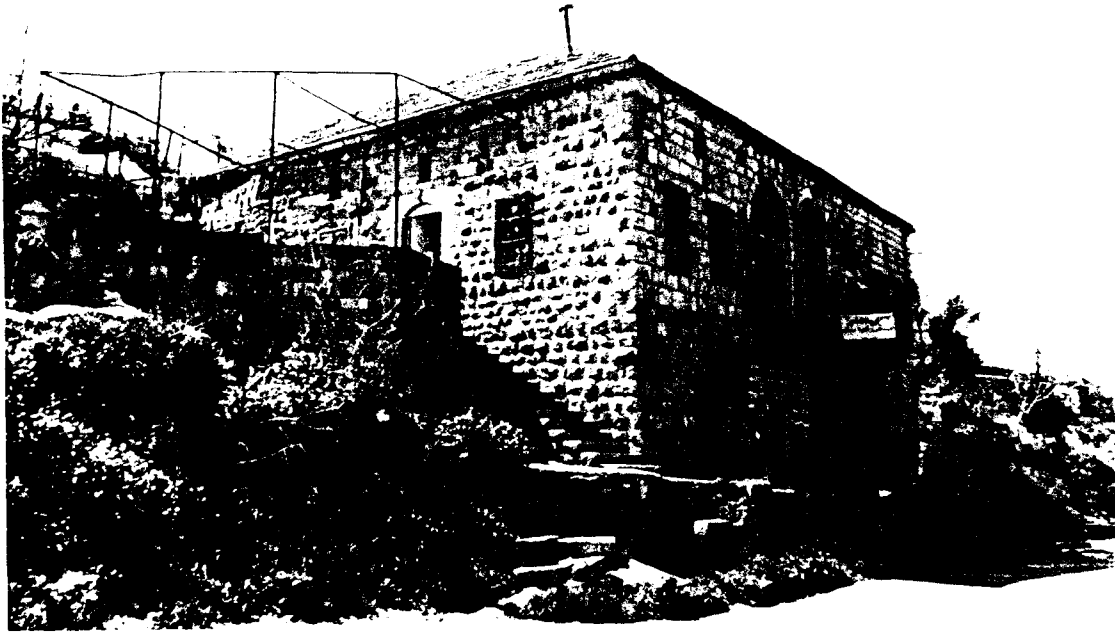
- TRADITIONAL IMPORTANT LEBANESE BUILDINGS ●
- NEW BLDGS WITH TRADITIONAL ELEMENTS "PASTICHE" ●
- OLD BLDGS WITH FOREIGN INFLUENCE ●
- MODERN ADAPTIVE BLDGS (traditional material, modern finish, new bldg techno. & cultural response) ●
- MIXED CONTEMPORARY AND TRADITIONAL LEBANESE HOUSES ○

LOCALITY ANALYSIS : ABEY

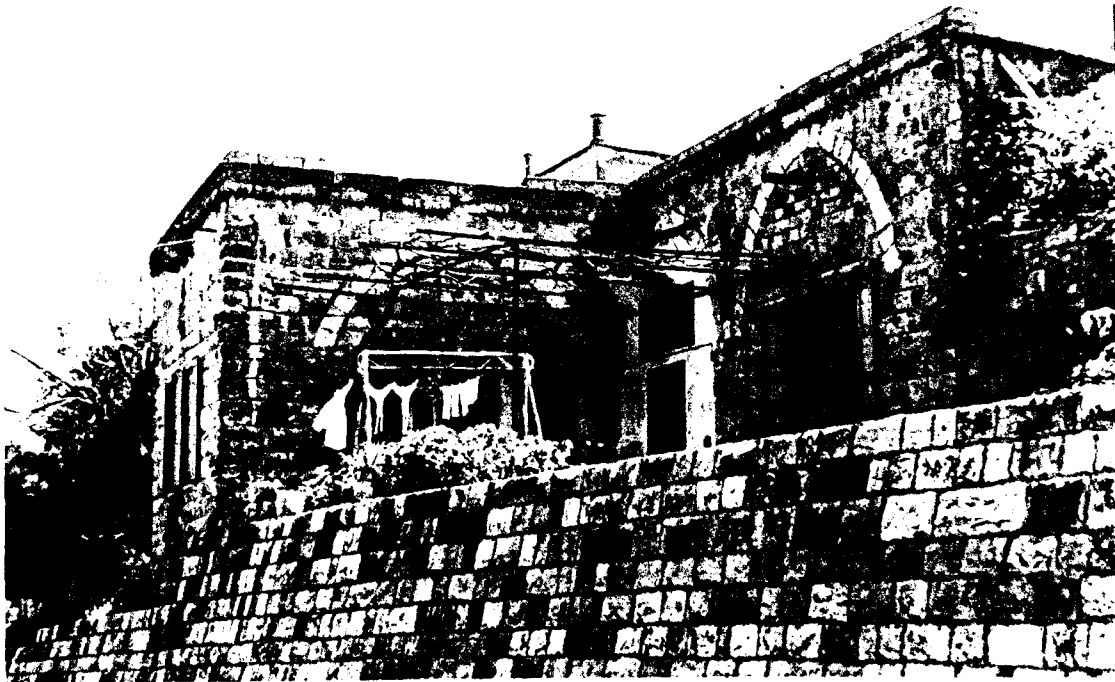


LOCALITY ANALYSIS : ABEY

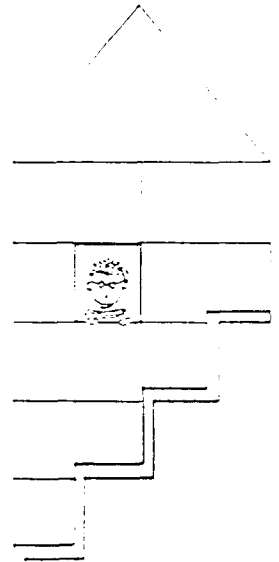


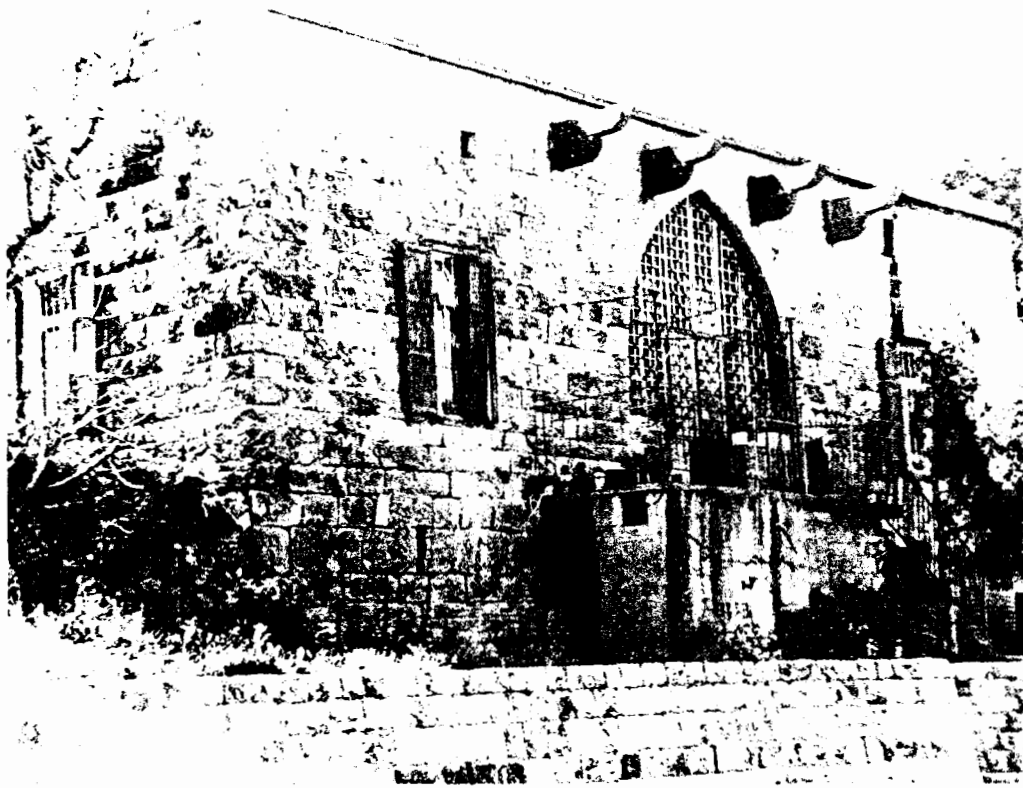


V. 12 A CENTRAL HALL HOUSE

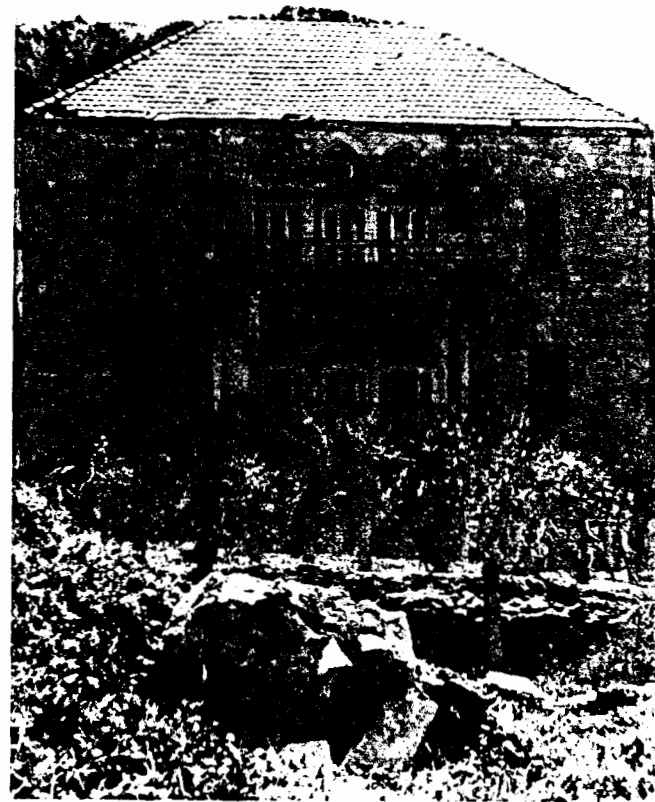


V. 13

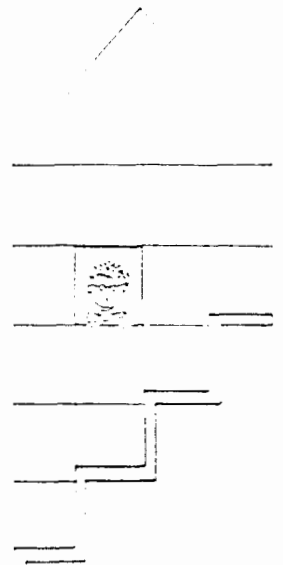


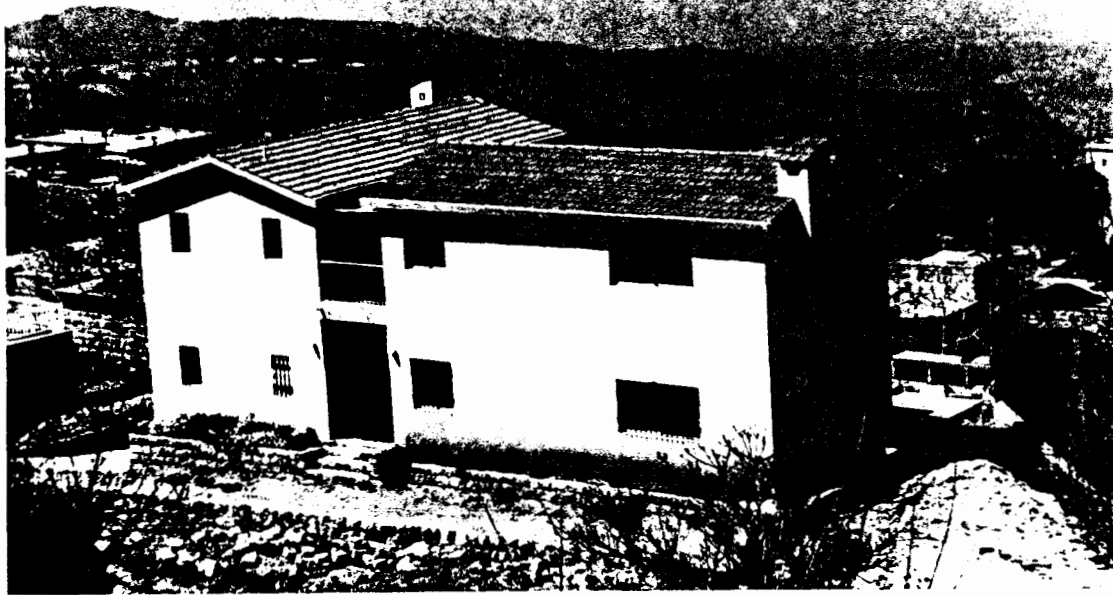


V. 14 A LIWAN HOUSE: unfortunatly
with a newly glazed central space.

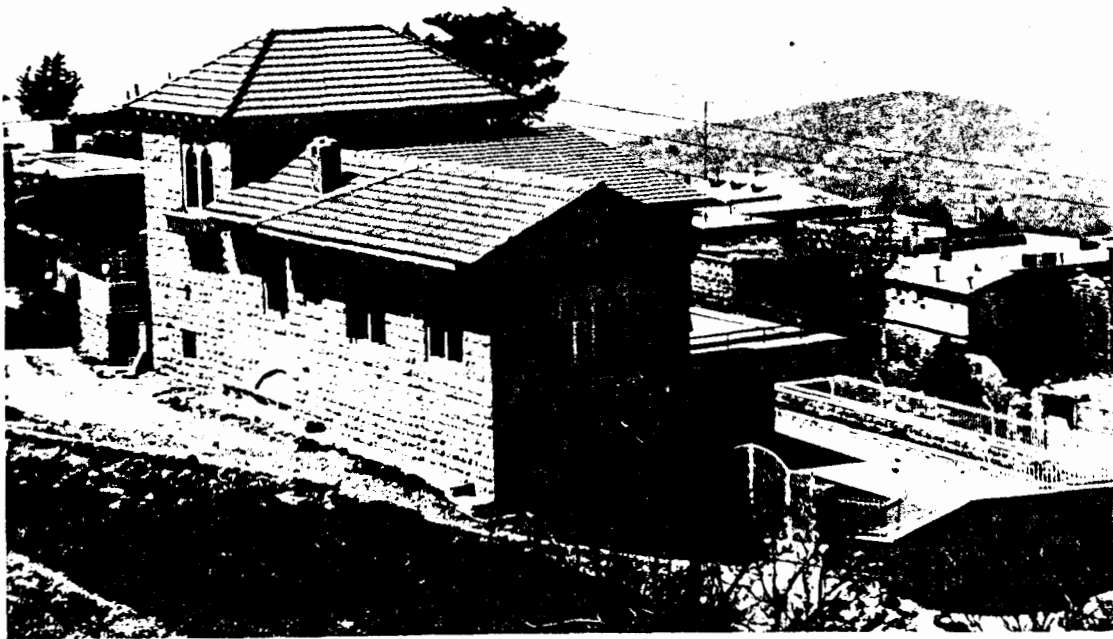


A CENTRAL HALL HOUSE

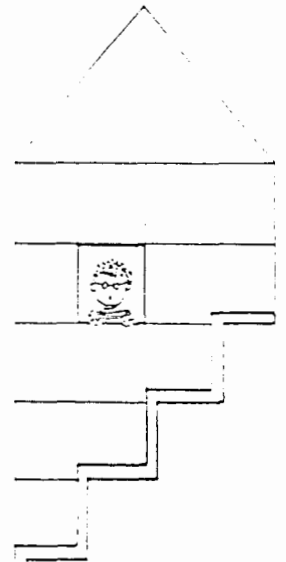




V. 15

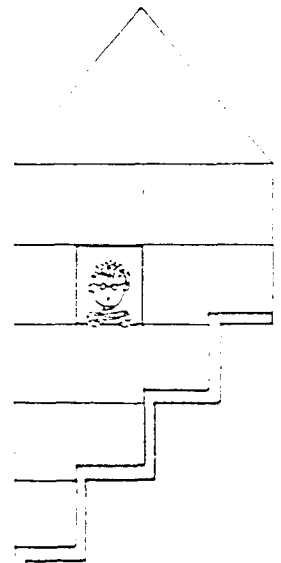


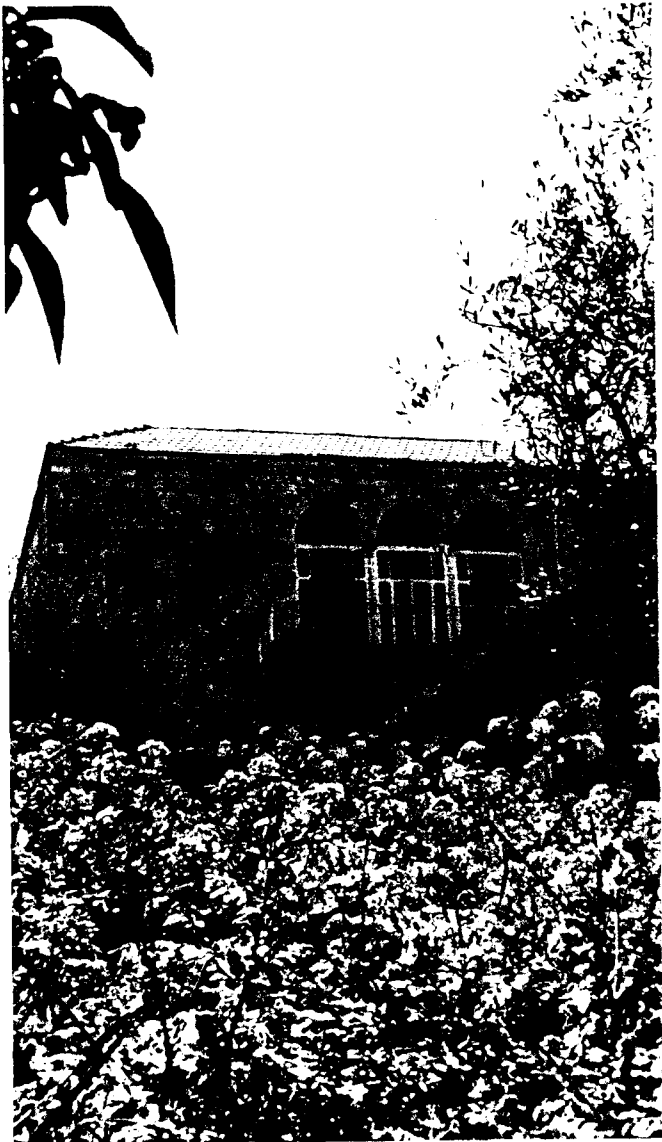
V. 16



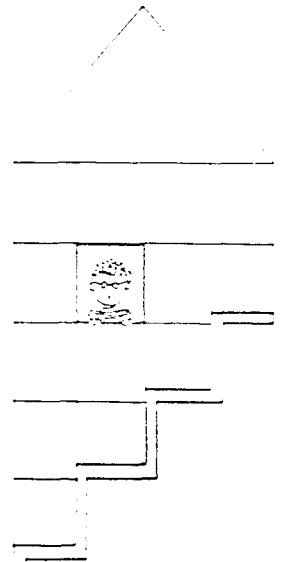


V. 17



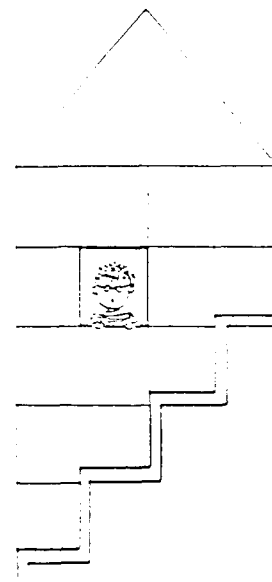


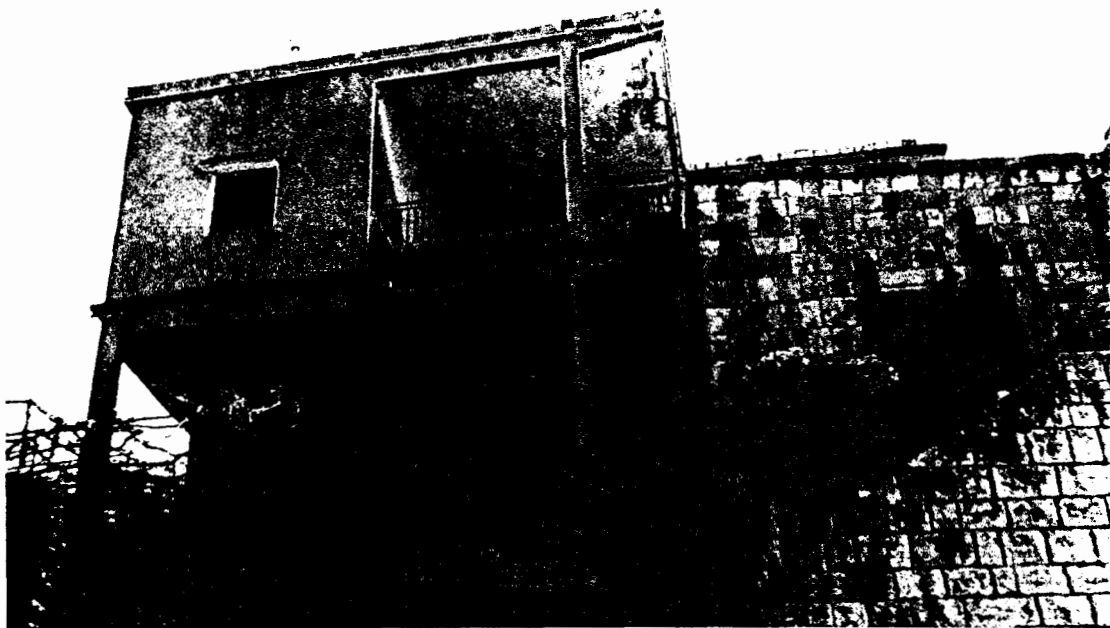
V. 18





V. 19





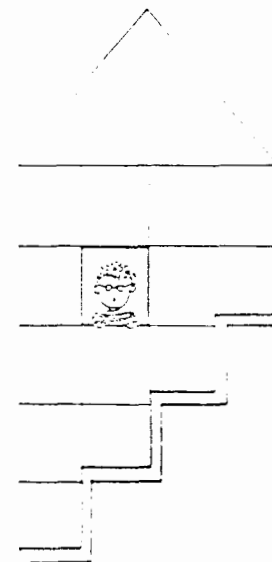
V. 20

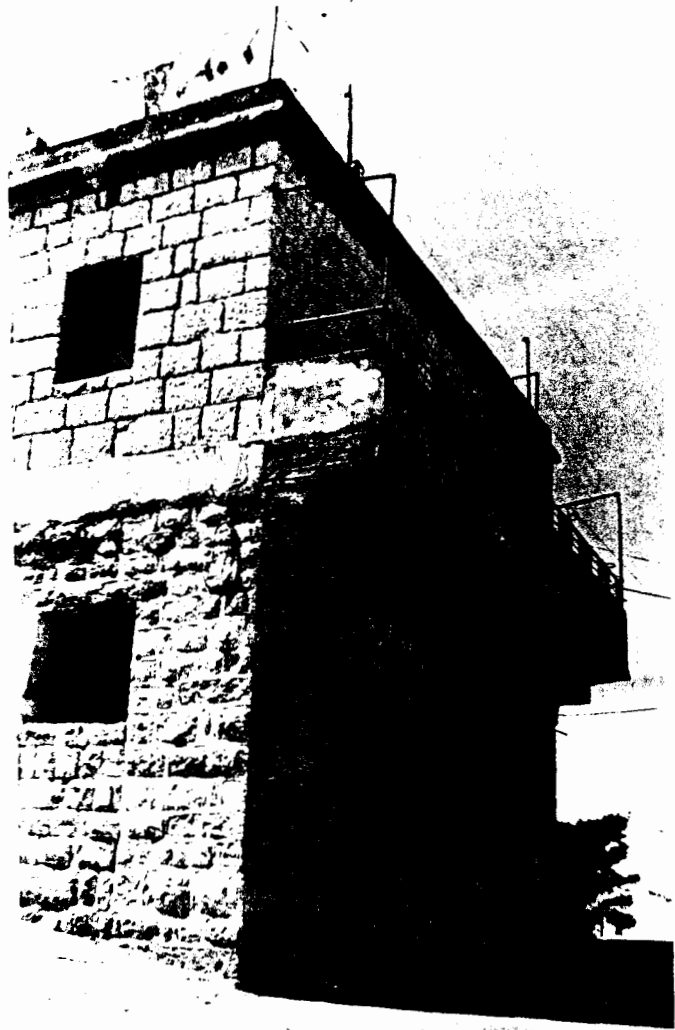
A TRADITIONAL HOUSE WITH A NEW ADDITION TO IT.



V. 21

A RECTANGULAR HOUSE IN RUINS

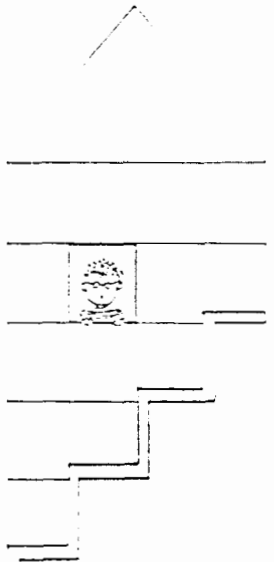


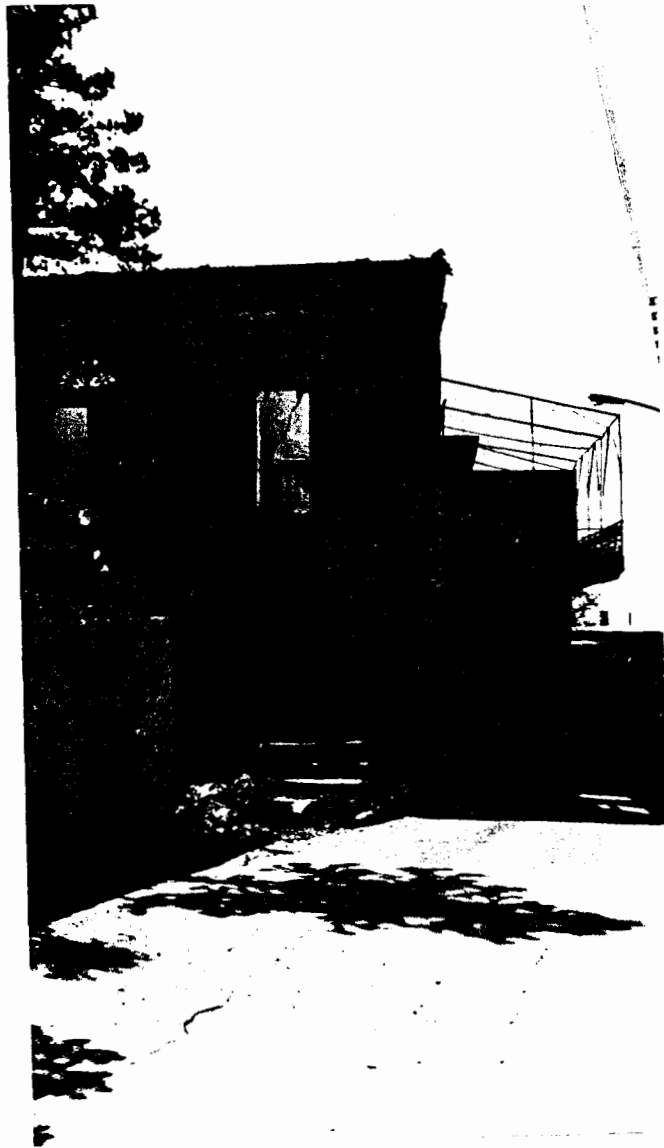


V. 22

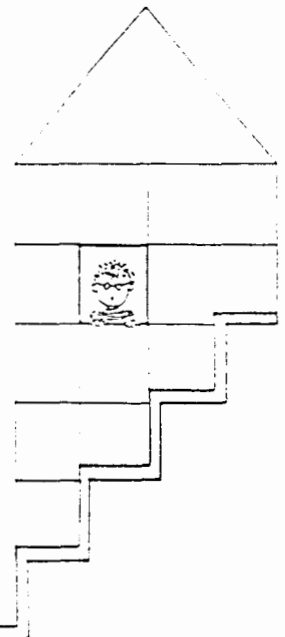


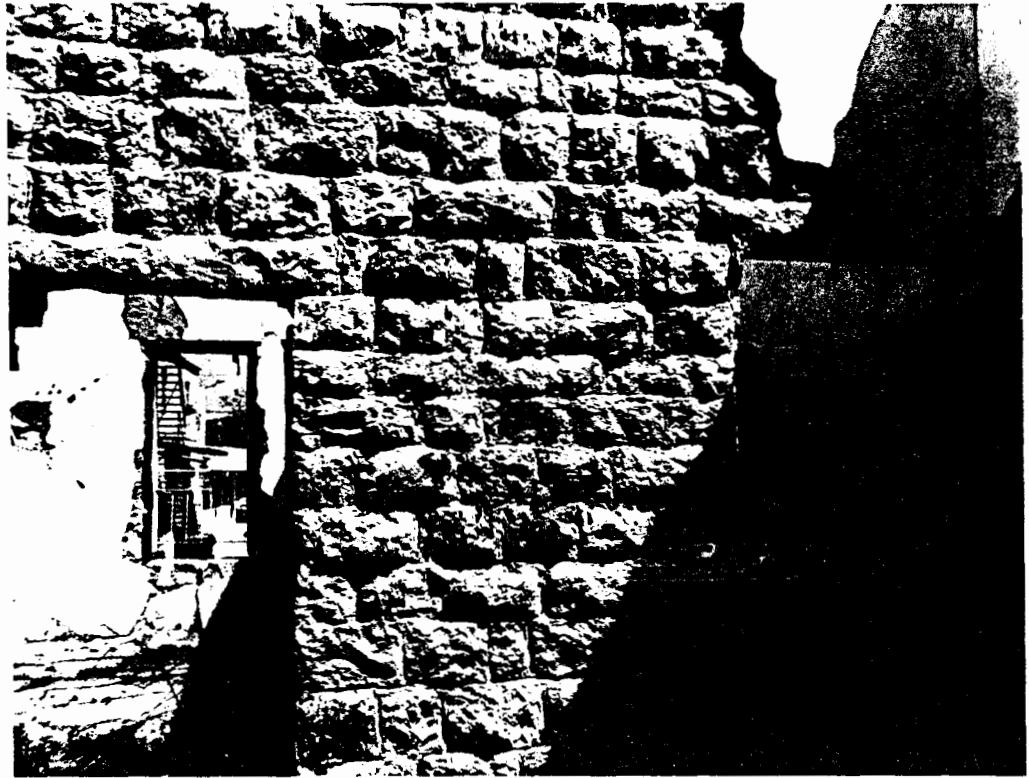
V. 23



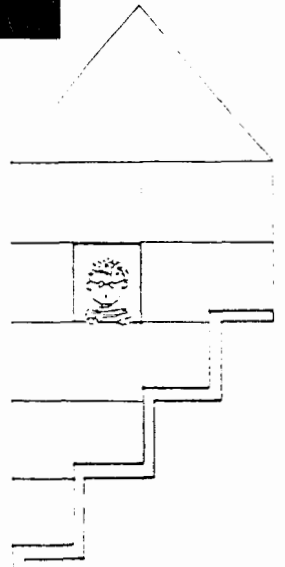


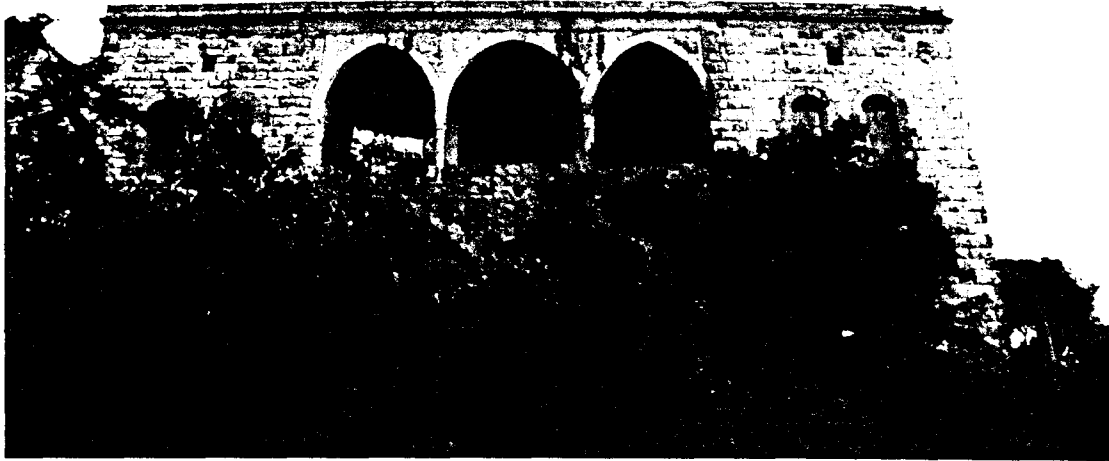
A CENTRAL HALL HOUSE BUILT
BETWEEN 1918 & 1944 V. 24





THE CENTRAL HALL

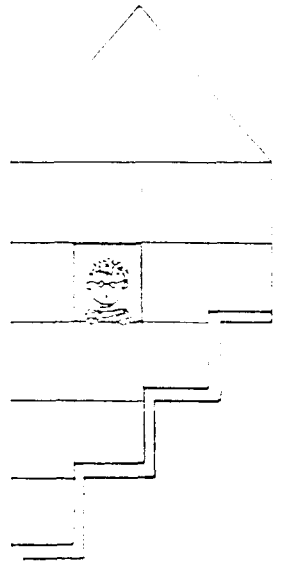


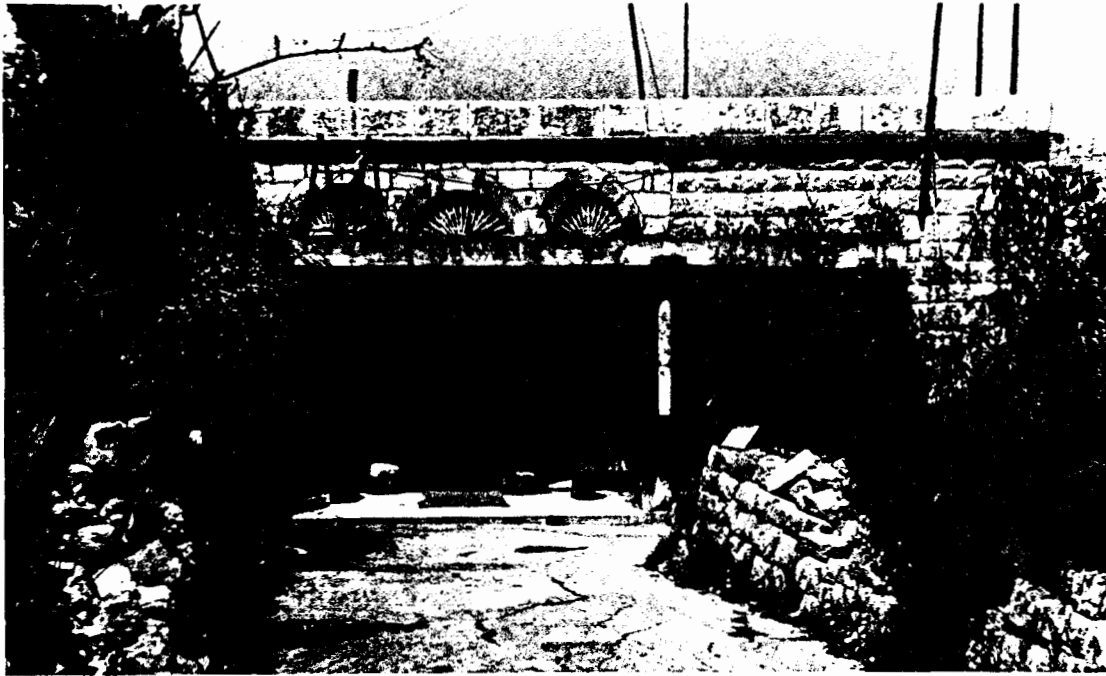


V. 25
"BAYT KANAAN"

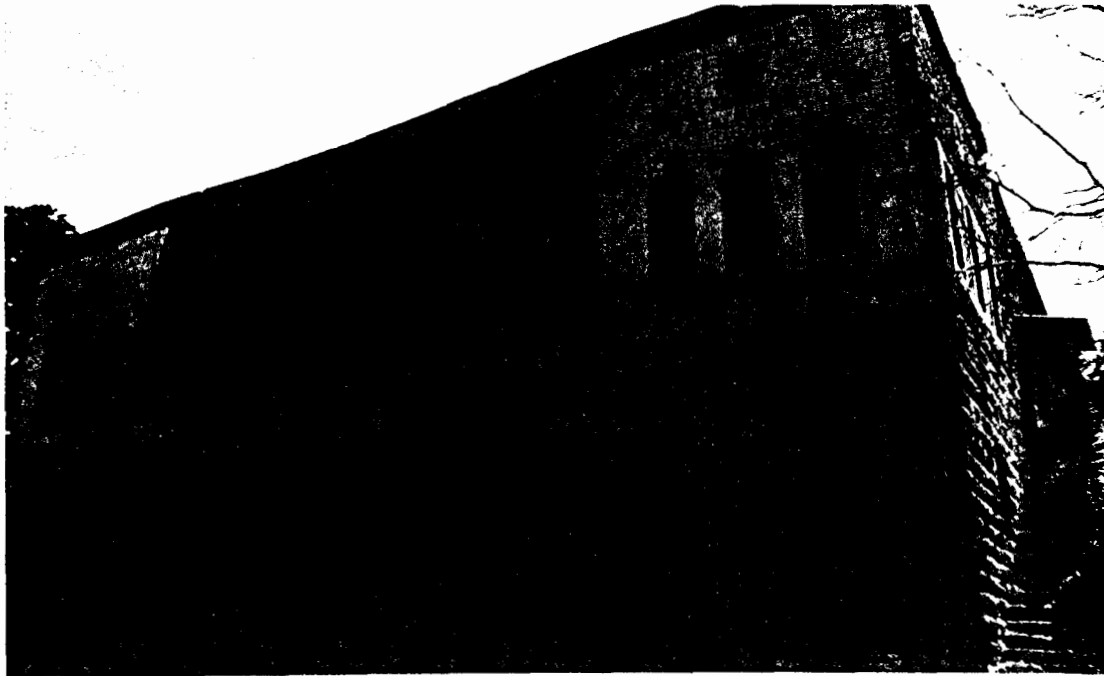


V. 26
"ELSAIDE" CHURCH"

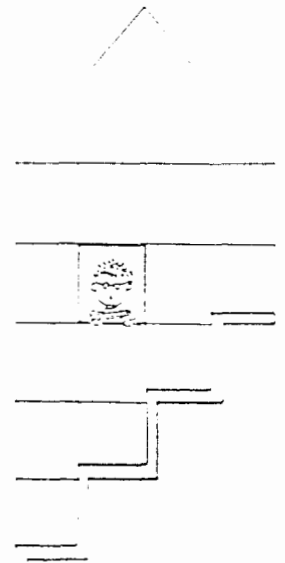


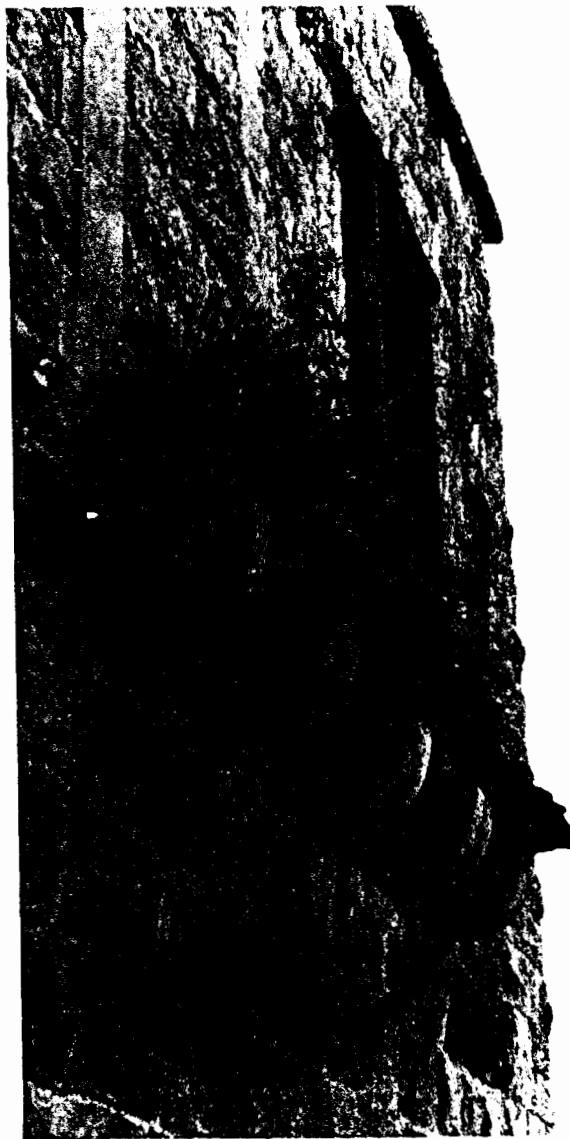


V. 27

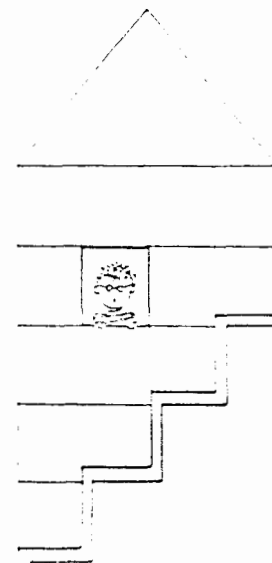


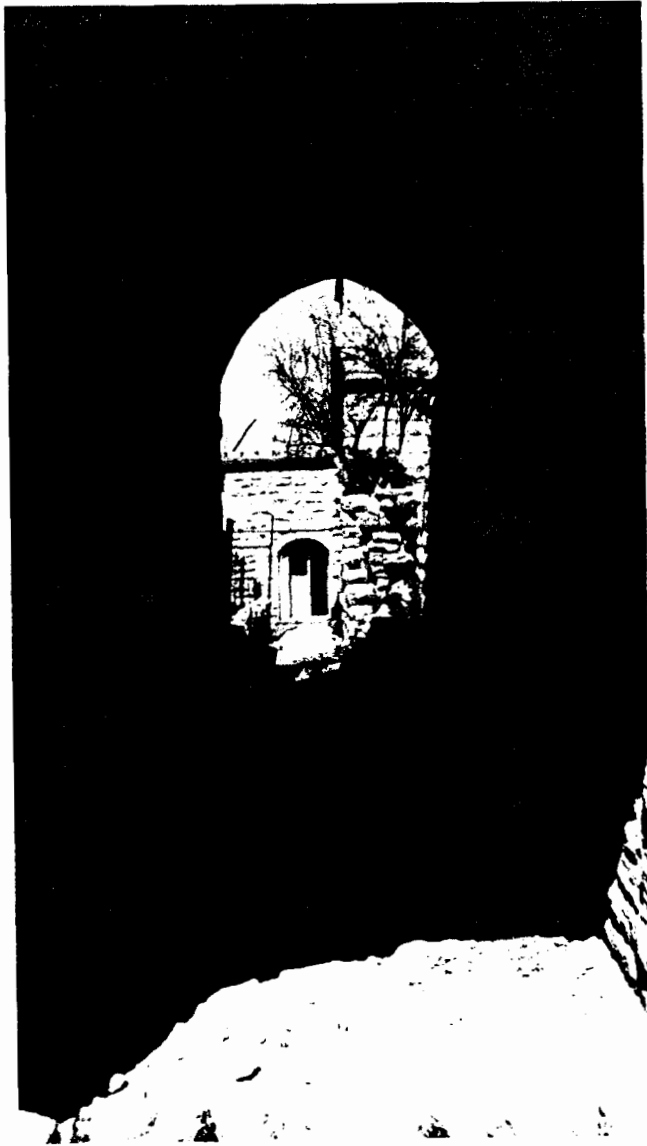
V. 28



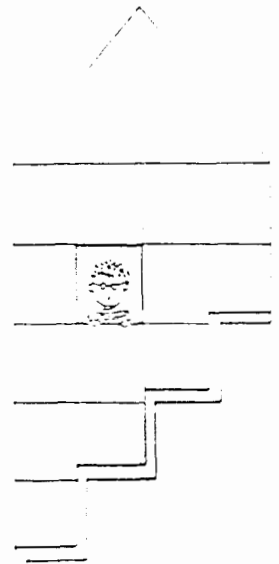
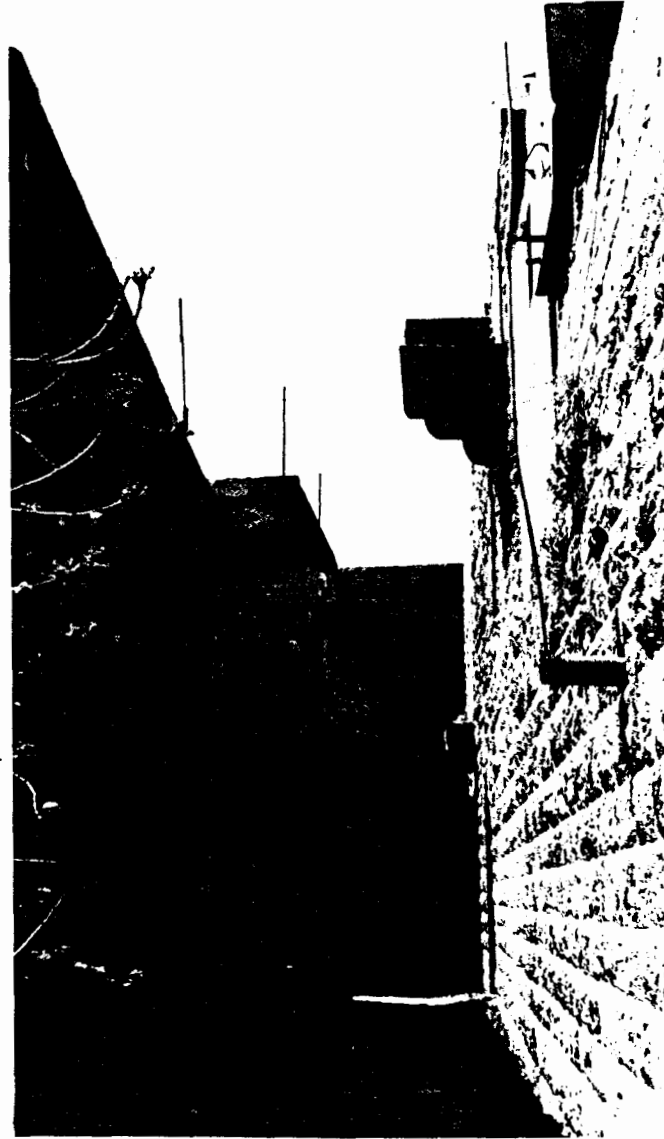


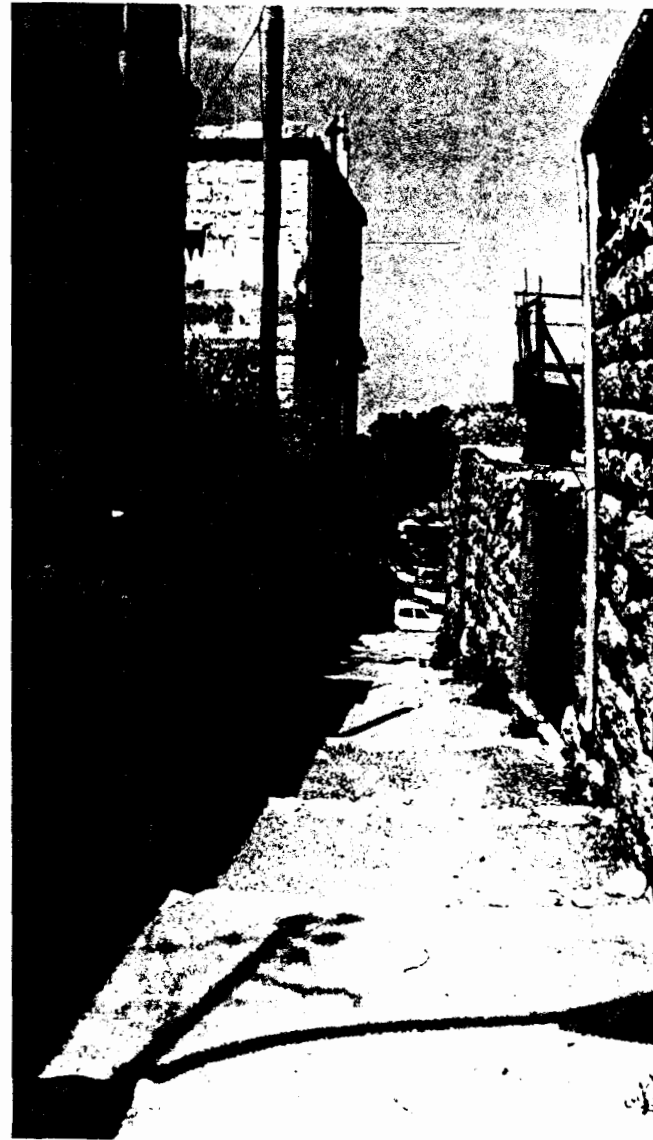
V. 29



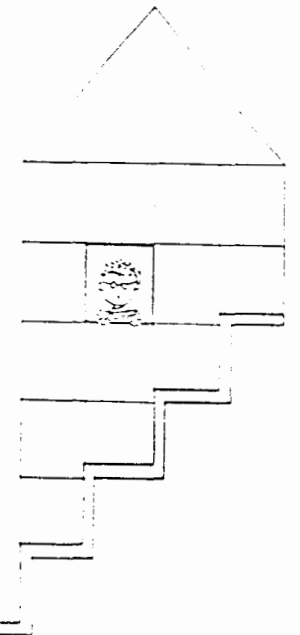


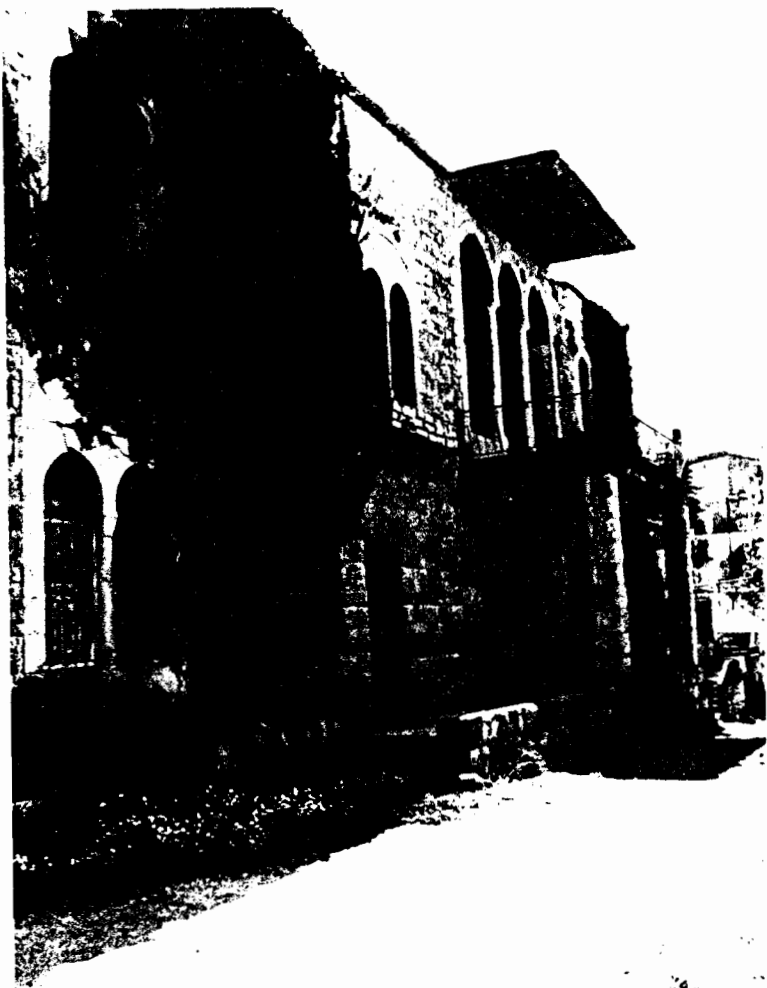
A HOUSE THROUGH A BUILDING



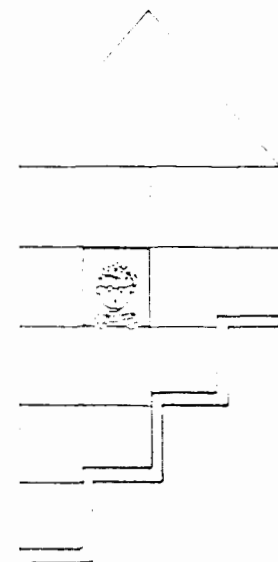


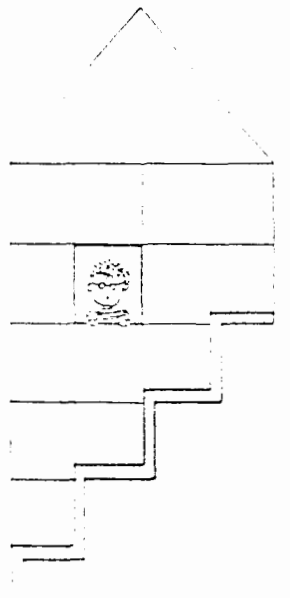
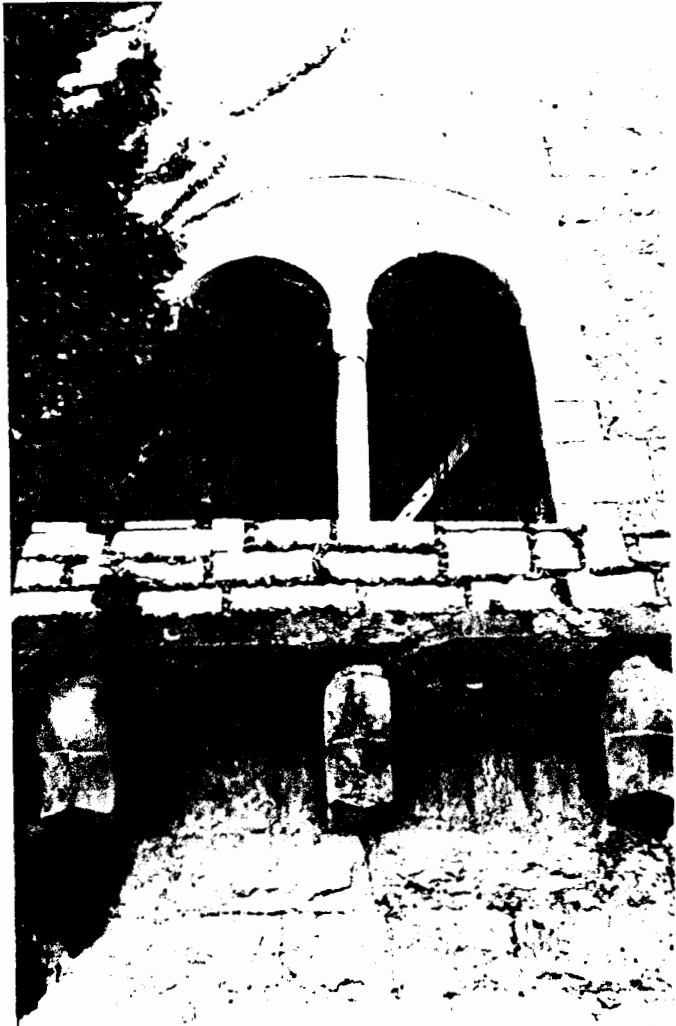
A WALL FORCED WITHIN BEAUTIFUL ARCADES

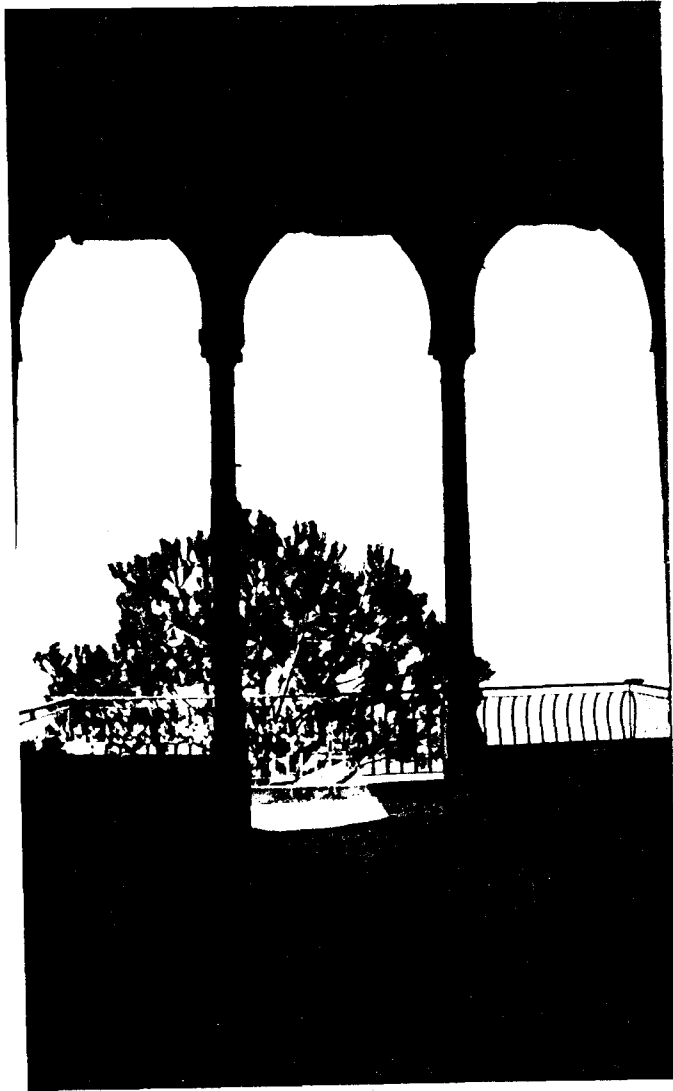




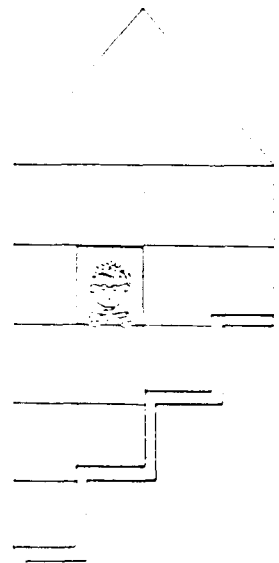
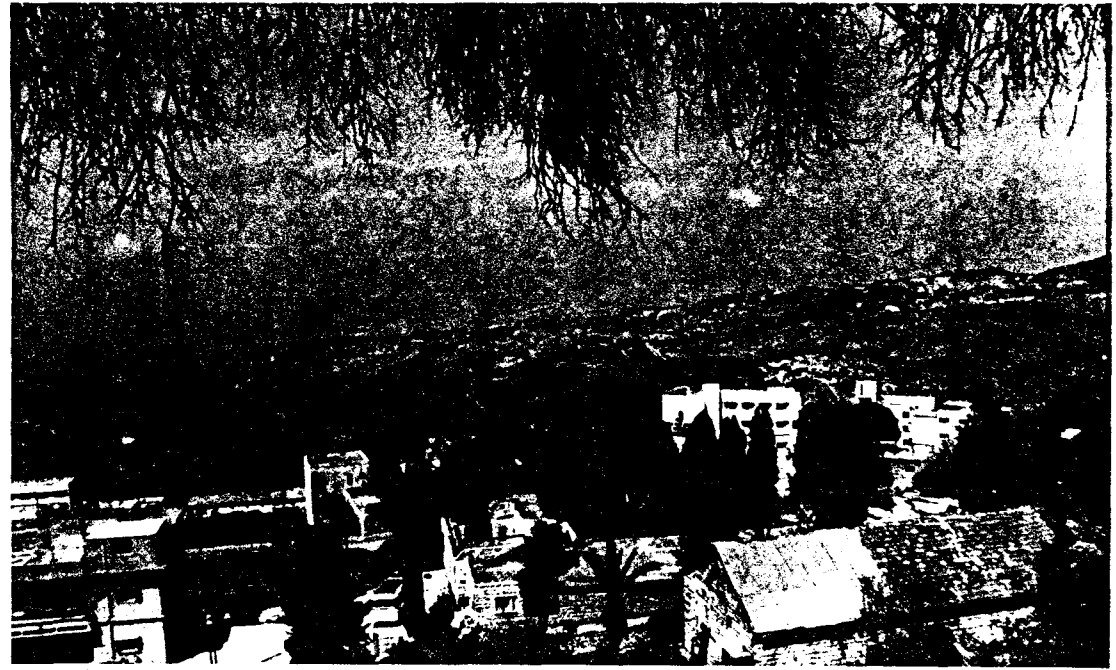
"BAYT AMIN EDDINE" V. 30







INSIDE-OUT

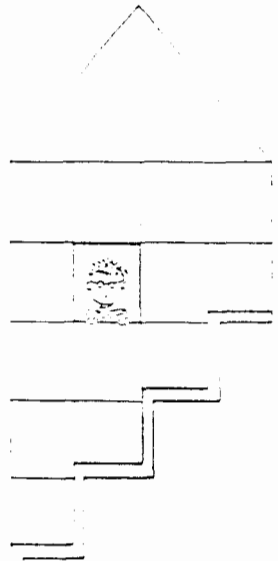




1st FLOOR'S BARREL VAULTS



BACK FACADE

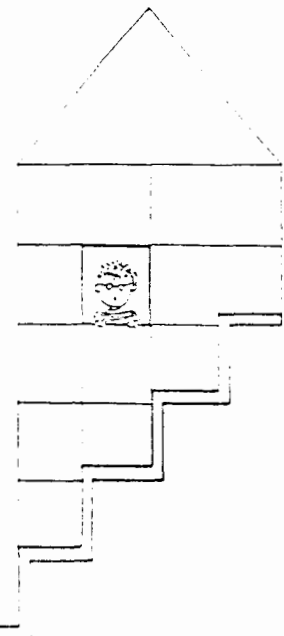


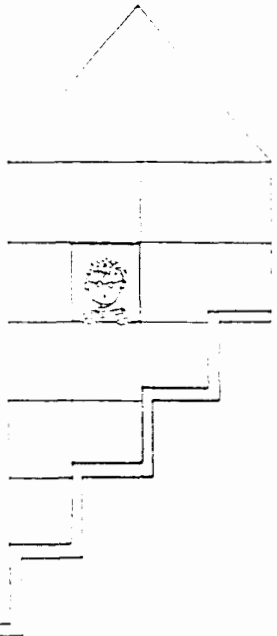
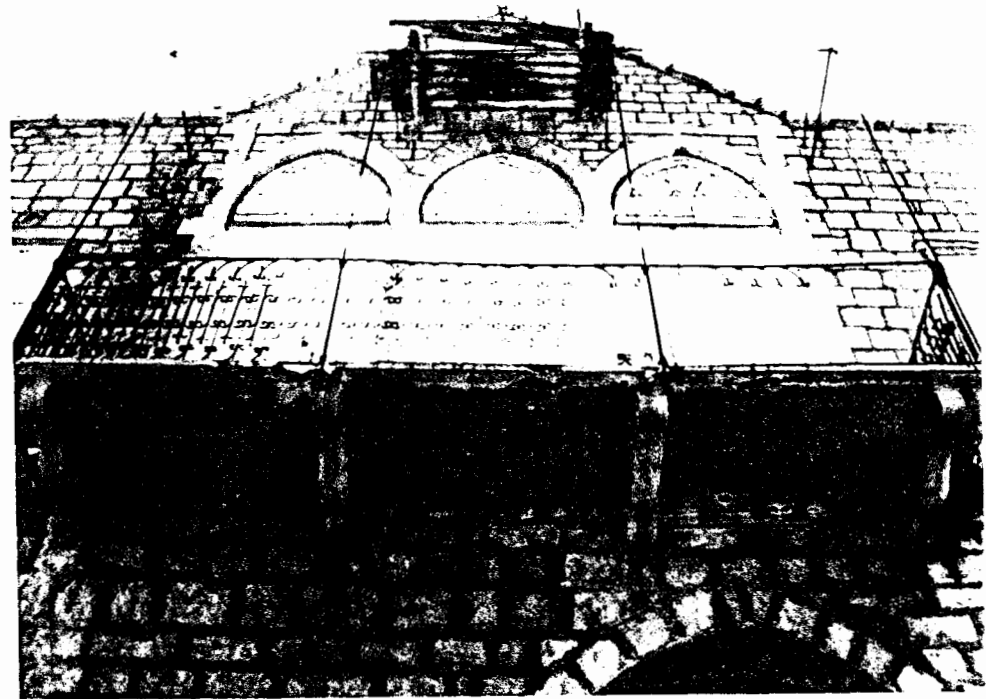


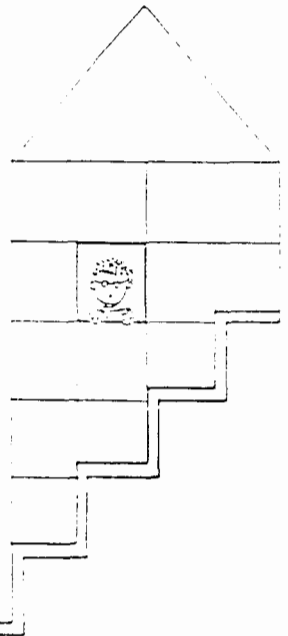
V. 31 "AMINE EDDINE"

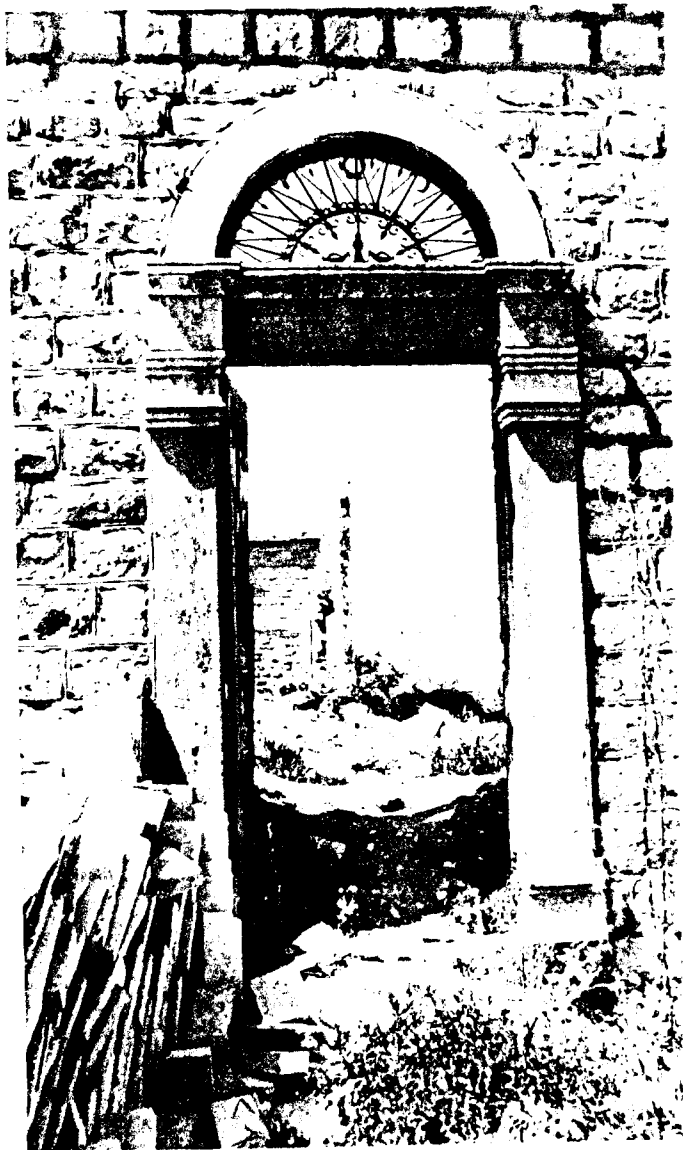


AN IMPOSING FACADE





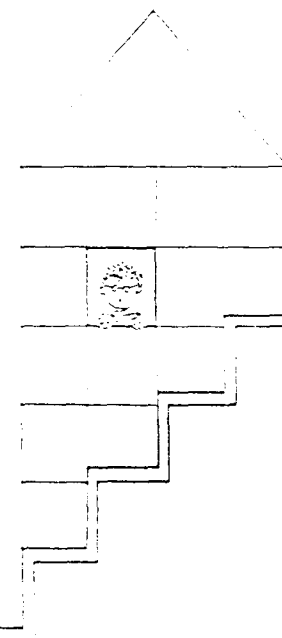




ENTRANCE DOORWAY

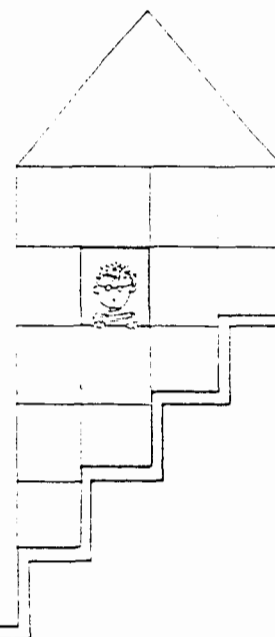


INTERIOR DOORWAY



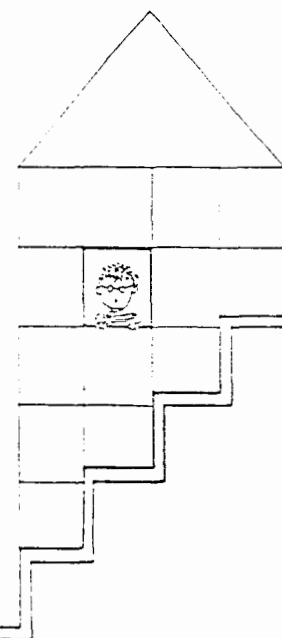


CONSTRUCTION





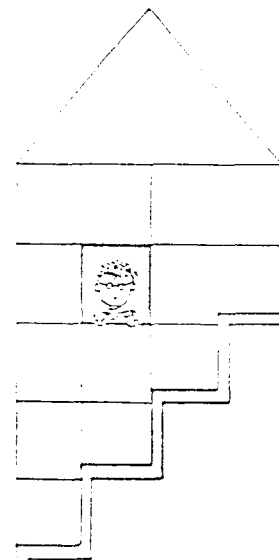
V . 3 2 PEDESTRIAN'S ("ZAROUB")





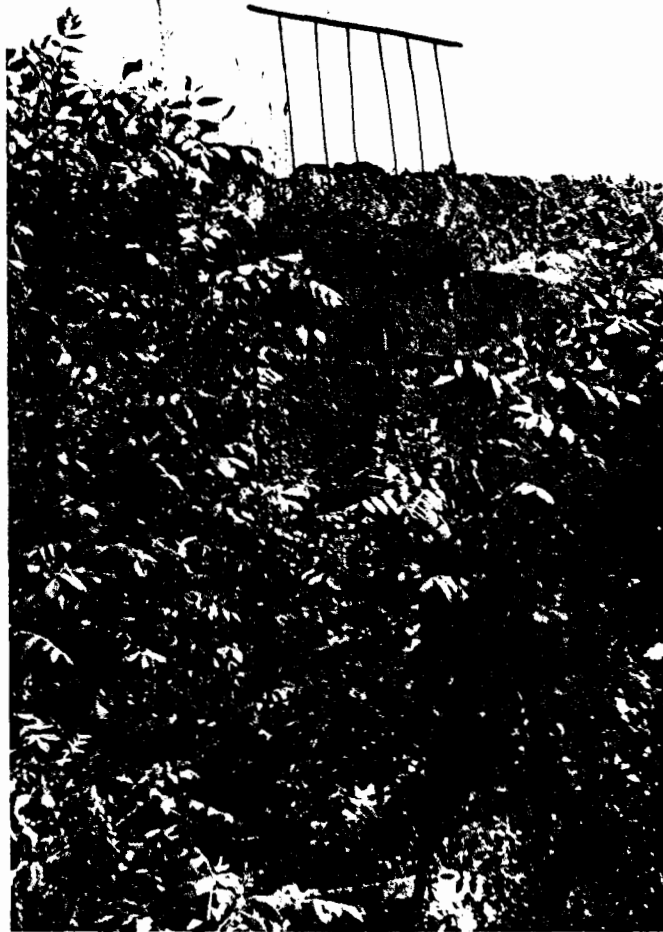
V. 33

"ELKOSSOUR ELMSHARRAFA", a number of massive buildings scattered on one of the most beautiful sites of ABEY.

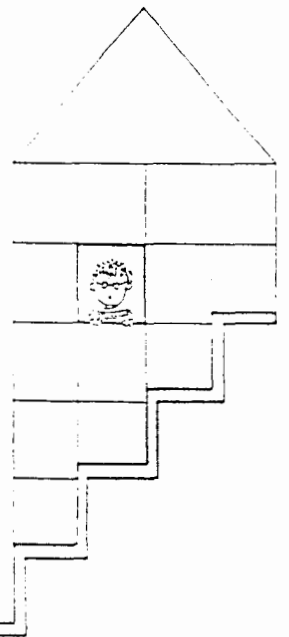




NOT JUST RUINS

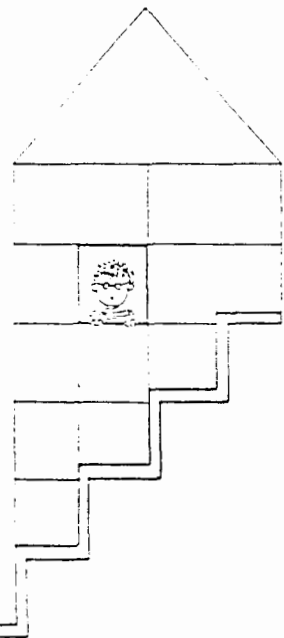
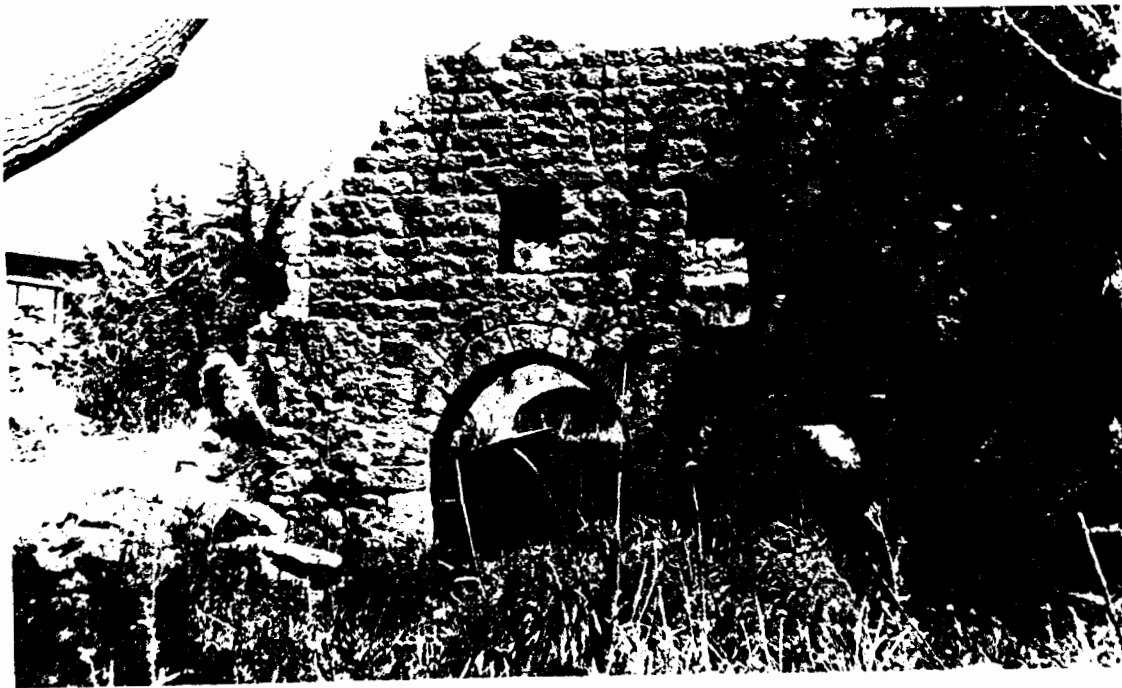


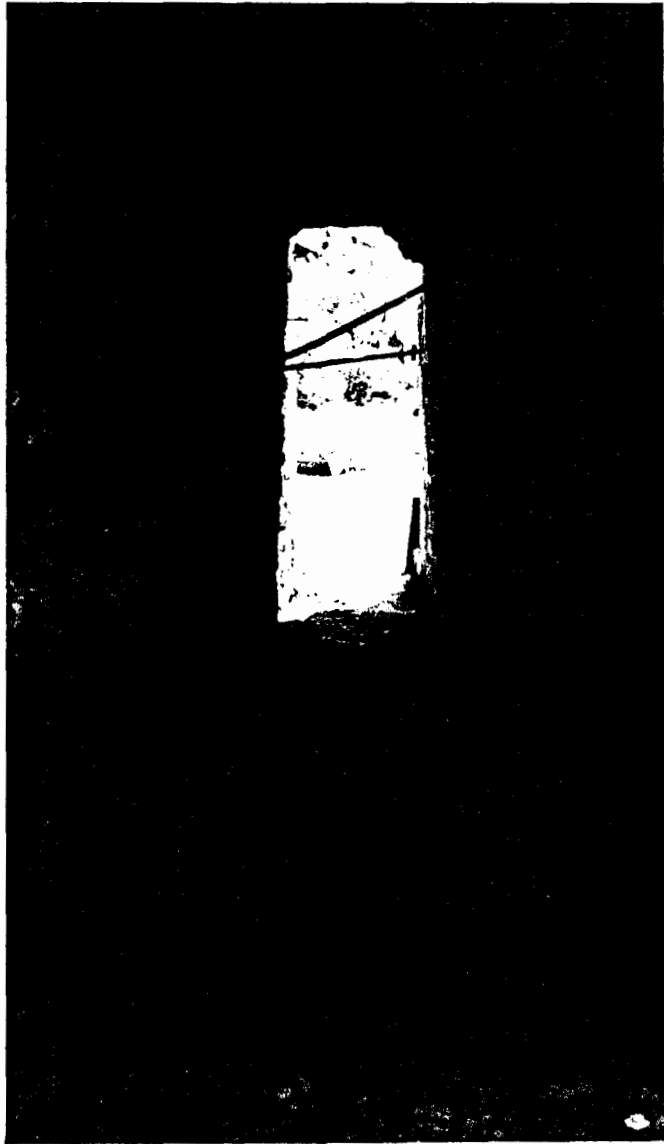
STILL HOLDING





V. 34

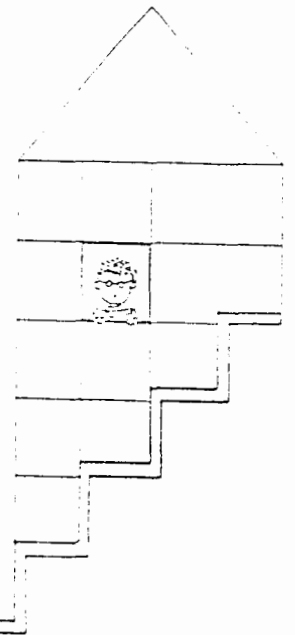


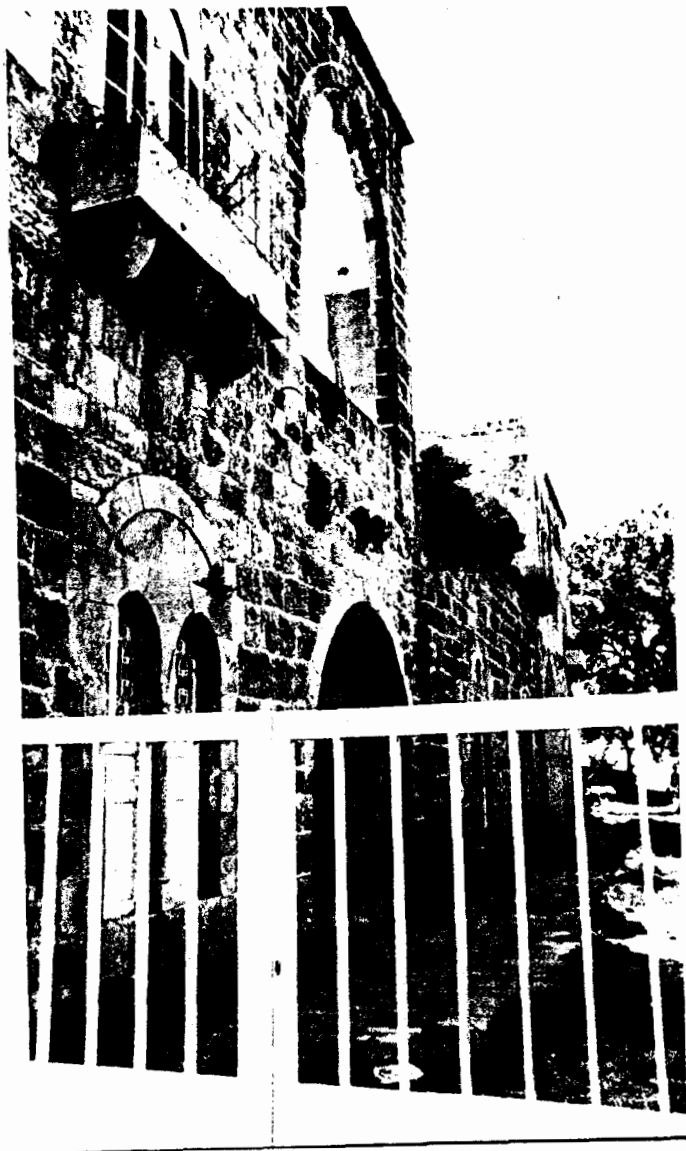


THROUGH ONE OF THE "KOSSOUR" A
PEASANT ENTERS HIS MODEST HOME

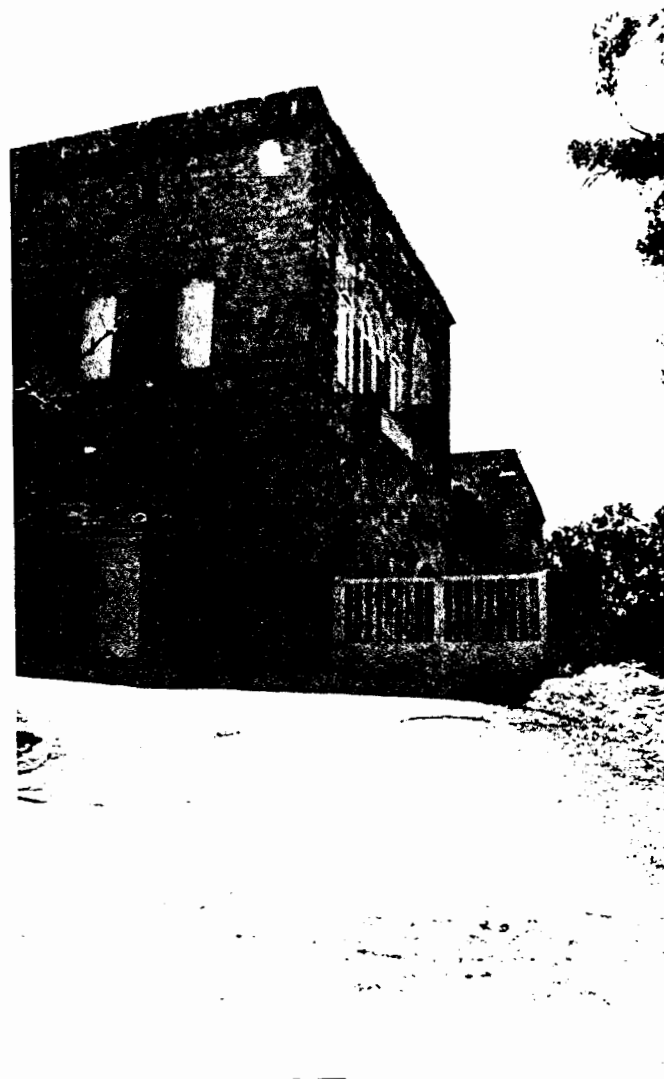


WHAT REMAINS OF AN ENTRANCE DOOR



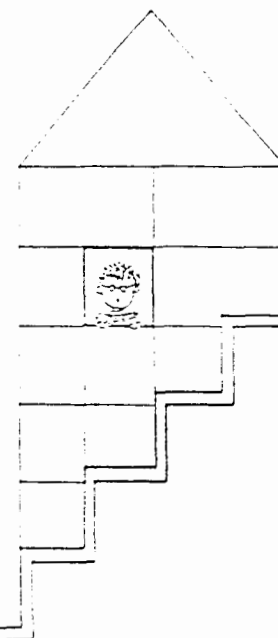


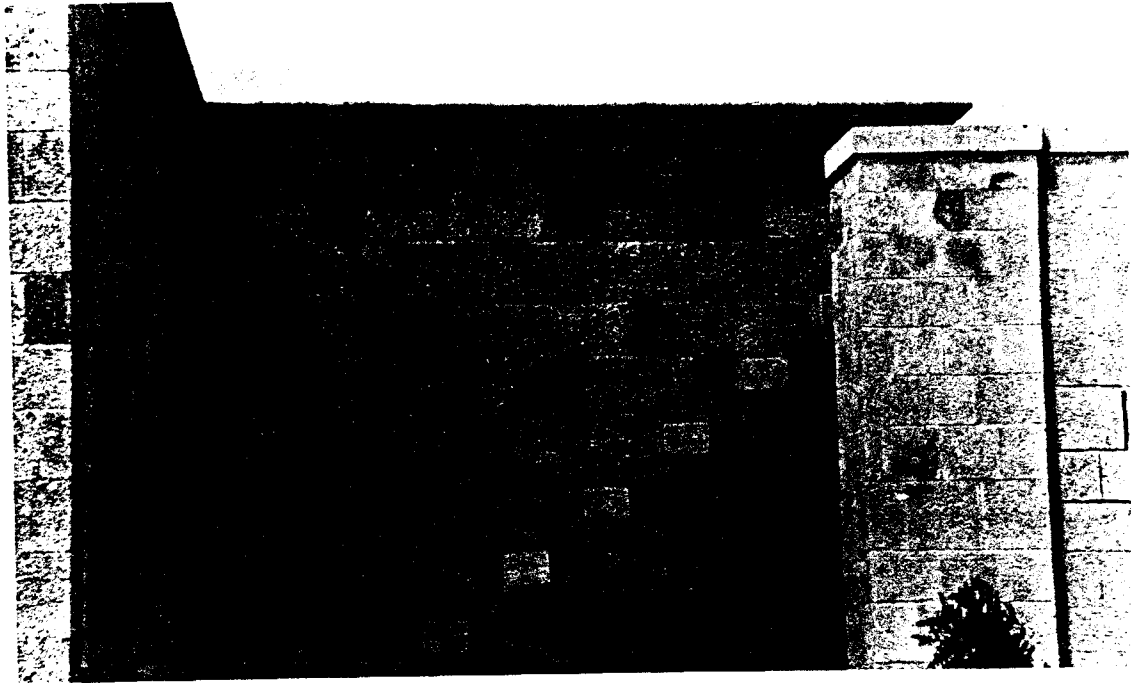
"BAYT AMINE EDDINE" (OCCUPIED NOWADAYS BY THE
BRITISH AMBASSADOR)



V. 35

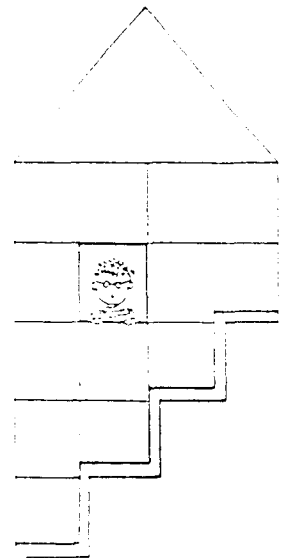
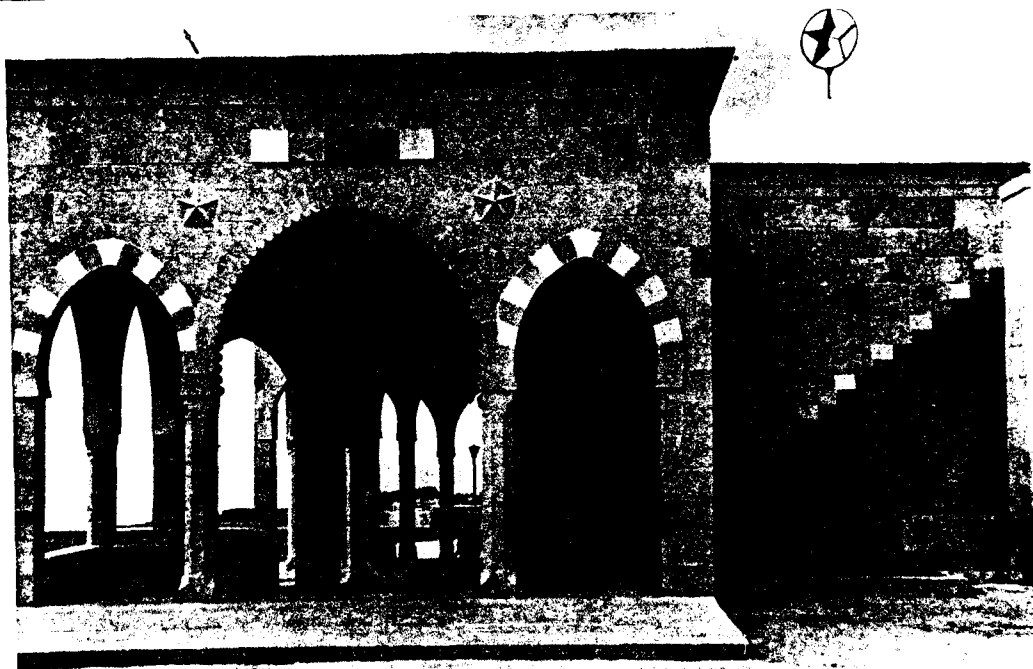
refer to ch: background p.144 for elevations and
plans.





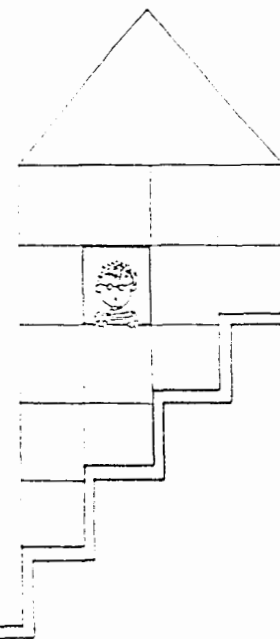
V. 36

"MAKAM ELAMIR ABDALLAH" A PREVIOUS "TANNUKHY"
MOSQUE RENEWED TO HOUSE ANOTHER FUNCTION !



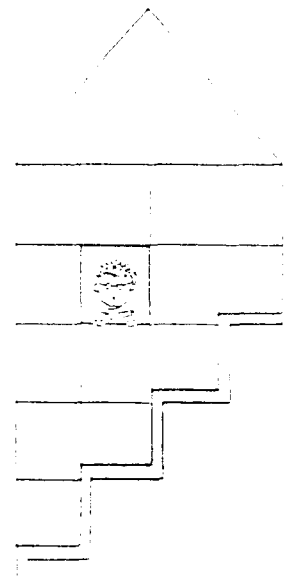


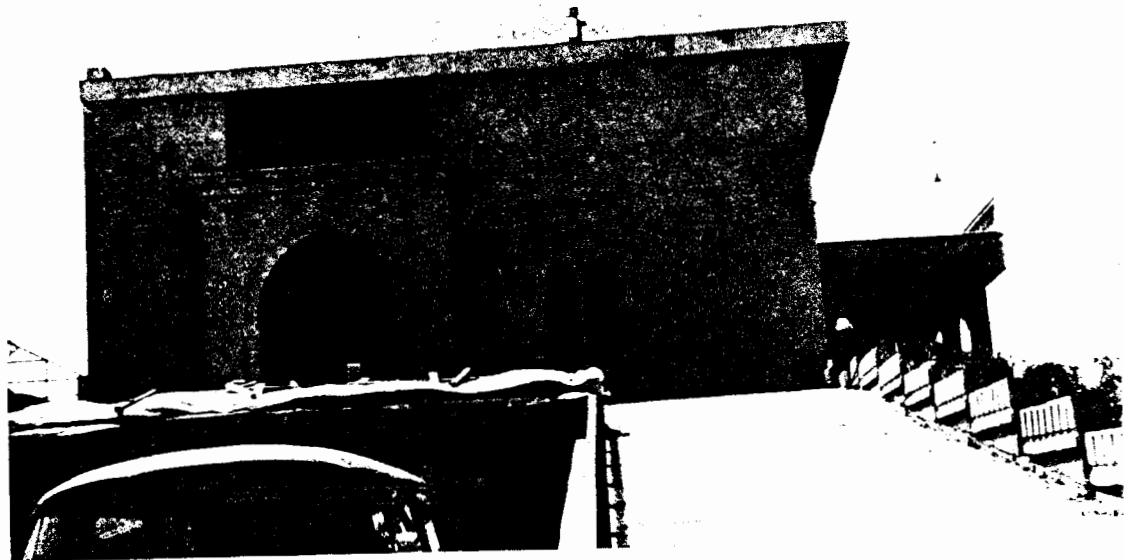
V:37 AN OLD CHURCH





V. 38

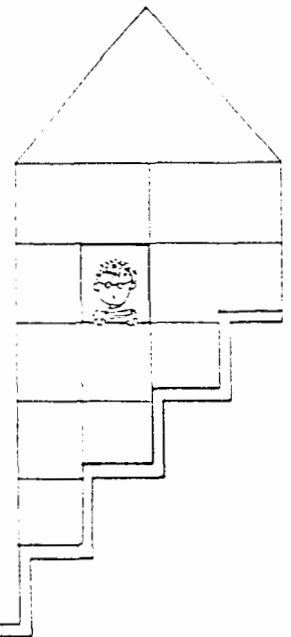




V.39

"HOUSE TOUFIC BEYK"

TRYING TO RESPOND TO CULTURAL VALUES
BY REPRODUCING SPACES OF THE PAST, YET
USING LOCAL MATERIAL WITH MODERN
TREATMENT AND BORROWING SOME
VERNACULAR ELEMENTS OF THE PAST.



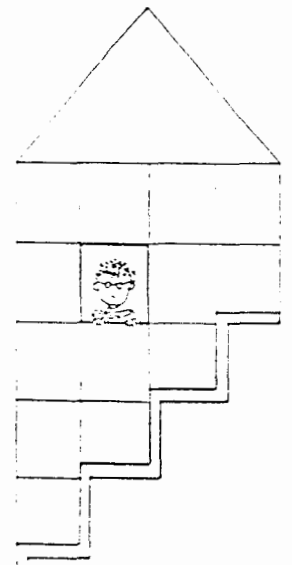


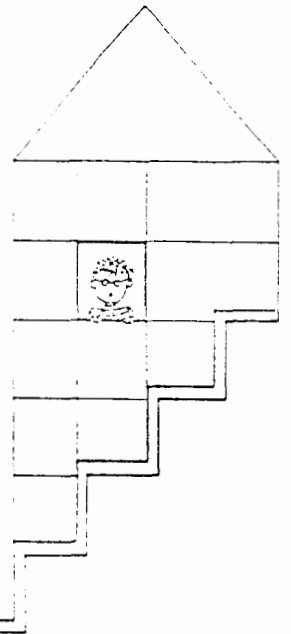
V. 40

"BAYT ELYATIM ELDURZI"
BUILT BY "AREF ELNAKADI" WITH A
CAPACITY OF 760 CHILD.

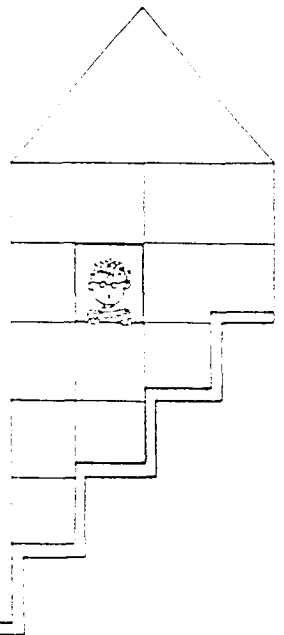
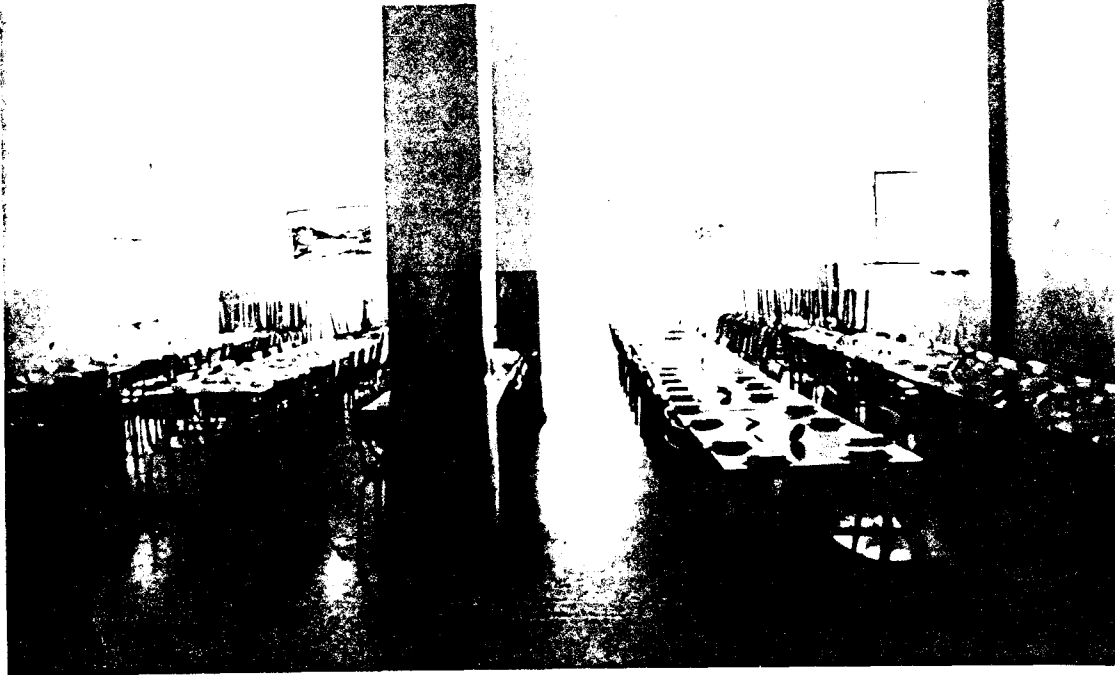


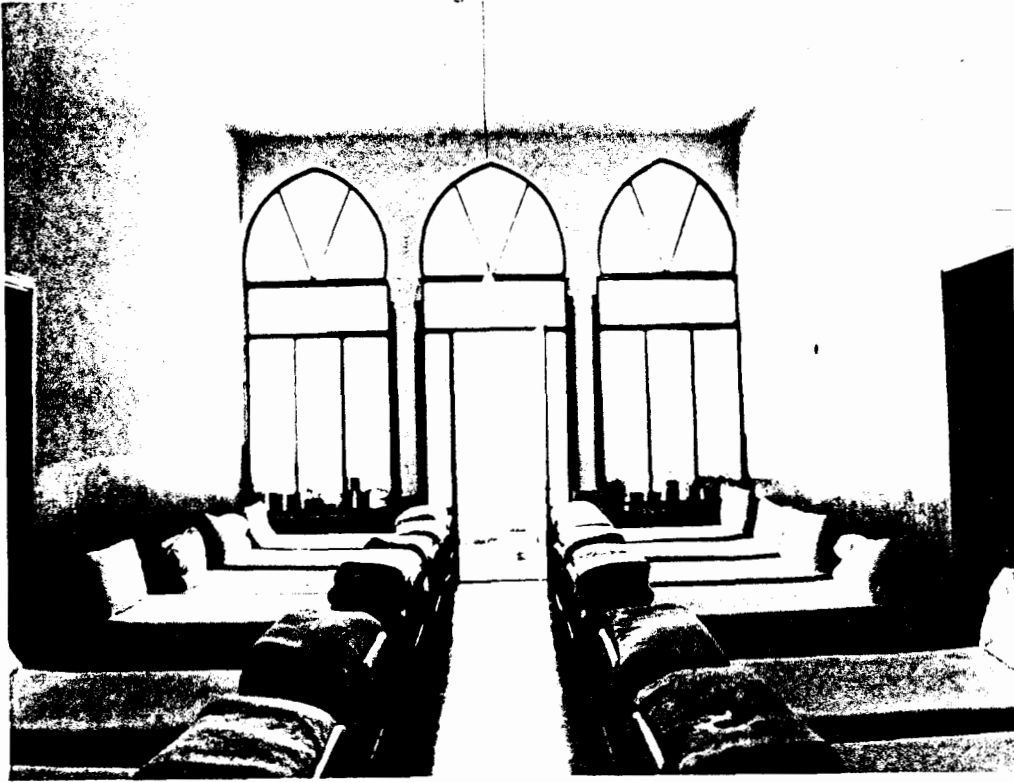
A COMPLETE SCHOOL IS BEING BUILT
NOWADAYS, WHICH WOULD FREE SOME ROOMS,
BEING OCCUPIED BY INTERMEDIATE
CLASSES.



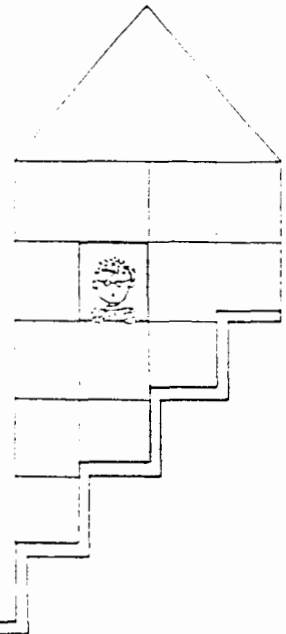


PHOTOGRAPHIC DOCUMENTATION





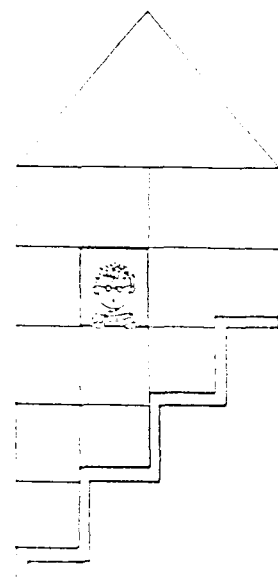
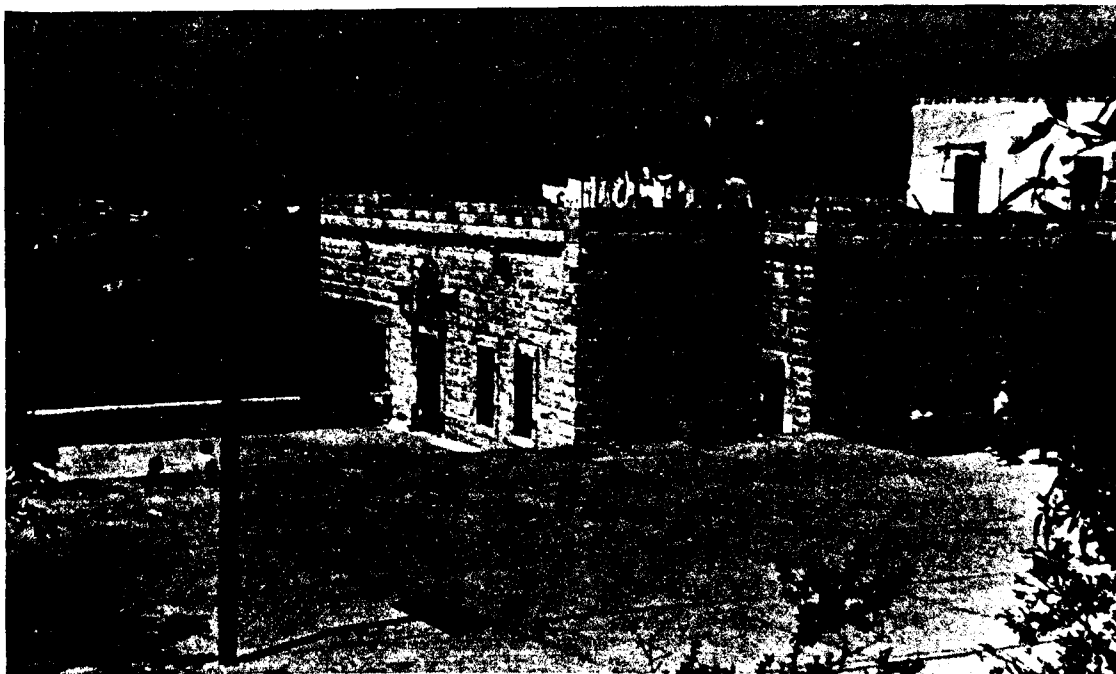
V . 4 1 A CENTRAL HALL HOUSE CONVERTED TO AN
ADDITIONAL SLEEPING SPACE FOR THE
ORPHANAGE CHILDREN.





V.42

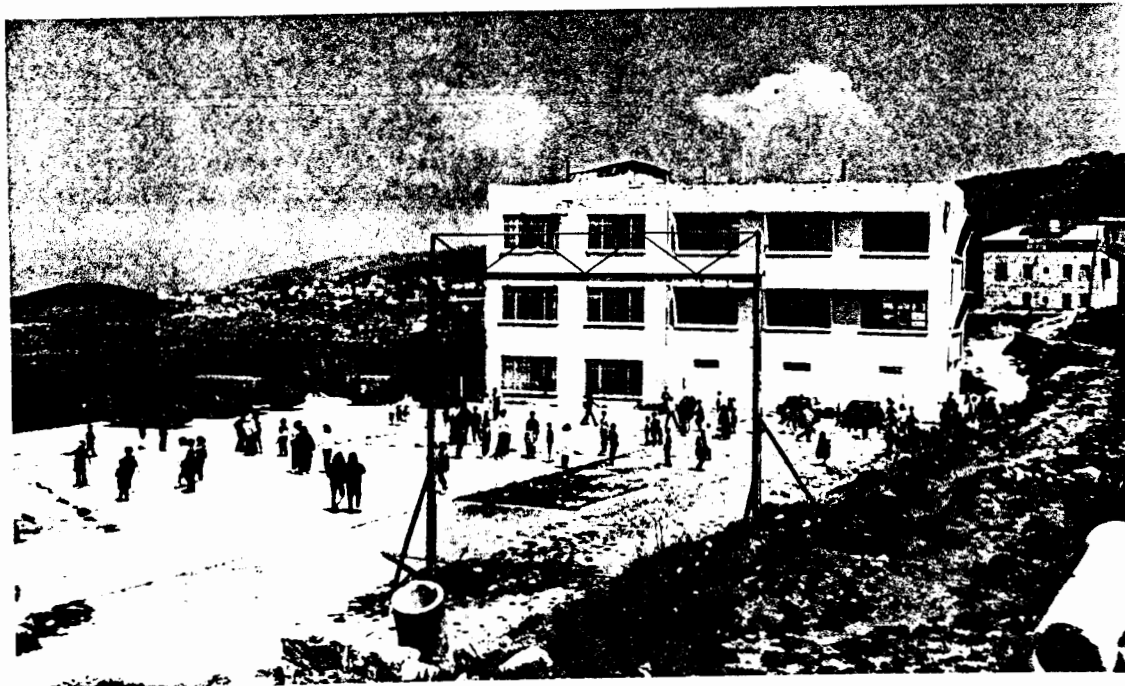
ANOTHER CENTRAL HALL HOUSE DIRECTED BY THE ORPHANAGE, CONTAINING A SCHOOL AT THE UPPER FLOOR





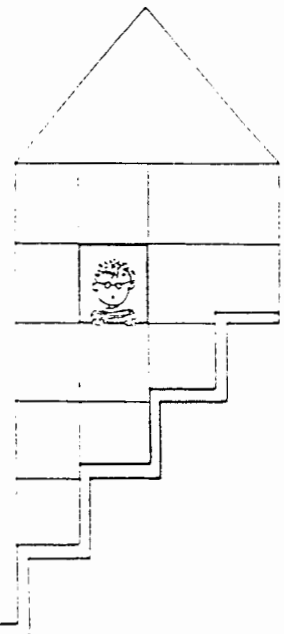
V. 43

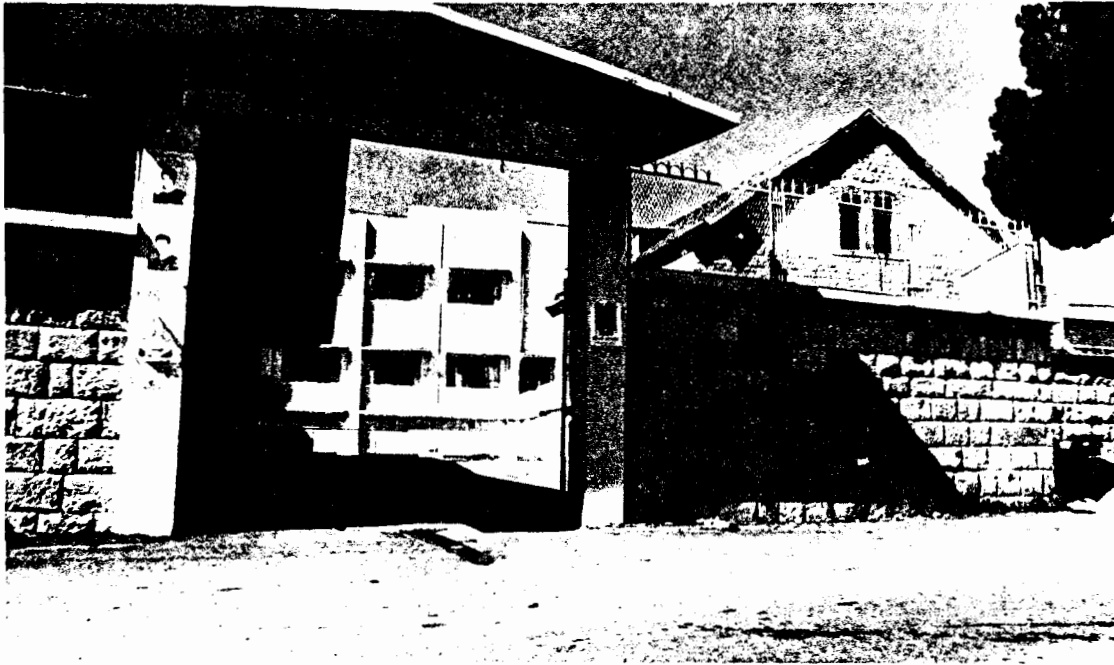
A TECHNICAL SCHOOL DIRECTED BY "BAYT
ELYATIM ELDURZI, ABEY"



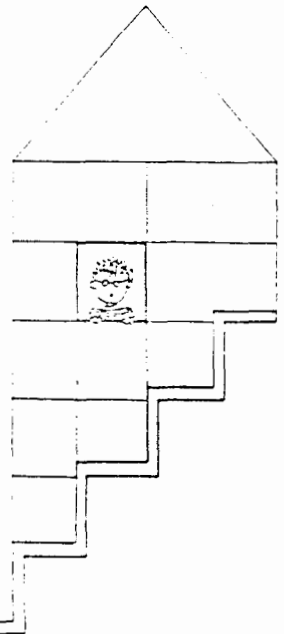
V. 44

A BACCALAUREATE SCHOOL





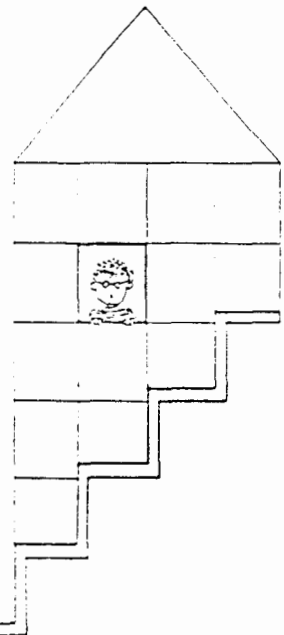
V. 45 A HOSPITAL WITH A HANDICAPPED SECTION.
BUILT BY THE "TANNUKHY" WITH A
CONTEMPORARY ADDITION TO IT.

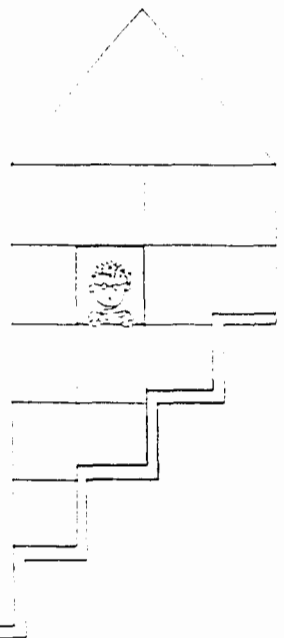
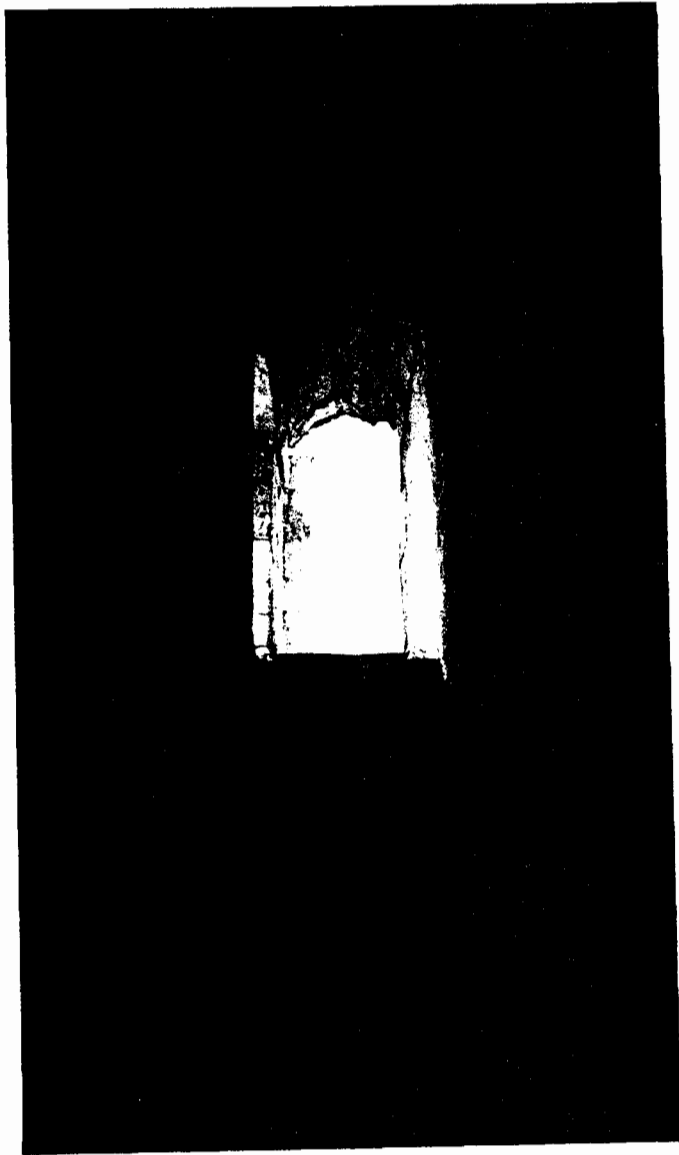




V.46

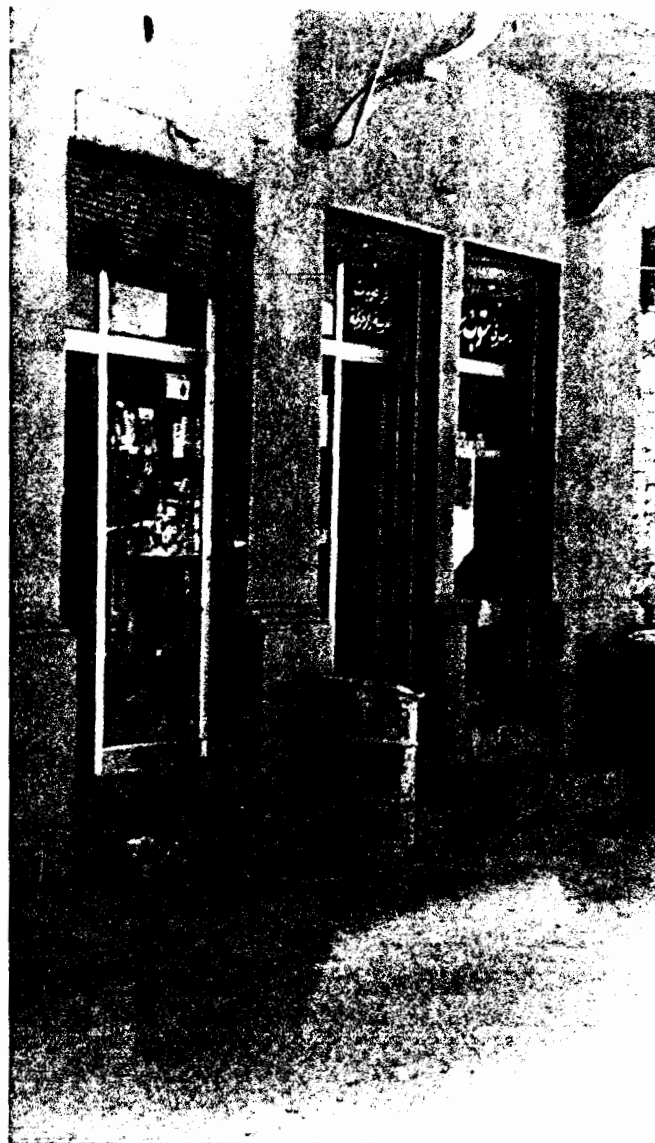
"ELMADRASSA ALTANNUKHIA", THE MOST
IMPORTANT SCHOOL FOR A BACCALAUREATE
LEVEL.







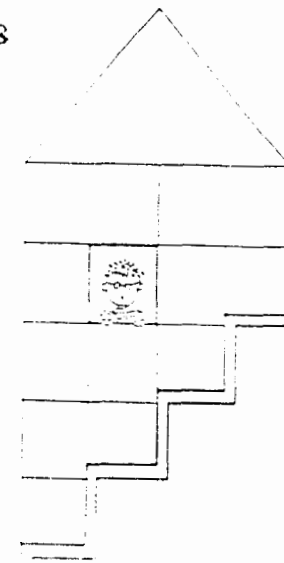
"SHOU AMBITSAWIR"

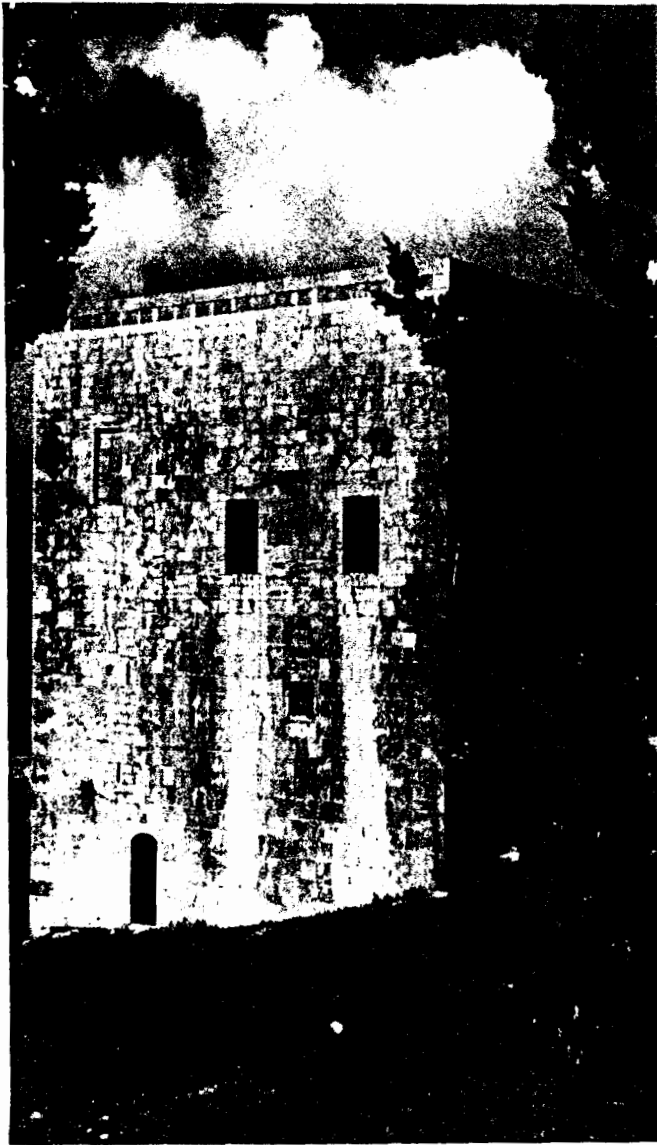


V. 47 "PATISSERIE, STOP"

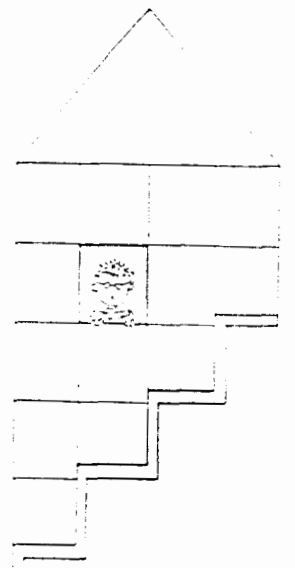


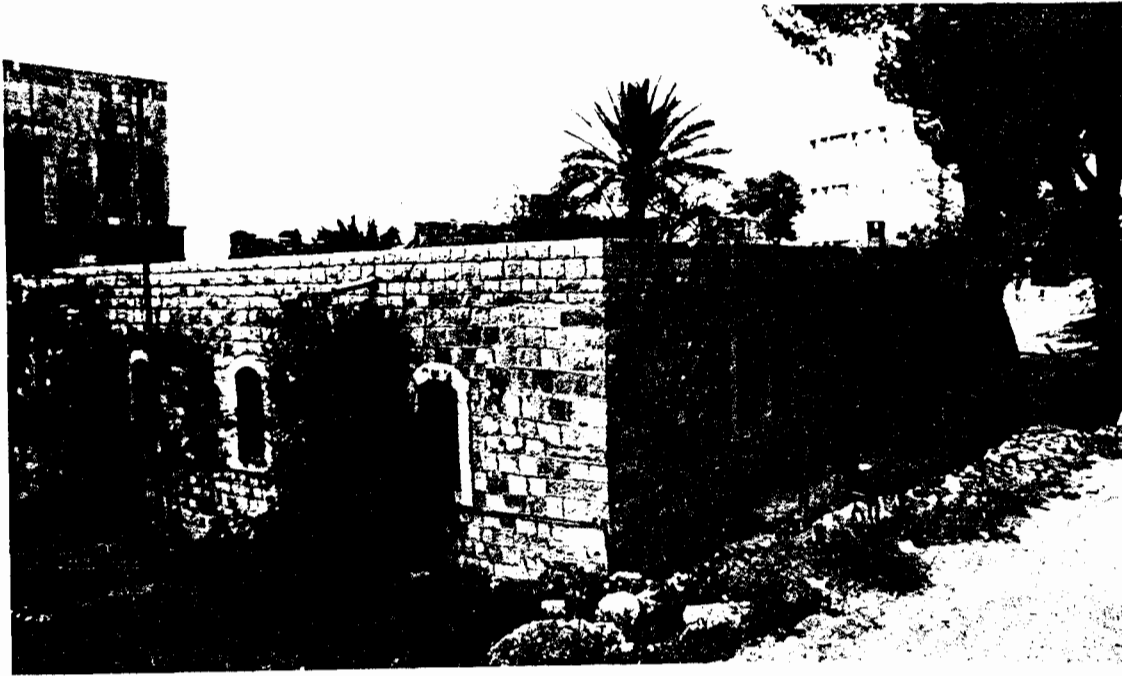
"YAATIC EEEFIE" V. 48



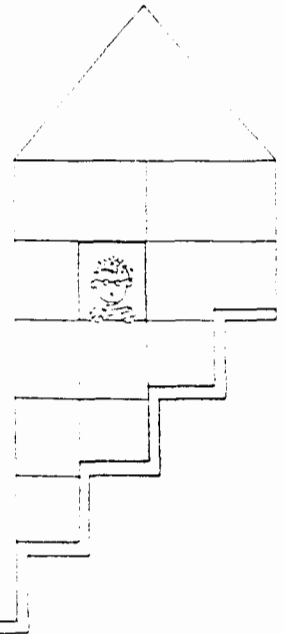


V. 49 "SERAY ELAMIR MOUNZER"





V. 50 "BAYT KANAAN"
refer to chapter: "BACKGROUND" for
elevations and plans.



W