



Published in final edited form as:

Eur J Heart Fail. 2017 July ; 19(7): 821–836. doi:10.1002/ejhf.872.

Organ dysfunction, injury and failure in acute heart failure: from pathophysiology to diagnosis and management. A review on behalf of the Acute Heart Failure Committee of the Heart Failure Association (HFA) of the European Society of Cardiology (ESC)

Veli-Pekka Harjola^{1,*†}, Wilfried Mullens^{2,3,†}, Marek Banaszewski⁴, Johann Bauersachs⁵, Hans-Peter Brunner-La Rocca⁶, Ovidiu Chioncel⁷, Sean P. Collins⁸, Wolfram Doehner^{9,10}, Gerasimos S. Filippatos¹¹, Andreas J. Flammer¹², Valentin Fuhrmann^{13,14}, Mitja Lainscak^{15,16,17}, Johan Lassus¹⁸, Matthieu Legrand^{19,20,21}, Josep Masip^{22,23}, Christian Mueller^{24,25}, Zoltán Papp²⁶, John Parissis¹¹, Elke Platz²⁷, Alain Rudiger²⁸, Frank Ruschitzka¹², Andreas Schäfer⁵, Petar M. Seferovic^{29,30}, Hadi Skouri³¹, Mehmet Birhan Yilmaz³², and Alexandre Mebazaa^{19,20,33,34}

¹Emergency Medicine, University of Helsinki, Helsinki University Hospital, Helsinki, Finland

²Department of Cardiology, Ziekenhuis Oost Limburg, Genk, Belgium ³Biomedical Research Institute, Faculty of Medicine and Life Sciences, Hasselt University, Diepenbeek, Belgium

*Corresponding author. Division of Emergency Medicine, Department of Emergency Medicine and Services, Helsinki University Hospital, PL 340, 00029 Helsinki, Finland. Tel: +358 50 4270163, Fax: + 358 9 47171488, veli-pekka.harjola@hus.fi.

[†]These authors contributed equally to this work.

Conflict of interest: V.-P.H. has received research grants from Orion Pharma, Servier, Novartis, Pfizer, Roche Diagnostics and Abbott Laboratories, and personal fees from Novartis, Bayer, Pfizer, Boehringer-Ingelheim and Roche Diagnostics. J.B. has received research grants from Bayer, Abiomed, Medtronic and Biotronik, and speaker's fees from Novartis, Bayer, Servier, Heartware, Thoratec/SJM, Pfizer and Orion. H.-P.B.-LR has received research grants from Roche Diagnostics, GlaxoSmithKline, Novartis, Servier, Vifor and Medtronic, and advisory board fees from Novartis and Servier. O.C. has received research grants from Novartis International, Servier and Vifor, and has served on steering committees for studies sponsored by Novartis, Vifor and Servier. S.P.C. has received research grants from Novartis, Cardiorentis, Medtronic, Intersection Medical and Carioxyl, and personal fees from Novartis, Trevena, Cardiorentis, Medtronic, Intersection Medical and Carioxyl. W.D. has received research grants from Sanoff and Vifor Pharma, and personal fees from Sphingotec (consulting), Vifor Pharma (lectures and consulting) and Lycotec (consulting). G.S.F. has served on the committees of trials supported by Bayer, Novartis, Servier and Vifor. A.J.F. has received research grants and travel support from Bayer, personal fees from Novartis (lectures, advisory board, travel support), Mepha (lectures), Bristol-Myers Squibb (lectures) and Abbot (advisory board), and non-financial travel support from Amgen. V.F. has received a research grant from Baxter/Gambro, and personal fees (lectures) from Baxter/Gambro and HepaWash. M.La. has received speaker's fees from Novartis, Roche Diagnostics, Servier and Vifor. J.L. has received personal fees from Bayer, Boehringer-Ingelheim, Novartis, Pfizer, Roche Diagnostics, Orion Pharma, Servier and Vifor Pharma. M.Le. has received a research grant from Baxter, and personal fees from Adrenomed, Astellas, Gilead and Alere. J.M. has received consulting fees from Novartis and Cardiorentis. C.M. has received research support from the Swiss National Science Foundation, the Swiss Heart Foundation, the KTI, the Stiftung für kardiovaskuläre Forschung Basel; Abbott, Alere, Astra Zeneca, Beckman Coulter, Biomerieux, Brahms, Roche, Siemens, Singulex, Sphingotec, and the Department of Internal Medicine, University Hospital Basel, as well as speaker honoraria/consulting honoraria from Abbott, Alere, Astra Zeneca, Biomerieux, Boehringer Ingelheim, BMS, Brahms, Cardiorentis, Novartis, Roche, Siemens, and Singulex. J.P. has received honoraria for lectures from Novartis, Roche Diagnostics and Orion Pharma. E.P. has received consulting fees from Sanoff and Parexel, and research grants from the National Heart, Lung and Blood Institute (no. 5K23HL123533-02) and the William F. Milton Fund (Harvard University). A.R. has received a research grant from Amomed/AOP Orphan, and personal fees from Novartis (lecture and consulting), Amomed/AOP Orphan (lecture, travel expenses), Baxter (lecture) and Orion (travel expenses). F.R. has received a research grant from SJM, and personal fees from SJM, Servier, Zoll, AstraZeneca, HeartWare, Sanoff, Cardiorentis, Novartis, Amgen and Bristol Myers Squibb. A.S. has received lecture fees from Abiomed. M.B.Y. has received research grants and speaker's honoraria from Novartis, Servier, Bayer and Amgen. A.M. has received speaker's honoraria from Abbott, Novartis, Orion, Roche and Servier, and advisory board or steering committee fees from Cardiorentis, Adrenomed, MyCartis, ZS Pharma and Critical Diagnostics. W.M., M.B., Z.P., P.M.S. and H.S. declare no conflicts of interest.

⁴Intensive Cardiac Therapy Clinic, Institute of Cardiology, Warsaw, Poland ⁵Department of Cardiology and Angiology, Medical School Hannover, Hannover, Germany ⁶Department of Cardiology, Maastricht University Medical Centre, Maastricht, the Netherlands ⁷Institute of Emergency in Cardiovascular Disease, University of Medicine Carol Davila, Bucharest, Romania ⁸Department of Emergency Medicine, Vanderbilt University Medical Centre, Nashville, TN, USA ⁹Centre for Stroke Research, Berlin, Germany ¹⁰Department of Cardiology, Charité Medical University, Berlin, Germany ¹¹National and Kapodistrian University of Athens, School of Medicine, Athens University Hospital Attikon, Athens, Greece ¹²University Heart Centre, University Hospital Zurich, Zurich, Switzerland ¹³Division of Gastroenterology and Hepatology, Medical University of Vienna, Vienna, Austria ¹⁴Department of Intensive Care Medicine, University Medical Centre Hamburg-Eppendorf, Hamburg, Germany ¹⁵Department of Internal Medicine, General Hospital Murska Sobota, Murska Sobota, Slovenia ¹⁶Department of Research and Education, General Hospital Murska Sobota, Murska Sobota, Slovenia ¹⁷Faculty of Medicine, University of Ljubljana, Ljubljana, Slovenia ¹⁸Cardiology, University of Helsinki, Helsinki University Hospital, Helsinki, Finland ¹⁹U942 Inserm, Assistance Publique–Hôpitaux de Paris (AP-HP), Paris, France ²⁰Investigation Network Initiative Cardiovascular and Renal Clinical Trialists (INI-CRCT), Nancy, France ²¹Department of Anaesthesiology, Critical Care and Burn Unit, St Louis Hospital, University Paris Denis Diderot, Paris, France ²²Consorci Sanitari Integral (Public Health Consortium), University of Barcelona, Barcelona, Spain ²³Department of Cardiology, Hospital Sanitas CIMA, Barcelona, Spain ²⁴Department of Cardiology, University Hospital Basel, Basel, Switzerland ²⁵Cardiovascular Research Institute Basel (CRIB), University Hospital Basel, Basel, Switzerland ²⁶Division of Clinical Physiology, Department of Cardiology, Research Centre for Molecular Medicine, Faculty of Medicine, University of Debrecen, Debrecen, Hungary ²⁷Department of Emergency Medicine, Brigham and Women’s Hospital, Harvard Medical School, Boston, MA, USA ²⁸Cardio-Surgical Intensive Care Unit, University Hospital Zurich, University of Zurich, Zurich, Switzerland ²⁹Department of Internal Medicine, Belgrade University School of Medicine, Belgrade, Serbia ³⁰Heart Failure Centre, Belgrade University Medical Centre, Belgrade, Serbia ³¹Division of Cardiology, Department of Internal Medicine, American University of Beirut Medical Centre, Beirut, Lebanon ³²Department of Cardiology, Faculty of Medicine, Cumhuriyet University, Sivas, Turkey ³³University Paris Diderot, Paris, France ³⁴Department of Anaesthesia and Critical Care, University Hospitals Saint Louis–Lariboisière, Paris, France

Abstract

Organ injury and impairment are commonly observed in patients with acute heart failure (AHF), and congestion is an essential pathophysiological mechanism of impaired organ function. Congestion is the predominant clinical profile in most patients with AHF; a smaller proportion presents with peripheral hypoperfusion or cardiogenic shock. Hypoperfusion further deteriorates organ function. The injury and dysfunction of target organs (i.e. heart, lungs, kidneys, liver, intestine, brain) in the setting of AHF are associated with increased risk for mortality. Improvement in organ function after decongestive therapies has been associated with a lower risk for post-discharge mortality. Thus, the prevention and correction of organ dysfunction represent a therapeutic target of interest in AHF and should be evaluated in clinical trials. Treatment strategies that specifically prevent, reduce or reverse organ dysfunction remain to be identified and evaluated

to determine if such interventions impact mortality, morbidity and patient-centred outcomes. This paper reflects current understanding among experts of the presentation and management of organ impairment in AHF and suggests priorities for future research to advance the field.

Keywords

Heart failure; Multiple organ failure; Venous congestion

Introduction

Acute heart failure (AHF) is characterized by an acute or subacute deterioration in cardiac function resulting from numerous possible underlying heart diseases and precipitating factors.¹ Congestion is the predominant clinical profile in most patients with AHF; a smaller proportion presents with peripheral hypoperfusion or cardiogenic shock.^{1–3} Congestion or hypoperfusion can lead to organ injury, impairment and, ultimately, the failure of target organs (i.e. heart, lungs, kidneys, liver, intestine, brain), which are associated with increased mortality. Data suggest that the correction and prevention of organ injury are associated with better outcomes.⁴ Thus, the prevention and correction of organ dysfunction have evolved as therapeutic targets of interest in AHF and should be further evaluated in clinical trials.⁵

The pathophysiology behind organ injury in AHF remains incompletely understood. Elderly patients with comorbidities are especially predisposed to organ injury.⁶ Treatment strategies that prevent, reduce or reverse organ injury need to be tested for their effects on morbidity, mortality and patient-centred outcomes. The Heart Failure Association (HFA) of the European Society of Cardiology (ESC) convened a multidisciplinary group of experts to discuss existing knowledge and emerging evidence regarding organ injury in AHF and its associated pathophysiology, clinical assessment, management and research needs.

Pathophysiological mechanisms of organ injury in acute heart failure

Acute heart failure is a heterogeneous syndrome. Patients with *de novo* AHF may have fluid overload less often, whereas those with worsening chronic heart failure (CHF) more commonly have fluid excess. The ESC heart failure guidelines classify patients based on the presence of congestion and/or hypoperfusion.¹ The ‘wet and warm’ (congestion without hypoperfusion) presentation is most commonly encountered (in more than 90% of cases)¹ and is the focus of this manuscript.

Haemodynamic mechanisms of organ injury

Congestion caused by elevated filling pressure

In AHF, blood remains upstream of the ventricles, which results in increased filling pressures (i.e. congestion) that impair organ function. Pulmonary congestion and pulmonary oedema occur when blood remains upstream of the left ventricle because of elevated left atrial pressure, whereas congestion of organs in the abdominal cavity ensues when blood remains upstream of the right ventricle (Figure 1).^{7–9} Pulmonary and organ congestion may occur separately or simultaneously. In addition, increased intra-abdominal pressure as a

result of organ congestion and/or ascites may further contribute to injury or impairment of the end-organs impacted by these increased pressures.

Congestion indicates excessive vascular filling of the central venous system. Filling pressure depends on venous compliance and capacitance,¹⁰ plasma volume and cardiac function. Indeed, the transition from CHF to AHF is often attributed to increased sodium avidity and extracellular volume overload, leading to a progressive increase in cardiac filling pressures.^{11–13} However, filling pressure is a poor surrogate for volume overload. In one study, 54% of patients hospitalized for AHF gained 0.9 kg during the 30 days prior to admission,¹⁴ suggesting that volume overload incompletely characterizes the pathophysiology of AHF. Additionally, weight loss during hospitalization is not necessarily always associated with improved in-hospital or post-discharge morbidity or mortality.¹⁵

Consequently, it has been suggested that redistribution (from venous capacitance beds to the central venous system) rather than absolute volume overload may be a frequent cause of increased cardiac filling pressures.^{16–19} The abdominal compartment probably plays an important role in this as the splanchnic venous system contains 25% of total blood volume.¹⁸ It normally pools and releases blood in order to maintain an optimal cardiac preload. Splanchnic arterioles and veins are very sensitive to changes in sympathetic activity.¹⁶ Increased sympathetic output leads to splanchnic arterial and venous constriction and blood redistribution from the splanchnic capacitance vasculature to circulatory volume, which increases venous return and raises cardiac filling pressures.^{16,18} Indeed, this capacitance function becomes compromised during states of longstanding venous congestion and/or increased sympathetic activation in AHF.^{18,20} Failure of the abdominal compartment buffer systems may ultimately result in a cardio–abdominal–renal syndrome.^{17,18,21}

Organ hypoperfusion—Acute heart failure with a clinical profile of low cardiac output and subsequent organ hypoperfusion (cold–dry or cold–wet¹) is much less common than a profile of congestion with normal perfusion. It is usually associated with low systolic blood pressure (<90 mmHg) and mean arterial pressure (<65 mmHg) (i.e. cardiogenic shock). Incidences of cardiogenic shock are 5.7–10.1% in acute myocardial infarction^{22,23} and approximately 4% in AHF.^{1,2,24} The aetiology of cardiogenic shock is acute coronary syndrome in 80% of cases.²⁵

Perfusion that is inadequate to meet the metabolic demands of tissues results in hypoxia and inadequate aerobic metabolism and, ultimately, cell injury, cell death, tissue injury and organ failure. Patients with low output syndrome have more chronic or subacute manifestations of poor perfusion, whereas cardiogenic shock is characterized by an abrupt onset. Organ impairment in the setting of shock is of prognostic importance. In the CardShock study, confusion, elevated blood lactate and a reduced glomerular filtration rate (GFR) were significant predictors of in-hospital mortality.²⁵ Of note, excessive diuretic therapy may reduce cardiac preload, thereby diminishing stroke volume and contributing to the shock state iatrogenically.²⁶

Neurohormonal response and inflammation in acute heart failure: impacts on endothelial glycocalyx and vascular function

The neurohormonal and inflammatory response to systemic congestion and/or peripheral hypoperfusion, if present, may further contribute to organ injury.^{26–28} Neurohormones, oxidative stress and inflammation may also impair the structure and function of the endothelial glycocalyx (eGC) that is composed of glycosaminoglycan (GAG) networks.²⁹ These GAG networks function as sodium buffers and play important roles in fluid homeostasis and endothelial function. In heart failure, neurohormonal alterations disrupt GAG structure, leading to loss of the interstitial buffer capacity and disproportionate interstitial fluid accumulation.²⁹ Moreover, a diminished eGC results in increased vascular resistance and disturbed endothelial nitric oxide production, leading to endothelial dysfunction.²⁹ Endothelial dysfunction increases left and right ventricular systolic workload, potentially contributing to organ injury,³⁰ and is a predictor of morbidity and mortality in heart failure of any stage.^{31–34}

Organ systems impacted by congestion in acute heart failure: progression from injury to failure

Heart

Venous or systemic congestion increases preload, which leads to increased ventricular wall stress, valvular regurgitation, myocardial stretch, remodelling, ventricular myocyte necrosis and a progressive decline in cardiac function.³⁵ Natriuretic peptides are released from the atria or ventricle under such conditions of wall stretch or cardiac stress.³⁶

Cardiac troponin is detectable in a large proportion of patients with AHF, especially with high-sensitivity assays,³⁷ revealing non-ischaemic myocyte injury or necrosis.^{37–39} Troponin release may be secondary to increased wall stress, structural changes in the myocardium, elevated myocardial pressure, direct toxicity of circulating catecholamines or inflammation.³⁷ In the Relaxin in Acute Heart Failure (RELAX-AHF) study, 90% of patients had high-sensitivity troponin T (TnT) levels above the 99th upper reference limit, with a median value of 0.033 $\mu\text{g/L}$.⁴⁰ Conversely, patients without detectable high-sensitivity cardiac-specific TnT (cTnT) may be at decreased risk for subsequent events.⁴¹

Lungs

Rises in hydrostatic left atrial pressure and mitral regurgitation are transmitted backward as increased pressure to the pulmonary capillaries, creating an imbalance in capillary Starling forces. These changes increase the regular fluid filtration rate to the interstitium, causing lung stiffness and, in some patients, dyspnoea. The lymphatic system regularly drains interstitial fluid, but when interstitial pressure exceeds pleural pressure and surpasses drainage capacity, fluid moves to pleural and intra-alveolar spaces, causing pleural effusion and alveolar oedema.⁴² Individual susceptibility and genetic characteristics, often involving nitric oxide interactions, may explain why some patients develop pulmonary oedema and others with similar haemodynamics do not.^{43–45} An inflammation-triggered increase in

permeability of the pulmonary vasculature may play a role in patients who develop pulmonary oedema despite relatively low hydrostatic pressures.⁴⁶

Repetitive or severe decompensations may result in cardiopulmonary remodelling (i.e. endothelial dysfunction, proliferation of myofibroblasts, fibrosis and thickening of the extracellular matrix) with an impairment in alveolar gas diffusion properties,⁴⁷ pulmonary vasoconstriction and, finally, pulmonary hypertension.⁴⁸ This process also leads to the restrictive ventilation pattern observed in CHF.⁴⁹ The bronchial tree is also affected, which may lead to an obstructive or reactive airway disease pattern.⁵⁰

Kidneys

Cardiorenal syndrome refers to the pathophysiological interplay between the heart and kidney. Type 1 cardiorenal syndrome is manifested as an acute cardiac event (e.g. AHF) that results in kidney injury and renal dysfunction.⁹ Depending on its definition, the reported incidence of worsening renal function during AHF hospitalization is 20–30%.⁵¹

Systemic congestion was a stronger predictor of worsening renal function than cardiac output or mean arterial pressure in analyses of patients with decompensated advanced heart failure.^{52–54} Recent evidence from the Evaluation Study of Congestive Heart Failure and Pulmonary Artery Catheterization Effectiveness (ESCAPE) trial showed no positive association between cardiac index and renal function,⁵⁵ suggesting that worsening renal function cannot be predominantly attributed to reduced cardiac output in the population of patients represented by this analysis (i.e. patients who are hospitalized for decompensated heart failure without shock).⁵⁴ Elevated central venous pressure may worsen renal function through several different mechanisms, including pressure-induced reduction in renal blood flow, renal hypoxia, increased interstitial pressure and interstitial fibrosis.⁵⁶ Other contributors to acute kidney injury or worsening renal function in AHF include inflammatory mediators (e.g. infection, tissue damage), iatrogenic damage (e.g. contrast media, nephrotoxic medication), low cardiac output⁵⁷ and elevated intra-abdominal pressure.¹⁷

Type 1 cardiorenal syndrome consists of subclinical injury, which can be detected by tubular markers (Table 1), and acute kidney injury, which is reflected by a rise in functional markers (creatinine and cystatin C). Whether tubular markers in plasma or urine will be helpful in distinguishing these two clinically important entities remains unproven. Kidney Disease Improving Global Outcomes (KDIGO) defines acute kidney injury as indicated by any of the following: an increase in serum creatinine by 0.3 mg/dL (26.5 μ mol/L) within 48 h; an increase in serum creatinine to 1.5 times the baseline level, which is known or presumed to have occurred within the prior 7 days, and urine volume of <0.5 mL/kg/h for 6 h.⁵⁸ Impaired baseline renal function is the strongest risk factor for acute kidney injury,⁵⁹ suggesting that underlying intrinsic kidney disease is an important determinant of kidney reserve and the renal response to AHF and aggressive diuretic treatment.

The clinical progression of renal dysfunction in patients with AHF is complex and may follow any of several pathways. In some patients, clinical improvement of the AHF state leads to improved renal function. Prior studies have found a small absolute increase in serum

creatinine (i.e. 0.3 mg/dL) within 48 h, as well as a cystatin C increase of 0.3 mg/L, to be clinically important markers of acute kidney injury and to predict death or hospitalization for heart failure in patients with AHF.^{4,51,60–63} However, patients who experience transient worsening of renal function in conjunction with clinical heart failure improvement may have ‘pseudo worsening renal function’ and may not be at increased risk for adverse events.^{63,64} Pseudo worsening renal function is mostly the result of changing intraglomerular haemodynamics rather than renal injury. Although aggressive fluid removal is related to deterioration in renal function and haemoconcentration, haemoconcentration is associated with improved survival in AHF.⁶⁵ In fact, a recent secondary analysis suggested improved renal function may be associated with worsened outcomes when compared with worsening renal function.⁶⁶ Clearly, the clinical scenario (i.e. improved or worse) must be considered when interpreting changes in renal function. Thus, some degree of ‘worsening renal function’ is acceptable while effective decongestion is ongoing. Finally, only very few patients with cardiac improvement will have renal tubular injury and experience an irreversible decline in GFR that is prognostically important. Unfortunately, it is very difficult to predict the renal response to decongestion.

Liver

Hepatic dysfunction is present in 20–30% of patients with AHF.^{7,67–69} Elevated liver enzymes portend a poor prognosis.⁷ Hepatic dysfunction is also closely related to renal dysfunction in AHF (i.e. cardio–renal–hepatic syndrome). These conditions may have synergistic prognostic implications.^{70–73}

In the setting of venous congestion, cholestasis is observed with elevation of alkaline phosphatase, bilirubin and γ -glutamyltransferase (GGT).^{68,74,75} Cholestasis is a more common finding in patients with AHF than the more ominous finding of centrilobular necrosis and elevated transaminases as a result of hypoperfusion in the setting of hypoxic hepatitis.⁷⁴ Hypoxic liver injury is the most common cause of massively raised aminotransferase levels in hospital.⁷⁶ It occurs in 5–10% of patients with critical illness⁷⁷ and is a strong risk factor for mortality in the intensive care unit (ICU).⁷⁸

Intestine

Intestinal morphology, permeability and absorption are altered in heart failure.^{79–81} Increased intestinal permeability and an augmented bacterial biolayer may contribute to the origins of both chronic inflammation and malnutrition.^{80,81} Systemic/venous congestion, sympathetic vasoconstriction and low cardiac output contribute to decreased flow in the splanchnic microcirculation and increase the risk for bowel ischaemia.¹⁸ Ischaemia causes epithelial cell dysfunction and loss of the barrier function of the intestine, which allows lipopolysaccharide or endotoxin produced by gram-negative gut bacteria to enter the circulatory system.¹⁸ These effects trigger systemic inflammation and cytokine generation, leading to several abnormalities of cardiomyocyte function and energetics.¹⁸ Interestingly, the Mini Nutritional Assessment revealed that 75% of patients with AHF had malnutrition or were at risk for malnutrition, suggesting this pathophysiology is highly prevalent.⁸²

Brain

Normal cerebral perfusion is generally very stable: there is a short time window before cerebral damage occurs in the setting of hypoperfusion. Impairment of higher cortical function can occur in at least three inseparable phenotypes in patients with AHF: depression, cognitive dysfunction, and delirium.⁸³ Prevalences of cognitive impairment in AHF of 54–75% have been reported.^{84–87} Delirium is an acute disorder of inattention and global cognitive dysfunction, and is associated with significant adverse outcomes in patients with acute medical illness.⁸⁸ Cerebral dysfunction is associated with an independent increase in mortality in patients with AHF.^{89,90}

Hypoxaemia is the primary cause of cerebral dysfunction in AHF, but other factors (e.g. inflammation, stress and neurohormonal dysregulation) may also play significant roles.⁹¹ As well as higher cortical dysfunction, impaired neurocardiac reflexes may affect haemodynamic control of the vasculature and myocardial performance, based on feedback from peripheral tissues to the brain. Diversion of the chemoreflex sensitivity occurs in the setting of altered haemodynamics (e.g. congestion) and may worsen with increasing severity of heart failure.^{92,93} Silent cerebral infarctions, hypotension, disturbances of cerebral metabolism, cardiac embolism, frailty and low adherence to medications may also contribute to cognitive dysfunction and depression in AHF.⁸⁹

Clinical and biochemical assessments of acute heart failure and organ injury

Initial work-up

Patients presenting to the emergency department (ED) with symptoms of AHF require an extensive work-up to differentiate between AHF and other causes of dyspnoea, monitor response to therapy, quantify risk, and determine the need for admission. Rapid and accurate diagnosis may facilitate faster initiation of decongestive and other therapies, which, in turn, may reduce or prevent the extent of organ injury, but this hypothesis needs to be tested. Importantly, diagnostic and therapeutic plans commonly occur in parallel in patients suspected of AHF.

Diagnosing and monitoring pulmonary oedema

Pulmonary oedema is characterized by pulmonary congestion in the face of an acutely increased preload or afterload, with a rapid onset, extensive alveolar flooding and significant respiratory distress. An abrupt increase in pulmonary congestion leads directly to decreased pulmonary compliance, which further contributes to tachycardia, tachypnoea and hypoxaemia. Acute pulmonary oedema is characterized by increased work of breathing with a respiratory rate of >25 breaths/min and peripheral oxygen saturation by pulse oximetry (SpO₂) of <90%.⁹⁴ Monitoring of SpO₂ provides reliable information about arterial oxygen saturation (SaO₂).⁹⁵ Respiratory rate⁹⁶ and SpO₂⁹⁷ also closely correlate with AHF severity and mortality. Increases in peripheral oedema and body weight occur in a relatively small proportion of pulmonary oedema patients, suggesting that relative volume

redistribution, as opposed to an absolute increase in total body fluid, may play a major role in the pathophysiology of the pulmonary oedema phenotype.¹⁹

Blood gas analysis of venous samples can be useful for a rapid assessment of acid–base status.⁹⁵ Arterial blood gas analysis is indicated in patients with suspected severe hypoxaemia, hypoventilation and cardiogenic shock, high risk or suspicion of hypercapnia, or in whom oxygenation cannot be assessed reliably by pulse oximetry.⁹⁴ Dyspnoea causes hyperventilation and consequent hypocapnia,⁹⁸ especially in mild or early stages of pulmonary oedema. A significant fall in alveolar ventilation occurs in patients with concomitant chronic obstructive pulmonary disease (COPD) and in those with severe or advanced acute pulmonary oedema and respiratory fatigue, which usually will lead to hypercapnia. Mixed acidosis (respiratory and metabolic) is the predominant blood gas alteration in severe acute pulmonary oedema.^{99–101} Severe metabolic acidosis, seen in cardiogenic shock, triggers hyperventilation (Kussmaul breathing) and contributes to respiratory distress.⁹⁸ Blood lactate reflects the severity of hypoperfusion and shock.

It is estimated that 20–35% of patients have concomitant COPD and heart failure,¹⁰² and differentiating between the two conditions can be difficult because of overlapping symptoms and physical examination findings. Natriuretic peptides can be elevated in COPD as a result of the effects of COPD on the right ventricle.^{103,104} However, orthopnoea and paroxysmal nocturnal dyspnoea are usually more characteristic of heart failure, and elevations of natriuretic peptides are usually more modest than those occurring in the setting of AHF.¹⁰⁵ Pulmonary function testing should be postponed until patients are stable and decongested because congestion may cause an obstructive pattern.¹⁰³ Pulmonary congestion attributable to AHF can also be misdiagnosed as multifocal pneumonia.² Clinical assessment (fever, leukocyte count, sputum, cultures) and imaging with ultrasonography or chest radiography are necessary to obtain a definitive diagnosis. In the ICU setting, pulmonary artery or transpulmonary thermodilution (PiCCO) catheters may provide important information regarding cardiac output, capillary wedge pressure and extravascular lung water (EVLW).⁴⁶ They may be helpful in selected haemodynamically unstable patients in whom the mechanism of deterioration is unknown.¹

Imaging

Chest X-ray—Chest X-ray is widely available and remains a standard component of the AHF evaluation. It can detect pulmonary venous congestion, pleural effusion, interstitial or alveolar oedema, and cardiomegaly, but chest X-ray findings may be normal in up to 20% of patients.^{1,94,106}

Echocardiography—In acute situations, focused transthoracic echocardiography is typically performed and interpreted by clinicians at the bedside, and portable or pocket ultrasound systems can provide similar levels of accuracy.¹⁰⁷

Comprehensive echocardiography provides detailed information about cardiac structure and function.^{108,109} Inferior vena cava diameter may be increased and its respiratory variation suppressed in patients with AHF, findings that support its diagnosis.¹¹⁰ Echocardiography can also provide an estimate of left atrial pressure with mitral valve inflow and left

ventricular tissue Doppler assessments (E/e' ratio). Sonographic assessment includes examination of the lungs and pleural space for detection of pulmonary oedema and pleural effusions.^{111,112} Echocardiography is preferred within 48 h of admission in patients with *de novo* AHF or unknown cardiac function.¹ Immediate echocardiography is necessary in haemodynamically unstable patients or suspected acute life-threatening structural or functional cardiac abnormalities.¹

Lung ultrasound—In dyspnoeic patients presenting to the ED, lung ultrasound is more accurate than auscultation or chest X-ray for the detection of pulmonary congestion in AHF.^{113–116} Lung ultrasound can be performed within 2–5 min using either standard ultrasound equipment or pocket devices^{111,117} with investigation of three or four zones for B-lines on each hemithorax and the presence of pleural effusions laterally.^{112,114} Vertical B-lines provide a graded measure of EVLW (interstitial or alveolar oedema) with high inter-rater reproducibility after a short duration (i.e. 30 min) of training.^{114,118} At least three B-lines in two or more intercostal spaces bilaterally are considered indicative of interstitial or alveolar oedema in the acute care setting.^{111,112,114,117,119} Despite their high accuracy in the identification of pulmonary oedema in patients with suspected AHF, B-lines can also be found in other conditions, such as interstitial lung disease, acute respiratory distress syndrome, pulmonary contusions and pneumonitis.¹¹²

Serial assessment with lung ultrasound may be useful for monitoring treatment effects in patients with AHF.^{119–121} Importantly, hospitalized patients with residual pulmonary congestion at discharge are at risk for subsequent heart failure hospitalizations or death.^{119,122–124}

Biomarkers

Blood and urine biomarkers quantify biochemical signatures that are closely related to organ injury and functional impairment. Well-validated and inexpensive biomarkers are available to quantify injury or impairment of the heart, kidneys or liver and can be used routinely (e.g. natriuretic peptides, cardiac troponin, serum creatinine, cystatin C, albuminuria, blood urea nitrogen, transaminases, coagulation factors, alkaline phosphatase, bilirubin).⁴ Other emerging biomarkers are currently under study (as noted below) and may have future roles.

Natriuretic peptides are recommended for measurement in all patients with acute dyspnoea and suspected AHF.¹ Acute heart failure is unlikely in patients with BNP of <100 pg/mL, NT-proBNP of <300 pg/mL or MR-proANP of <120 pg/mL.¹ Elevated natri-uretic peptide levels may be attributable to other cardiac or non-cardiac causes; results must therefore be interpreted in the clinical context.^{1,125} Further, obesity may lead to falsely low natriuretic peptide levels, and this should be considered when diagnosing or excluding AHF in this cohort.¹²⁶ Procalcitonin levels may aid in the differential diagnosis of pneumonia in patients with AHF and suspected concomitant infection.^{127,128} Other biomarkers (e.g. soluble ST2, galectin-3, GDF-15) may have clinical roles in the future, primarily in prognosis and risk stratification.¹²⁹

Cardiac injury is detected by high-sensitivity cardiac troponin I or T assays. Although patients with AHF and elevated troponin are at higher risk than those with undetectable

troponin,⁹⁴ it is unclear whether any inpatient interventions impact the trajectory of their risk profile (in the absence of acute myocardial infarction).

Kidney injury can be detected and quantified using a combination of urine output and blood biomarkers of renal function (e.g. cystatin C, serum creatinine to calculate estimated GFR, albuminuria, blood urea nitrogen⁶³), or blood and/or urine markers of tubular injury [e.g. neutrophil gelatinase-associated lipocalin (NGAL), pen-enkephalin and KIM-1, although these may not be widely available in clinical practice]. Functional biomarkers have low sensitivity and high specificity, whereas tubular injury markers have high sensitivity and low specificity to detect kidney injury. Several of these markers are elevated in heart failure, both acute and chronic, and are associated with worse survival.^{130,131} However, their ability to predict acute kidney injury has been disappointing, limiting their clinical utility. In AHF, levels of urinary NGAL did not differ between patients with and without worsening renal function,¹³² and the Acute Kidney Injury Neutrophil Gelatinase-Associated Lipocalin Evaluation of Symptomatic Heart Failure Study (AKINE-SIS) showed that plasma NGAL was not superior to creatinine in predicting worsening renal function in patients with AHF.¹³³ These data emphasize that progression from tubular damage to reduced function is incompletely understood.

An acute rise in aspartate aminotransferase (AST) and alanine aminotransferase (ALT) levels signals liver cell necrosis. Coagulation factors reflect actual hepatic synthetic function, especially in acute organ failure, whereas albumin, which has a half-life of 2–3 weeks, represents hepatic synthetic capacity in chronic stable conditions. Alkaline phosphatase, GGT and, to a lesser extent, bilirubin are cholestasis markers. Arterial ammonia may serve as a surrogate marker of hepatic encephalopathy.^{134,135}

Circulating trimethylamine N-oxide (TMAO), a gut-derived metabolite, is associated with AHF and is predictive of death or rehospitalization. Transthyretin (prealbumin) provides prognostic information in combination with the Mini-Nutritional Assessment in patients with AHF.⁸²

Research is ongoing to determine the clinical roles of vascular and endothelial biomarkers such as mid-regional pro-adrenomedullin,¹³⁶ pro-endothelin-1 and endothelin-1.¹³⁷ Recently, circulating CD146 appeared to indicate the level of congestion in AHF.¹³⁸

Clinical management tools in acute heart failure

Supplementary oxygen, non-invasive and invasive ventilation

Patients with AHF should be immediately assessed for respiratory distress in the pre-hospital or ED setting.⁹⁴ Patients with mild acute respiratory failure present with hypoxaemia and/or other mild blood gas abnormalities without signs of respiratory distress and account for nearly 30% of the AHF population.^{98,139} Oxygen therapy is recommended in these patients.^{94,140} Recently, conservative oxygen therapy (SpO₂ targets: 94–98%) proved to be safer than conventional oxygen therapy (SpO₂ targets: 97–100%) in medical ICU patients.¹⁴¹ In acute pulmonary oedema, non-invasive ventilation is superior to conventional oxygen therapy.^{142,143} Continuous positive airway pressure (CPAP) does not

require specialized training and may be administered without a ventilator, which is an advantage in the pre-hospital or ED setting. Meta-analyses have shown evidence that it reduces respiratory distress, endotracheal intubation and even mortality in high-risk patients.^{142–144}

Non-invasive pressure support ventilation applied with positive end expiratory pressure (PEEP) provides inspiratory support and is appropriate in patients with hypercapnia. Expertise and appropriate equipment are necessary to synchronize the patient's inspiratory efforts and the ventilator. Non-invasive pressure support ventilation reduces respiratory distress and the need for endotracheal intubation, but data on its impact on mortality and its superiority in comparison with CPAP are inconclusive.^{145,146} Severe respiratory distress and impending exhaustion may be indications for endotracheal intubation and invasive mechanical ventilation.⁹⁴

In addition to the use of supplementary oxygen and ventilatory support, other means of alleviating dyspnoea and ventilation disorders may be indicated. These include the removal of clinically significant amounts of pleural fluid and administration of inhaled bronchodilators (in COPD and asthma). Opioids have been widely used in this setting, but there are conflicting data on their safety and efficacy.¹⁴⁷

Pharmacological approaches to treating congestion and preventing organ injury

The therapeutic approach to congestion depends on whether vascular-type fluid redistribution or cardiac-type fluid accumulation¹ is the primary cause of the elevated cardiac filling pressures^{148,149} (Figure 2). More than 80% of patients are initially treated homogeneously with i.v. diuretics without consideration of the underlying pathophysiology.^{11,150}

Diuretics—Diuretics are guideline-recommended first-line therapy in ‘wet and warm’ patients in whom congestion is predominantly attributable to fluid accumulation and volume overload.¹ Diuretics are generally ineffective in patients with congestion caused by vascular-type fluid redistribution,¹ generally observed as increased congestion despite a lack of weight gain and predominantly indicated by hypertension. Loop diuretics should be prescribed i.v. at a dose sufficient to achieve meaningful natriuresis, usually 20–40 mg of i.v. furosemide (or equivalent: torasemide 5–10 mg, bumetanide 0.5–1.0 mg¹) in new-onset AHF or at least the oral dose in patients with CHF.^{1,151} Bowel oedema impairs gastrointestinal absorption; therefore, parenteral administration is preferred. Strategies to address inadequate diuresis include the administration of a continuous infusion as an alternative route of administration (e.g. 1–10 mg/h of furosemide or equivalent, depending on the current dose) or additional loop diuretic boluses; these strategies resulted in similar degrees of symptomatic relief and did not differ in terms of adverse effects in the Diuretic Optimization Strategies Evaluation (DOSE) trial.¹⁵¹ Patients respond individually to different strategies and it is reasonable for physicians to tailor the choice of strategy to the specific patient. Combination drug therapy targeting different segments of the nephron [e.g. thiazide (hydrochlorothiazide) and thiazide-like (metolazone),¹⁵² diuretics, mineralocorticoid receptor antagonists or acetazolamide] may be helpful in some patients

with an inadequate natriuretic response to loop diuretics,^{149,153} although strong evidence is lacking.¹ A prospective trial with acetazolamide is currently being planned. Diuretics alleviate congestion by decreasing cardiac filling pressure without increasing ventricular contractility or cardiac output. High diuretic doses may decrease renal blood flow and GFR by activating the renin–angiotensin–aldosterone system (RAAS) and/or sympathetic nervous system,^{154–156} although recent studies in patients on guideline-directed therapy question whether the RAAS is activated to a significant extent.¹⁵⁷ Tubuloglomerular feedback may also play a role,¹⁵⁸ whereby increased sodium chloride reabsorption by the macula densa results in adenosine release and increased renin activity, leading to afferent arteriole vasoconstriction and a decrease in single nephron GFR.^{159,160}

Vasodilators—Vasodilators may be used as first-line therapy to unload the heart and increase venous capacitance in patients with AHF and hypertensive, vascular-type fluid redistribution.^{1,57,149} Vasodilators improve ventricular function by reducing afterload and decrease symptoms by reducing cardiac filling pressure.¹ Nitrates (e.g. nitroglycerin, nitroprusside) are direct-acting vasodilators and are used most frequently. They have not been evaluated in adequately powered studies specifically targeting the ‘wet and warm’ phenotype; thus, they have not been shown to improve clinical outcomes.¹⁶¹ Care should be taken to avoid hypotension.

Serelaxin was studied in the Relaxin in Acute Heart Failure (RELAX-AHF) trial and was found to improve dyspnoea in comparison with the placebo plus standard of care arm.¹⁶² As recently presented during the HFA 2017 Congress, RELAX-AHF-2, a phase 3 study, was neutral regarding the co-primary endpoints, and publication of the results will be forthcoming.

Ularitide was studied in the Trial of Ularitide’s Efficacy and Safety in Patients with Acute Heart Failure (TRUE-AHF).¹⁶³ At 48 h, ularitide decreased NT-proBNP and systolic blood pressure to a greater extent than placebo, and other evidence of intravascular decongestion was observed (significant increases in haemoglobin and serum creatinine and decreases in hepatic transaminases compared with placebo). No difference between groups was observed in the co-primary endpoints of clinical composite score at 48 h or cardiovascular mortality over a median follow-up of 15 months.¹⁶³

Vasopressors, inotropes and inodilators—Inotropes (e.g. dobutamine), inodilators (e.g. levosimendan, milrinone) and vasopressors (norepinephrine is preferred over dopamine based on a subgroup analysis that suggested fewer side effects and lower mortality with norepinephrine, as noted in heart failure guidelines^{1,164}) should only be used when cardiac output is severely reduced, vital organ perfusion is compromised, filling pressures are normal or high, and patients cannot be stabilized by other means^{1,94} because of their associations with increased mortality.^{165,166} Recent evidence suggests that epinephrine should be avoided in cardiogenic shock.¹⁶⁷

Organ-specific management options

Heart—Current guidelines for heart failure suggest the use of short-term mechanical circulatory support should be considered in patients who remain unstable with insufficient

end-organ perfusion despite medical therapy.¹ An intra-aortic balloon pump is not routinely recommended in cardiogenic shock.⁹⁴ A device selection strategy [i.e. extracorporeal membrane oxygenation (ECMO), extracorporeal life support (ECLS), left ventricular assist device (LVAD)] based on severity [i.e. Interagency Registry for Mechanically Assisted Circulatory Support (INTERMACS) criteria] is outlined in the ESC heart failure guidelines.¹

Kidney—Treatment of venous congestion may prevent or minimize kidney injury in AHF.^{52–54} The therapeutic goal is to achieve the lowest venous filling pressures without deteriorating cardiac output. Ultrafiltration may be considered in patients in whom decongestion goals are not met with vasodilators or loop diuretics.¹ Data are inconclusive for the effectiveness of ultrafiltration compared with diuretics alone.^{168–170} Inotropes may be considered in patients with deteriorating cardiac output and renal perfusion in the setting of decongestion. Nephrotoxic agents and procedures should be avoided during the AHF presentation.

Liver—Liver-specific management involves appropriate supportive treatment for the problems induced by liver impairment or failure (e.g. coagulopathy, hypoglycaemia, hypoalbuminaemia, hepatopulmonary syndrome),^{171–176} but these are not specific to patients with AHF. Liver impairment can impact the pharmacokinetics of some drugs commonly used in heart failure, potentially leading to adverse effects or toxicity caused by elevated serum concentrations of some drugs (e.g. warfarin).

Intestine—Few interventions target gut protection in the setting of AHF.⁷⁹ In addition to loop diuretics and vasodilators, paracentesis in patients with ascites and elevated intra-abdominal pressure (>8 mmHg), or ultrafiltration may be strategies to consider in specific patients.^{21,177–179}

Gaps in knowledge and future directions

Defining adequate endpoints of decongestion is a major clinical challenge of managing patients with AHF. Change in body weight is often used as a guide, but this approach is frequently inadequate as body weight is not increased in all patients and does not reflect congestion caused by vascular-type fluid redistribution. Evidence-based clinical and biochemical indicators of adequate decongestion are lacking; thus, vasodilator or diuretic dose adjustments are largely empirical. Developing reliable criteria and accurate methods for assessing the extent of congestion and determining optimal decongestion are crucial unmet needs because persistent congestion is a marker of worse prognosis after discharge.¹⁸⁰ Point-of-care imaging may have potential, primarily for the evaluation of pulmonary congestion. Novel, effective and safe pharmacological or mechanical methods to achieve decongestion are needed. The patterns of congestion in AHF with preserved ejection fraction are not well characterized and warrant investigation, although the available evidence suggests that patients with heart failure from reduced or preserved ejection fraction have similar characteristics of congestion at presentation (e.g. oedema, orthopnoea, elevated jugular venous pressure, dyspnoea on exertion).¹⁸¹

Organ-specific injury markers suitable for clinical practice are lacking for many organs (e.g. brain, lung, intestine, endothelium, vasculature). Injury markers for these organs would be valuable, along with evidence-based recommendations for monitoring, leading to possible intervention strategies. Even where organ-specific injury markers exist (e.g. cardiac troponin, markers of renal or hepatic injury), research is needed to guide their interpretation. The clinical progression of organ injury to dysfunction and ultimately failure is not well characterized and the extent to which injury and dysfunction are reversible or irreversible in the setting of AHF is not known. The clinical importance of low levels of detectable troponin is not well understood and whether or not treatments that target troponins alter risk is unknown. The same is true for novel prognostic markers such as mid-region adrenomedullin and soluble ST2. It remains uncertain whether decongestion targeting reduction in traditional markers of heart failure (i.e. natriuretic peptides) is more beneficial than clinical guidance.¹⁸² More research is needed to establish the appropriate pathway (i.e. discharge or further evaluation) in otherwise stable patients with persistently elevated biomarkers.

The treatment of pulmonary oedema remains largely opinion-based as there is a general lack of robust evidence to guide therapy. Similarly, although small studies suggest that vasodilators are preferable as first-line therapy in AHF patients with hypertension, a definitive trial testing this strategy is required to fill this evidence void. Furthermore, no therapy has shown simultaneous benefits in symptomatic relief, haemodynamic improvement, increased survival and end-organ protection.¹⁸³ New methods such as thoracic impedance monitoring have been used to detect pulmonary oedema in the research setting.¹⁸⁴

The concept that treatment of congestion can reduce or prevent organ injury needs to be tested in randomized trials, and the effects of preventing organ injury on morbidity, survival and health economics require validation. Whether regulators will accept prevention of organ injury as an endpoint in AHF trials remains to be determined; adequate reassurance of safety (i.e. in terms of mortality) would also need to be demonstrated. Engagement with payers is needed to determine their attitudes towards such an endpoint. It is reasonable to consider that payers may be supportive of therapies that prevent organ injury if their use leads to shorter ICU or overall hospital stays, decreases short-term readmissions or reduces the need for other interventions (e.g. haemodialysis, mechanical circulatory support), but this evidence must be generated.

Conclusions

Managing patients with AHF remains a clinical challenge and current therapies have uncertain impacts on long-term morbidity and mortality. The use of therapies that prevent or reverse congestion-induced organ injury may represent a strategy to reduce subsequent organ impairment and morbidity that is more successful than the traditional approach of targeting dyspnoea relief. Although much has been learned about the role of congestion in promoting organ injury, future research efforts should focus on defining the specific pathophysiological mechanisms through which congestion leads to organ injury, determine whether

decongestive therapies can prevent or reverse organ impairment, and evaluate the impact of an organ-preserving strategy on long-term clinical outcomes.

Acknowledgments

The authors acknowledge the Heart Failure Association (HFA) of the European Society of Cardiology (ESC) for organizing the meeting (Workshop on Organ Failure in Acute Heart Failure, 10–11 March 2016, Brussels, Belgium) at which this topic was discussed.

The authors thank Wendy Gattis Stough, PharmD (Campbell University College of Pharmacy and Health Sciences, Buies Creek, NC, USA), supported by the HFA of the ESC, for contributions to the development of content, writing and editing of this manuscript.

Funding

This work was supported by the Heart Failure Association of the European Society of Cardiology.

References

1. Ponikowski P, Voors AA, Anker SD, Bueno H, Cleland JG, Coats AJ, Falk V, Gonzalez-Juanatey JR, Harjola VP, Jankowska EA, Jessup M, Linde C, Nihoy-annopoulos P, Parissis JT, Pieske B, Riley JP, Rosano GM, Ruilope LM, Ruschitzka F, Rutten FH, van der Meer P. 2016 ESC Guidelines for the diagnosis and treatment of acute and chronic heart failure: the Task Force for the diagnosis and treatment of acute and chronic heart failure of the European Society of Cardiology (ESC). Developed with the special contribution of the Heart Failure Association (HFA) of the ESC. *Eur J Heart Fail.* 2016; 18:891–975. [PubMed: 27207191]
2. Nieminen MS, Brutsaert D, Dickstein K, Drexler H, Follath F, Harjola VP, Hochadel M, Komajda M, Lassus J, Lopez-Sendon JL, Ponikowski P, Tavazzi L. EuroHeart Failure Survey II (EHFS II): a survey on hospitalized acute heart failure patients: description of population. *Eur Heart J.* 2006; 27:2725–2736. [PubMed: 17000631]
3. Rudiger A, Harjola VP, Muller A, Mattila E, Salla P, Nieminen M, Follath F. Acute heart failure: clinical presentation, one-year mortality and prognostic factors. *Eur J Heart Fail.* 2005; 7:662–670. [PubMed: 15921809]
4. Metra M, Cotter G, Davison BA, Felker GM, Filippatos G, Greenberg BH, Ponikowski P, Unemori E, Voors AA, Adams KF Jr, Dorobantu MI, Grinfeld L, Jondeau G, Marmor A, Masip J, Pang PS, Werdan K, Prescott MF, Edwards C, Teichman SL, Trapani A, Bush CA, Saini R, Schumacher C, Severin T, Teerlink JR. Effect of serelaxin on cardiac, renal, and hepatic biomarkers in the Relaxin in Acute Heart Failure (RELAX-AHF) development program: correlation with outcomes. *J Am Coll Cardiol.* 2013; 61:196–206. [PubMed: 23273292]
5. Mebazaa A, Longrois D, Metra M, Mueller C, Richards AM, Roessig L, Seronde MF, Sato N, Stockbridge NL, Gattis SW, Alonso A, Cody RJ, Cook BN, Gheorghide M, Holzmeister J, Laribi S, Zannad F. Agents with vasodilator properties in acute heart failure: how to design successful trials. *Eur J Heart Fail.* 2015; 17:652–664. [PubMed: 26040488]
6. Ambrosy AP, Fonarow GC, Butler J, Chioncel O, Greene SJ, Vaduganathan M, Nodari S, Lam CS, Sato N, Shah AN, Gheorghide M. The global health and economic burden of hospitalizations for heart failure: lessons learned from hospitalized heart failure registries. *J Am Coll Cardiol.* 2014; 63:1123–1133. [PubMed: 24491689]
7. Nikolaou M, Parissis J, Yilmaz MB, Seronde MF, Kivikko M, Laribi S, Paugam-Burtz C, Cai D, Pohjanjousi P, Laterre PF, Deye N, Poder P, Cohen-Solal A, Mebazaa A. Liver function abnormalities, clinical profile, and outcome in acute decompensated heart failure. *Eur Heart J.* 2013; 34:742–749. [PubMed: 23091203]
8. Ronco C, Haapio M, House AA, Anavekar N, Bellomo R. Cardiorenal syndrome. *J Am Coll Cardiol.* 2008; 52:1527–1539. [PubMed: 19007588]
9. Ronco C, McCullough P, Anker SD, Anand I, Aspromonte N, Bagshaw SM, Bellomo R, Berl T, Bobek I, Cruz DN, Daliento L, Davenport A, Haapio M, Hillege H, House AA, Katz N, Maisel A, Mankad S, Zanco P, Mebazaa A, Palazzuoli A, Ronco F, Shaw A, Sheinfeld G, Soni S, Vescovo G,

- Zamperetti N, Ponikowski P. Cardiorenal syndromes: report from the consensus conference of the acute dialysis quality initiative. *Eur Heart J*. 2010; 31:703–711. [PubMed: 20037146]
10. Marik PE, Baram M, Vahid B. Does central venous pressure predict fluid responsiveness? A systematic review of the literature and the tale of seven mares. *Chest*. 2008; 134:172–178. [PubMed: 18628220]
 11. Adams KF Jr, Fonarow GC, Emerman CL, LeJemtel TH, Costanzo MR, Abraham WT, Berkowitz RL, Galvao M, Horton DP. Characteristics and outcomes of patients hospitalized for heart failure in the United States: rationale, design, and preliminary observations from the first 100,000 cases in the Acute Decompensated Heart Failure National Registry (ADHERE). *Am Heart J*. 2005; 149:209–216. [PubMed: 15846257]
 12. Adamson PB, Magalski A, Braunschweig F, Bohm M, Reynolds D, Steinhaus D, Luby A, Linde C, Ryden L, Cremers B, Takle T, Bennett T. Ongoing right ventricular hemodynamics in heart failure: clinical value of measurements derived from an implantable monitoring system. *J Am Coll Cardiol*. 2003; 41:565–571. [PubMed: 12598066]
 13. Zile MR, Bennett TD, St John SM, Cho YK, Adamson PB, Aaron MF, Aranda JM Jr, Abraham WT, Smart FW, Stevenson LW, Kueffer FJ, Bourge RC. Transition from chronic compensated to acute decompensated heart failure: pathophysiological insights obtained from continuous monitoring of intracardiac pressures. *Circulation*. 2008; 118:1433–1441. [PubMed: 18794390]
 14. Chaudhry SI, Wang Y, Concato J, Gill TM, Krumholz HM. Patterns of weight change preceding hospitalization for heart failure. *Circulation*. 2007; 116:1549–1554. [PubMed: 17846286]
 15. Mehta RH, Rogers JG, Hasselblad V, Tasissa G, Binanay C, Califf RM, O'Connor CM. Association of weight change with subsequent outcomes in patients hospitalized with acute decompensated heart failure. *Am J Cardiol*. 2009; 103:76–81. [PubMed: 19101234]
 16. Fallick C, Sobotka PA, Dunlap ME. Sympathetically mediated changes in capacitance: redistribution of the venous reservoir as a cause of decompensation. *Circ Heart Fail*. 2011; 4:669–675. [PubMed: 21934091]
 17. Mullens W, Abrahams Z, Skouri HN, Francis GS, Taylor DO, Starling RC, Paganini E, Tang WH. Elevated intra-abdominal pressure in acute decompensated heart failure: a potential contributor to worsening renal function? *J Am Coll Cardiol*. 2008; 51:300–306. [PubMed: 18206740]
 18. Verbrugge FH, Dupont M, Steels P, Grieten L, Malbrain M, Tang WH, Mullens W. Abdominal contributions to cardiorenal dysfunction in congestive heart failure. *J Am Coll Cardiol*. 2013; 62:485–495. [PubMed: 23747781]
 19. Chioncel O, Ambrosy AP, Bubenek S, Filipescu D, Vinereanu D, Petris A, Christodorescu R, Macarie C, Gheorghide M, Collins SP. Epidemiology, pathophysiology, and in-hospital management of pulmonary edema: data from the Romanian Acute Heart Failure Syndromes registry. *J Cardiovasc Med (Hagerstown)*. 2016; 17:92–104. [PubMed: 25252041]
 20. Hainsworth R, Karim F. Changes in abdominal vascular capacity in response to stimulation of efferent sympathetic nerves. *J Physiol*. 1974; 239:26P–27P.
 21. Mullens W, Abrahams Z, Francis GS, Taylor DO, Starling RC, Tang WH. Prompt reduction in intra-abdominal pressure following large-volume mechanical fluid removal improves renal insufficiency in refractory decompensated heart failure. *J Card Fail*. 2008; 14:508–514. [PubMed: 18672199]
 22. Aissaoui N, Puymirat E, Tabone X, Charbonnier B, Schiele F, Lefevre T, Durand E, Blanchard D, Simon T, Cambou JP, Danchin N. Improved outcome of cardiogenic shock at the acute stage of myocardial infarction: a report from the USIK 1995, USIC 2000, and FAST-MI French nationwide registries. *Eur Heart J*. 2012; 33:2535–2543. [PubMed: 22927559]
 23. Kolte D, Khera S, Aronow WS, Mujib M, Palaniswamy C, Sule S, Jain D, Gotsis W, Ahmed A, Frishman WH, Fonarow GC. Trends in incidence, management, and outcomes of cardiogenic shock complicating ST-elevation myocardial infarction in the United States. *J Am Heart Assoc*. 2014; 3:e000590. [PubMed: 24419737]
 24. Gheorghide M, Follath F, Ponikowski P, Barsuk JH, Blair JE, Cleland JG, Dickstein K, Drazner MH, Fonarow GC, Jaarsma T, Jondeau G, Sendon JL, Mebazaa A, Metra M, Nieminen M, Pang PS, Seferovic P, Stevenson LW, van Veldhuisen DJ, Zannad F, Anker SD, Rhodes A, McMurray JJ, Filippatos G. Assessing and grading congestion in acute heart failure: a scientific statement from the Acute Heart Failure Committee of the Heart Failure Association of the European Society of

- Cardiology and endorsed by the European Society of Intensive Care Medicine. *Eur J Heart Fail.* 2010; 12:423–433. [PubMed: 20354029]
25. Harjola VP, Lassus J, Sionis A, Kober L, Tarvasmaki T, Spinar J, Parissis J, Banaszewski M, Silva-Cardoso J, Carubelli V, Di SS, Tolppanen H, Zeymer U, Thiele H, Nieminen MS, Mebazaa A. Clinical picture and risk prediction of short-term mortality in cardiogenic shock. *Eur J Heart Fail.* 2015; 17:501–509. [PubMed: 25820680]
 26. Rudiger A. Understanding cardiogenic shock. *Eur J Heart Fail.* 2015; 17:466–467. [PubMed: 25858545]
 27. Calfee CS, Matthay MA. Clinical immunology: culprits with evolutionary ties. *Nature.* 2010; 464:41–42. [PubMed: 20203598]
 28. Hochman JS. Cardiogenic shock complicating acute myocardial infarction: expanding the paradigm. *Circulation.* 2003; 107:2998–3002. [PubMed: 12821585]
 29. Nijst P, Verbrugge FH, Grieten L, Dupont M, Steels P, Tang WH, Mullens W. The pathophysiological role of interstitial sodium in heart failure. *J Am Coll Cardiol.* 2015; 65:378–388. [PubMed: 25634838]
 30. Marti CN, Gheorghide M, Kalogeropoulos AP, Georgiopoulou VV, Quyyumi AA, Butler J. Endothelial dysfunction, arterial stiffness, and heart failure. *J Am Coll Cardiol.* 2012; 60:1455–1469. [PubMed: 22999723]
 31. Flammer AJ, Anderson T, Celermajer DS, Creager MA, Deanfield J, Ganz P, Hamburg NM, Luscher TF, Shechter M, Taddei S, Vita JA, Lerman A. The assessment of endothelial function: from research into clinical practice. *Circulation.* 2012; 126:753–767. [PubMed: 22869857]
 32. Gutierrez E, Flammer AJ, Lerman LO, Elizaga J, Lerman A, Fernandez-Aviles F. Endothelial dysfunction over the course of coronary artery disease. *Eur Heart J.* 2013; 34:3175–3181. [PubMed: 24014385]
 33. Katz SD, Hryniewicz K, Hriljac I, Balidemaj K, Dimayuga C, Hudaihed A, Yasskiy A. Vascular endothelial dysfunction and mortality risk in patients with chronic heart failure. *Circulation.* 2005; 111:310–314. [PubMed: 15655134]
 34. Shechter M, Matetzky S, Arad M, Feinberg MS, Freimark D. Vascular endothelial function predicts mortality risk in patients with advanced ischaemic chronic heart failure. *Eur J Heart Fail.* 2009; 11:588–593. [PubMed: 19406838]
 35. Parrinello G, Greene SJ, Torres D, Alderman M, Bonventre JV, Di PP, Gargani L, Nohria A, Fonarow GC, Vaduganathan M, Butler J, Paterna S, Stevenson LW, Gheorghide M. Water and sodium in heart failure: a spotlight on congestion. *Heart Fail Rev.* 2015; 20:13–24. [PubMed: 24942806]
 36. Volpe M, Carnovali M, Mastromarino V. The natriuretic peptides system in the pathophysiology of heart failure: from molecular basis to treatment. *Clin Sci (Lond).* 2016; 130:57–77. [PubMed: 26637405]
 37. Januzzi JL Jr, Filippatos G, Nieminen M, Gheorghide M. Troponin elevation in patients with heart failure: on behalf of the third Universal Definition of Myocardial Infarction Global Task Force: Heart Failure Section. *Eur Heart J.* 2012; 33:2265–2271. [PubMed: 22745356]
 38. Collins SP, Jenkins CA, Harrell FE Jr, Liu D, Miller KF, Lindsell CJ, Naftilan AJ, McPherson JA, Maron DJ, Sawyer DB, Weintraub NL, Fermann GJ, Roll SK, Sperling M, Storrow AB. Identification of emergency department patients with acute heart failure at low risk for 30-day adverse events: the STRATIFY Decision Tool. *JACC Heart Fail.* 2015; 3:737–747. [PubMed: 26449993]
 39. Thygesen K, Alpert JS, Jaffe AS, Simoons ML, Chaitman BR, White HD, Thygesen K, Alpert JS, White HD, Jaffe AS, Katus HA, Apple FS, Lindahl B, Morrow DA, Chaitman BA, Clemmensen PM, Johanson P, Hod H, Underwood R, Bax JJ, Bonow RO, Pinto F, Gibbons RJ, Fox KA, Atar D, Newby LK, Galvani M, Hamm CW, Uretsky BF, Steg PG, Wijns W, Bassand JP, Menasche P, Ravkilde J, Ohman EM, Antman EM, Wallentin LC, Armstrong PW, Simoons ML, Januzzi JL, Nieminen MS, Gheorghide M, Filippatos G, Luepker RV, Fortmann SP, Rosamond WD, Levy D, Wood D, Smith SC, Hu D, Lopez-Sendon JL, Robertson RM, Weaver D, Tendera M, Bove AA, Parkhomenko AN, Vasilieva EJ, Mendis S. Third universal definition of myocardial infarction. *Eur Heart J.* 2012; 33:2551–2567. [PubMed: 22922414]

40. Felker GM, Mentz RJ, Teerlink JR, Voors AA, Pang PS, Ponikowski P, Greenberg BH, Filippatos G, Davison BA, Cotter G, Prescott MF, Hua TA, Lopez-Pintado S, Severin T, Metra M. Serial high sensitivity cardiac troponin T measurement in acute heart failure: insights from the RELAX-AHF study. *Eur J Heart Fail.* 2015; 17:1262–1270. [PubMed: 26333655]
41. Pang PS, Teerlink JR, Voors AA, Ponikowski P, Greenberg BH, Filippatos G, Felker GM, Davison BA, Cotter G, Kriger J, Prescott MF, Hua TA, Severin T, Metra M. Use of high-sensitivity troponin t to identify patients with acute heart failure at lower risk for adverse outcomes: an exploratory analysis from the RELAX-AHF Trial. *JACC Heart Fail.* 2016; 4:591–599. [PubMed: 27039129]
42. Ware LB, Matthay MA. Clinical practice. Acute pulmonary edema. *N Engl J Med.* 2005; 353:2788–2796. [PubMed: 16382065]
43. Scherrer U, Rexhaj E, Jayet PY, Allemann Y, Sartori C. New insights in the pathogenesis of high-altitude pulmonary edema. *Prog Cardiovasc Dis.* 2010; 52:485–492. [PubMed: 20417341]
44. Busl KM, Bleck TP. Neurogenic pulmonary edema. *Crit Care Med.* 2015; 43:1710–1715. [PubMed: 26066018]
45. Miyazawa R, Morita Y, Okajima Y, Matsusako M, Kurihara Y. Marathon-induced pulmonary edema of a patient with transient dyspnea. *Jpn J Radiol.* 2015; 33:675–677. [PubMed: 26324381]
46. Ritter S, Rudiger A, Maggiorini M. Transpulmonary thermodilution-derived cardiac function index identifies cardiac dysfunction in acute heart failure and septic patients: an observational study. *Crit Care.* 2009; 13:R133. [PubMed: 19671146]
47. Guazzi M, Phillips SA, Arena R, Lavie CJ. Endothelial dysfunction and lung capillary injury in cardiovascular diseases. *Prog Cardiovasc Dis.* 2015; 57:454–462. [PubMed: 25446556]
48. Guglin M, Khan H. Pulmonary hypertension in heart failure. *J Card Fail.* 2010; 16:461–474. [PubMed: 20610227]
49. Agostoni P, Cattadori G, Bussotti M, Apostolo A. Cardiopulmonary interaction in heart failure. *Pulm Pharmacol Ther.* 2007; 20:130–134. [PubMed: 16702004]
50. Tanabe T, Rozycki HJ, Kanoh S, Rubin BK. Cardiac asthma: new insights into an old disease. *Expert Rev Respir Med.* 2012; 6:705–714. [PubMed: 23234454]
51. Damman K, Valente MA, Voors AA, O'Connor CM, van Veldhuisen DJ, Hillege HL. Renal impairment, worsening renal function, and outcome in patients with heart failure: an updated meta-analysis. *Eur Heart J.* 2014; 35:455–469. [PubMed: 24164864]
52. Mullens W, Abrahams Z, Francis GS, Sokos G, Taylor DO, Starling RC, Young JB, Tang WH. Importance of venous congestion for worsening of renal function in advanced decompensated heart failure. *J Am Coll Cardiol.* 2009; 53:589–596. [PubMed: 19215833]
53. Nohria A, Tsang SW, Fang JC, Lewis EF, Jarcho JA, Mudge GH, Stevenson LW. Clinical assessment identifies hemodynamic profiles that predict outcomes in patients admitted with heart failure. *J Am Coll Cardiol.* 2003; 41:1797–1804. [PubMed: 12767667]
54. Mullens W, Nijst P. Cardiac output and renal dysfunction: definitely more than impaired flow. *J Am Coll Cardiol.* 2016; 67:2209–2212. [PubMed: 27173031]
55. Hanberg JS, Sury K, Wilson FP, Brisco MA, Ahmad T, ter Maaten JM, Broughton JS, Assefa M, Tang WH, Parikh CR, Testani JM. Reduced cardiac index is not the dominant driver of renal dysfunction in heart failure. *J Am Coll Cardiol.* 2016; 67:2199–2208. [PubMed: 27173030]
56. Legrand M, Mebazaa A, Ronco C, Januzzi JL Jr. When cardiac failure, kidney dysfunction, and kidney injury intersect in acute conditions: the case of cardiorenal syndrome. *Crit Care Med.* 2014; 42:2109–2117. [PubMed: 24810531]
57. Ishihara S, Gayat E, Sato N, Arrigo M, Laribi S, Legrand M, Placido R, Manivet P, Cohen-Solal A, Abraham WT, Jessup M, Mebazaa A. Similar hemodynamic decongestion with vasodilators and inotropes: systematic review, meta-analysis, and meta-regression of 35 studies on acute heart failure. *Clin Res Cardiol.* 2016; 105:971–980. [PubMed: 27314418]
58. Kidney Disease Improving Global Outcomes (KDIGO) Working Group. KDIGO clinical practice guidelines for acute kidney injury. *Kidney Int Suppl.* 2012; 2:1–138.
59. Hsu CY, Ordonez JD, Chertow GM, Fan D, McCulloch CE, Go AS. The risk of acute renal failure in patients with chronic kidney disease. *Kidney Int.* 2008; 74:101–107. [PubMed: 18385668]
60. Metra M, Nodari S, Parrinello G, Bordonali T, Bugatti S, Danesi R, Fontanella B, Lombardi C, Milani P, Verzura G, Cotter G, Dittrich H, Massie BM, Dei CL. Worsening renal function in

patients hospitalised for acute heart failure: clinical implications and prognostic significance. *Eur J Heart Fail.* 2008; 10:188–195. [PubMed: 18279773]

61. Lassus JP, Nieminen MS, Peuhkurinen K, Pulkki K, Siirila-Waris K, Sund R, Harjola VP. Markers of renal function and acute kidney injury in acute heart failure: definitions and impact on outcomes of the cardiorenal syndrome. *Eur Heart J.* 2010; 31:2791–2798. [PubMed: 20801926]
62. Damman K, Tang WH, Testani JM, McMurray JJ. Terminology and definition of changes in renal function in heart failure. *Eur Heart J.* 2014; 35:3413–3416. [PubMed: 25157110]
63. Damman K, Testani JM. The kidney in heart failure: an update. *Eur Heart J.* 2015; 36:1437–1444. [PubMed: 25838436]
64. Valente MA, Voors AA, Damman K, van Veldhuisen DJ, Massie BM, O'Connor CM, Metra M, Ponikowski P, Teerlink JR, Cotter G, Davison B, Cleland JG, Givertz MM, Bloomfield DM, Fiuzat M, Dittrich HC, Hillege HL. Diuretic response in acute heart failure: clinical characteristics and prognostic significance. *Eur Heart J.* 2014; 35:1284–1293. [PubMed: 24585267]
65. Testani JM, Chen J, McCauley BD, Kimmel SE, Shannon RP. Potential effects of aggressive decongestion during the treatment of decompensated heart failure on renal function and survival. *Circulation.* 2010; 122:265–272. [PubMed: 20606118]
66. Brisco MA, Zile MR, Hanberg JS, Wilson FP, Parikh CR, Coca SG, Tang WH, Testani JM. Relevance of changes in serum creatinine during a heart failure trial of decongestive strategies: insights from the DOSE Trial. *J Card Fail.* 2016; 22:753–760. [PubMed: 27374839]
67. Ambrosy AP, Vaduganathan M, Huffman MD, Khan S, Kwasny MJ, Fought AJ, Maggioni AP, Swedberg K, Konstam MA, Zannad F, Gheorghiade M. Clinical course and predictive value of liver function tests in patients hospitalized for worsening heart failure with reduced ejection fraction: an analysis of the EVEREST trial. *Eur J Heart Fail.* 2012; 14:302–311. [PubMed: 22357577]
68. Auer J. What does the liver tell us about the failing heart? *Eur Heart J.* 2013; 34:711–714. [PubMed: 23257947]
69. Biegus J, Hillege HL, Postmus D, Valente MA, Bloomfield DM, Cleland JG, Cotter G, Davison BA, Dittrich HC, Fiuzat M, Givertz MM, Massie BM, Metra M, Teerlink JR, Voors AA, O'Connor CM, Ponikowski P. Abnormal liver function tests in acute heart failure: relationship with clinical characteristics and outcome in the PROTECT study. *Eur J Heart Fail.* 2016; 18:830–839. [PubMed: 27170455]
70. Drolz A, Horvatits T, Roedl K, Rutter K, Staufer K, Haider DG, Zauner C, Heinz G, Schellongowski P, Kluge S, Trauner M, Fuhrmann V. Outcome and features of acute kidney injury complicating hypoxic hepatitis at the medical intensive care unit. *Ann Intensive Care.* 2016; 6:61. [PubMed: 27392655]
71. Kim MS, Kato TS, Farr M, Wu C, Givens RC, Collado E, Mancini DM, Schulze PC. Hepatic dysfunction in ambulatory patients with heart failure: application of the MELD scoring system for outcome prediction. *J Am Coll Cardiol.* 2013; 61:2253–2261. [PubMed: 23563127]
72. Poelzl G, Ess M, von der Heide A, Rudnicki M, Frick M, Ulmer H. Concomitant renal and hepatic dysfunctions in chronic heart failure: clinical implications and prognostic significance. *Eur J Intern Med.* 2013; 24:177–182. [PubMed: 23266236]
73. Parissis JT, Farmakis D, Andreoli C, Rafouli-Stergiou P, Ambrosio G, Anastasiou-Nana M, Filippatos G. Cardio-reno-hepatic interactions in acute heart failure: the role of γ -glutamyl transferase. *Int J Cardiol.* 2014; 173:556–557. [PubMed: 24698228]
74. Moller S, Bernardi M. Interactions of the heart and the liver. *Eur Heart J.* 2013; 34:2804–2811. [PubMed: 23853073]
75. Samsky MD, Patel CB, DeWald TA, Smith AD, Felker GM, Rogers JG, Hernandez AF. Cardiohepatic interactions in heart failure: an overview and clinical implications. *J Am Coll Cardiol.* 2013; 61:2397–2405. [PubMed: 23603231]
76. Whitehead MW, Hawkes ND, Hainsworth I, Kingham JG. A prospective study of the causes of notably raised aspartate aminotransferase of liver origin. *Gut.* 1999; 45:129–133. [PubMed: 10369716]
77. Fuhrmann V, Kneidinger N, Herkner H, Heinz G, Nikfardjam M, Bojic A, Schellongowski P, Angermayr B, Kitzberger R, Warszawska J, Holzinger U, Schenk P, Madl C. Hypoxic hepatitis:

- underlying conditions and risk factors for mortality in critically ill patients. *Intensive Care Med.* 2009; 35:1397–1405. [PubMed: 19506833]
78. Fuhrmann V, Kneidinger N, Herkner H, Heinz G, Nikfardjam M, Bojic A, Schellongowski P, Angermayr B, Schoniger-Hekele M, Madl C, Schenk P. Impact of hypoxic hepatitis on mortality in the intensive care unit. *Intensive Care Med.* 2011; 37:1302–1310. [PubMed: 21647720]
 79. Rogler G, Rosano G. The heart and the gut. *Eur Heart J.* 2014; 35:426–430. [PubMed: 23864132]
 80. Sandek A, Bauditz J, Swidsinski A, Buhner S, Weber-Eibel J, von Haehling S, Schroedl W, Karhausen T, Doehner W, Rauchhaus M, Poole-Wilson P, Volk HD, Lochs H, Anker SD. Altered intestinal function in patients with chronic heart failure. *J Am Coll Cardiol.* 2007; 50:1561–1569. [PubMed: 17936155]
 81. Valentova M, von Haehling S, Bauditz J, Doehner W, Ebner N, Bekfani T, Elsner S, Sliziuk V, Scherbakov N, Murin J, Anker SD, Sandek A. Intestinal congestion and right ventricular dysfunction: a link with appetite loss, inflammation, and cachexia in chronic heart failure. *Eur Heart J.* 2016; 37:1684–1691. [PubMed: 26865478]
 82. Suzuki N, Kida K, Suzuki K, Harada T, Akashi YJ. Assessment of transthyretin combined with mini nutritional assessment on admission provides useful prognostic information in patients with acute decompensated heart failure. *Int Heart J.* 2015; 56:226–233. [PubMed: 25740580]
 83. Levin SN, Hajduk AM, McManus DD, Darling CE, Gurwitz JH, Spencer FA, Goldberg RJ, Saczynski JS. Cognitive status in patients hospitalized with acute decompensated heart failure. *Am Heart J.* 2014; 168:917–923. [PubMed: 25458656]
 84. Leto L, Feola M. Cognitive impairment in heart failure patients. *J Geriatr Cardiol.* 2014; 11:316–328. [PubMed: 25593581]
 85. Sokoreli I, de Vries JJ, Pauws SC, Steyerberg EW. Depression and anxiety as predictors of mortality among heart failure patients: systematic review and meta-analysis. *Heart Fail Rev.* 2016; 21:49–63. [PubMed: 26572543]
 86. Rutledge T, Reis VA, Linke SE, Greenberg BH, Mills PJ. Depression in heart failure: a meta-analytic review of prevalence, intervention effects, and associations with clinical outcomes. *J Am Coll Cardiol.* 2006; 48:1527–1537. [PubMed: 17045884]
 87. Davis KK, Mintzer M, Dennison Himmelfarb CR, Hayat MJ, Rotman S, Allen J. Targeted intervention improves knowledge but not self-care or readmissions in heart failure patients with mild cognitive impairment. *Eur J Heart Fail.* 2012; 14:1041–1049. [PubMed: 22736737]
 88. Inouye SK, Rushing JT, Foreman MD, Palmer RM, Pompei P. Does delirium contribute to poor hospital outcomes? A three-site epidemiologic study. *J Gen Intern Med.* 1998; 13:234–242. [PubMed: 9565386]
 89. Kindermann I, Fischer D, Karbach J, Link A, Walenta K, Barth C, Ukena C, Mahfoud F, Kollner V, Kindermann M, Bohm M. Cognitive function in patients with decompensated heart failure: the Cognitive Impairment in Heart Failure (CogImpair-HF) study. *Eur J Heart Fail.* 2012; 14:404–413. [PubMed: 22431406]
 90. Uthamalingam S, Gurm GS, Daley M, Flynn J, Capodilupo R. Usefulness of acute delirium as a predictor of adverse outcomes in patients >65 years of age with acute decompensated heart failure. *Am J Cardiol.* 2011; 108:402–408. [PubMed: 21757045]
 91. Inouye SK. Delirium in older persons. *N Engl J Med.* 2006; 354:1157–1165. [PubMed: 16540616]
 92. Ponikowski P, Chua TP, Piepoli M, Ondusova D, Webb-Peploe K, Harrington D, Anker SD, Volterrani M, Colombo R, Mazzuero G, Giordano A, Coats AJ. Augmented peripheral chemosensitivity as a potential input to barore-flex impairment and autonomic imbalance in chronic heart failure. *Circulation.* 1997; 96:2586–2594. [PubMed: 9355898]
 93. Rydlewska A, Jankowska EA, Ponikowska B, Borodulin-Nadzieja L, Banasiak W, Ponikowski P. Changes in autonomic balance in patients with decompensated chronic heart failure. *Clin Auton Res.* 2011; 21:47–54. [PubMed: 21080025]
 94. Mebazaa A, Yilmaz MB, Levy P, Ponikowski P, Peacock WF, Laribi S, Ristic AD, Lambrinou E, Masip J, Riley JP, McDonagh T, Mueller C, deFilippi C, Harjola VP, Thiele H, Piepoli MF, Metra M, Maggioni A, McMurray J, Dickstein K, Damman K, Seferovic PM, Ruschitzka F, Leite-Moreira AF, Bellou A, Anker SD, Filippatos G. Recommendations on pre-hospital and early hospital management of acute heart failure: a consensus paper from the Heart Failure Association

of the European Society of Cardiology, the European Society of Emergency Medicine and the Society of Academic Emergency Medicine. *Eur J Heart Fail.* 2015; 17:544–558. [PubMed: 25999021]

95. Masip J, De Mendoza D, Planas K, Paez J, Sanchez B, Cancio B. Peripheral venous blood gases and pulse-oximetry in acute cardiogenic pulmonary oedema. *Eur Heart J Acute Cardiovasc Care.* 2012; 1:275–280. [PubMed: 24062917]
96. Barthel P, Wensel R, Bauer A, Muller A, Wolf P, Ulm K, Huster KM, Francis DP, Malik M, Schmidt G. Respiratory rate predicts outcome after acute myocardial infarction: a prospective cohort study. *Eur Heart J.* 2013; 34:1644–1650. [PubMed: 23242188]
97. Masip J, Gaya M, Paez J, Betbese A, Vecilla F, Manresa R, Ruiz P. Pulse oximetry in the diagnosis of acute heart failure. *Rev Esp Cardiol (Engl Ed).* 2012; 65:879–884. [PubMed: 22766468]
98. Park JJ, Choi DJ, Yoon CH, Oh IY, Lee JH, Ahn S, Yoo BS, Kang SM, Kim JJ, Baek SH, Cho MC, Jeon ES, Chae SC, Ryu KH, Oh BH. The prognostic value of arterial blood gas analysis in high-risk acute heart failure patients: an analysis of the Korean Heart Failure (KorHF) registry. *Eur J Heart Fail.* 2015; 17:601–611. [PubMed: 26096207]
99. Contou D, Fragnoli C, Cordoba-Izquierdo A, Boissier F, Brun-Buisson C, Thille AW. Severe but not mild hypercapnia affects the outcome in patients with severe cardiogenic pulmonary edema treated by non-invasive ventilation. *Ann Intensive Care.* 2015; 5:55.
100. Shirakabe A, Hata N, Kobayashi N, Shinada T, Tomita K, Tsurumi M, Matsushita M, Okazaki H, Yamamoto Y, Yokoyama S, Asai K, Mizuno K. Clinical significance of acid–base balance in an emergency setting in patients with acute heart failure. *J Cardiol.* 2012; 60:288–294. [PubMed: 22819039]
101. Figueras J, Baneras J, Pena-Gil C, Masip J, Barrabes JA, Rodriguez PJ, Garcia-Dorado D. Acute arterial hypertension in acute pulmonary edema: mostly a trigger or an associated phenomenon? *Can J Cardiol.* 2016; 32:1214–1220. [PubMed: 26927859]
102. Lainscak M, Anker SD. Heart failure, chronic obstructive pulmonary disease, and asthma: numbers, facts, and challenges. *ESC Heart Fail.* 2015; 2:103–107.
103. Hawkins NM, Virani S, Ceconi C. Heart failure and chronic obstructive pulmonary disease: the challenges facing physicians and health services. *Eur Heart J.* 2013; 34:2795–2803. [PubMed: 23832490]
104. Marcun R, Sustic A, Brguljan PM, Kadivec S, Farkas J, Kosnik M, Coats AJ, Anker SD, Lainscak M. Cardiac biomarkers predict outcome after hospitalisation for an acute exacerbation of chronic obstructive pulmonary disease. *Int J Cardiol.* 2012; 161:156–159. [PubMed: 22668800]
105. Mueller C, Scholer A, Laule-Kilian K, Martina B, Schindler C, Buser P, Pfisterer M, Perruchoud AP. Use of B-type natriuretic peptide in the evaluation and management of acute dyspnea. *N Engl J Med.* 2004; 350:647–654. [PubMed: 14960741]
106. Collins SP, Lindsell CJ, Storrow AB, Abraham WT. Prevalence of negative chest radiography results in the emergency department patient with decompensated heart failure. *Ann Emerg Med.* 2006; 47:13–18. [PubMed: 16387212]
107. Via G, Hussain A, Wells M, Reardon R, ElBarbary M, Noble VE, Tsung JW, Neskovic AN, Price S, Oren-Grinberg A, Liteplo A, Cordioli R, Naqvi N, Rola P, Poelaert J, Gulic TG, Sloth E, Labovitz A, Kimura B, Breitkreutz R, Masani N, Bowra J, Talmor D, Guarracino F, Goudie A, Xiaoting W, Chawla R, Galderisi M, Blaivas M, Petrovic T, Storti E, Neri L, Melniker L. International evidence-based recommendations for focused cardiac ultrasound. *J Am Soc Echocardiogr.* 2014; 27:683. [PubMed: 24951446]
108. National Institute for Health and Care Excellence (NICE). Acute heart failure: diagnosis and management. Feb 3. 2016 <http://www.nice.org.uk/guidance/cg187/resources/acute-heart-failure-diagnosis-and-management-35109817738693>
109. Papadimitriou L, Georgiopoulou VV, Kort S, Butler J, Kalogeropoulos AP. Echocardiography in acute heart failure: current perspectives. *J Card Fail.* 2016; 22:82–94. [PubMed: 26277267]
110. Kajimoto K, Madeen K, Nakayama T, Tsudo H, Kuroda T, Abe T. Rapid evaluation by lung–cardiac–inferior vena cava (LCI) integrated ultrasound for differentiating heart failure from pulmonary disease as the cause of acute dyspnea in the emergency setting. *Cardiovasc Ultrasound.* 2012; 10:49. [PubMed: 23210515]

111. Platz E, Jhund PS, Campbell RT, McMurray JJ. Assessment and prevalence of pulmonary oedema in contemporary acute heart failure trials: a systematic review. *Eur J Heart Fail.* 2015; 17:906–916. [PubMed: 26230356]
112. Volpicelli G, ElBarbary M, Blaivas M, Lichtenstein DA, Mathis G, Kirkpatrick AW, Melniker L, Gargani L, Noble VE, Via G, Dean A, Tsung JW, Soldati G, Copetti R, Bouhemad B, Reissig A, Agricola E, Rouby JJ, Arbelot C, Liteplo A, Sargsyan A, Silva F, Hoppmann R, Breikreutz R, Seibel A, Neri L, Storti E, Petrovic T. International evidence-based recommendations for point-of-care lung ultrasound. *Intensive Care Med.* 2012; 38:577–591. [PubMed: 22392031]
113. Al Deeb M, Barbic S, Featherstone R, Dankoff J, Barbic D. Point-of-care ultrasonography for the diagnosis of acute cardiogenic pulmonary edema in patients presenting with acute dyspnea: a systematic review and meta-analysis. *Acad Emerg Med.* 2014; 21:843–852. [PubMed: 25176151]
114. Pivetta E, Goffi A, Lupia E, Tizzani M, Porrino G, Ferreri E, Volpicelli G, Balzaretto P, Banderali A, Iacobucci A, Locatelli S, Casoli G, Stone MB, Maule MM, Baldi I, Merletti F, Cibinel GA. Lung ultrasound-implemented diagnosis of acute decompensated heart failure in the ED: a SIMEU multicenter study. *Chest.* 2015; 148:202–210. [PubMed: 25654562]
115. Wang CS, FitzGerald JM, Schulzer M, Mak E, Ayas NT. Does this dyspneic patient in the emergency department have congestive heart failure? *JAMA.* 2005; 294:1944–1956. [PubMed: 16234501]
116. Martindale JL, Wakai A, Collins SP, Levy PD, Diercks D, Hiestand BC, Fermann GJ, deSouza I, Sinert R. Diagnosing acute heart failure in the emergency department: a systematic review and meta-analysis. *Acad Emerg Med.* 2016; 23:223–242. [PubMed: 26910112]
117. Platz E, Pivetta E, Merz AA, Peck J, Rivero J, Cheng S. Impact of device selection and clip duration on lung ultrasound assessment in patients with heart failure. *Am J Emerg Med.* 2015; 33:1552–1556. [PubMed: 26123928]
118. Chiem AT, Chan CH, Ander DS, Kobylivker AN, Manson WC. Comparison of expert and novice sonographers' performance in focused lung ultrasonography in dyspnea (FLUID) to diagnose patients with acute heart failure syndrome. *Acad Emerg Med.* 2015; 22:564–573. [PubMed: 25903470]
119. Gargani L, Pang PS, Frassi F, Miglioranza MH, Dini FL, Landi P, Picano E. Persistent pulmonary congestion before discharge predicts rehospitalization in heart failure: a lung ultrasound study. *Cardiovasc Ultrasound.* 2015; 13:40. [PubMed: 26337295]
120. Vitturi N, Soattin M, Allemand E, Simoni F, Realdi G. Thoracic ultrasonography: a new method for the work-up of patients with dyspnea. *J Ultrasound.* 2011; 14:147–151. [PubMed: 23396858]
121. Volpicelli G, Caramello V, Cardinale L, Mussa A, Bar F, Frascisco MF. Bedside ultrasound of the lung for the monitoring of acute decompensated heart failure. *Am J Emerg Med.* 2008; 26:585–591. [PubMed: 18534289]
122. Coiro S, Rossignol P, Ambrosio G, Carluccio E, Alunni G, Murrone A, Tritto I, Zannad F, Girerd N. Prognostic value of residual pulmonary congestion at discharge assessed by lung ultrasound imaging in heart failure. *Eur J Heart Fail.* 2015; 17:1172–1181. [PubMed: 26417699]
123. Gustafsson M, Alehagen U, Johansson P. Imaging congestion with a pocket ultrasound device: prognostic implications in patients with chronic heart failure. *J Card Fail.* 2015; 21:548–554. [PubMed: 25725475]
124. Platz E, Lewis EF, Uno H, Peck J, Pivetta E, Merz AA, Hempel D, Wilson C, Frasure SE, Jhund PS, Cheng S, Solomon SD. Detection and prognostic value of pulmonary congestion by lung ultrasound in ambulatory heart failure patients. *Eur Heart J.* 2016; 37:1244–1251. [PubMed: 26819225]
125. Rudiger A, Gasser S, Fischler M, Hornemann T, von Eckardstein A, Maggiorini M. Comparable increase of B-type natriuretic peptide and aminoterminal pro-B-type natriuretic peptide levels in patients with severe sepsis, septic shock, and acute heart failure. *Crit Care Med.* 2006; 34:2140–2144. [PubMed: 16763507]
126. Krauser DG, Lloyd-Jones DM, Chae CU, Cameron R, Anwaruddin S, Baggish AL, Chen A, Tung R, Januzzi JL Jr. Effect of body mass index on natriuretic peptide levels in patients with acute congestive heart failure: a ProBNP Investigation of Dyspnea in the Emergency Department (PRIDE) substudy. *Am Heart J.* 2005; 149:744–750. [PubMed: 15990762]

127. Ponikowski P, Voors AA, Anker SD, Bueno H, Cleland JG, Coats AJ, Falk V, Gonzalez-Juanatey JR, Harjola VP, Jankowska EA, Jessup M, Linde C, Nihoy-annopoulos P, Parissis JT, Pieske B, Riley JP, Rosano GM, Ruilope LM, Ruschitzka F, Rutten FH, van der Meer P. 2016 ESC Guidelines for the diagnosis and treatment of acute and chronic heart failure: the Task Force for the diagnosis and treatment of acute and chronic heart failure of the European Society of Cardiology (ESC). Developed with the special contribution of the Heart Failure Association (HFA) of the ESC. *Eur Heart J*. 2016; 37:2129–2200. [PubMed: 27206819]
128. Maisel A, Neath SX, Landsberg J, Mueller C, Nowak RM, Peacock WF, Ponikowski P, Mockel M, Hogan C, Wu AH, Richards M, Clopton P, Filippatos GS, Di SS, Anand I, Ng LL, Daniels LB, Christenson RH, Potocki M, McCord J, Terracciano G, Hartmann O, Bergmann A, Morgenthaler NG. Use of procalcitonin for the diagnosis of pneumonia in patients presenting with a chief complaint of dyspnoea: results from the BACH (Biomarkers in Acute Heart Failure) trial. *Eur J Heart Fail*. 2012; 14:278–286. [PubMed: 22302662]
129. Yancy CW, Jessup M, Bozkurt B, Butler J, Casey DE Jr, Drazner MH, Fonarow GC, Geraci SA, Horwich T, Januzzi JL, Johnson MR, Kasper EK, Levy WC, Masoudi FA, McBride PE, McMurray JJ, Mitchell JE, Peterson PN, Riegel B, Sam F, Stevenson LW, Tang WH, Tsai EJ, Wilkoff BL. 2013 ACCF/AHA guideline for the management of heart failure: a report of the American College of Cardiology Foundation/American Heart Association Task Force on Practice Guidelines. *J Am Coll Cardiol*. 2013; 62:e147–e239. [PubMed: 23747642]
130. Damman K, van Veldhuisen DJ, Navis G, Vaidya VS, Smilde TD, Westenbrink BD, Bonventre JV, Voors AA, Hillege HL. Tubular damage in chronic systolic heart failure is associated with reduced survival independent of glomerular filtration rate. *Heart*. 2010; 96:1297–1302. [PubMed: 20659949]
131. Damman K, van Veldhuisen DJ, Navis G, Voors AA, Hillege HL. Urinary neutrophil gelatinase associated lipocalin (NGAL), a marker of tubular damage, is increased in patients with chronic heart failure. *Eur J Heart Fail*. 2008; 10:997–1000. [PubMed: 18804416]
132. Dupont M, Shrestha K, Singh D, Awad A, Kovach C, Scarpino M, Maroo AP, Tang WH. Lack of significant renal tubular injury despite acute kidney injury in acute decompensated heart failure. *Eur J Heart Fail*. 2012; 14:597–604. [PubMed: 22505396]
133. Maisel AS, Wettersten N, van Veldhuisen DJ, Mueller C, Filippatos G, Nowak R, Hogan C, Kontos MC, Cannon CM, Muller GA, Birkhahn R, Clopton P, Taub P, Vilke GM, McDonald K, Mahon N, Nunez J, Briguori C, Passino C, Murray PT. Neutrophil gelatinase-associated lipocalin for acute kidney injury during acute heart failure hospitalizations: the AKINESIS Study. *J Am Coll Cardiol*. 2016; 68:1420–1431. [PubMed: 27659464]
134. Drolz A, Jager B, Wewalka M, Saxa R, Horvatits T, Roedl K, Perkmann T, Zauner C, Kramer L, Ferenci P, Fuhrmann V. Clinical impact of arterial ammonia levels in ICU patients with different liver diseases. *Intensive Care Med*. 2013; 39:1227–1237. [PubMed: 23636826]
135. European Association for the Study of the Liver, American Association for the Study of Liver Diseases. Hepatic encephalopathy in chronic liver disease: 2014 practice guideline by the European Association for the Study of the Liver and the American Association for the Study of Liver Diseases. *J Hepatol*. 2014; 61:642–659. [PubMed: 25015420]
136. Maisel A, Mueller C, Nowak R, Peacock WF, Landsberg JW, Ponikowski P, Mockel M, Hogan C, Wu AH, Richards M, Clopton P, Filippatos GS, Di SS, Anand I, Ng L, Daniels LB, Neath SX, Christenson R, Potocki M, McCord J, Terracciano G, Kremastinos D, Hartmann O, von Haehling S, Bergmann A, Morgenthaler NG, Anker SD. Mid-region pro-hormone markers for diagnosis and prognosis in acute dyspnea: results from the BACH (Biomarkers in Acute Heart Failure) trial. *J Am Coll Cardiol*. 2010; 55:2062–2076. [PubMed: 20447528]
137. Perez AL, Grodin JL, Wu Y, Hernandez AF, Butler J, Metra M, Felker GM, Voors AA, McMurray JJ, Armstrong PW, Starling RC, O'Connor CM, Tang WH. Increased mortality with elevated plasma endothelin-1 in acute heart failure: an ASCEND-HF biomarker substudy. *Eur J Heart Fail*. 2016; 18:290–297. [PubMed: 26663359]
138. Gayat E, Caillard A, Laribi S, Mueller C, Sadoune M, Seronde MF, Maisel A, Bartunek J, Vanderheyden M, Desutter J, Dendale P, Thomas G, Tavares M, Cohen-Solal A, Samuel JL, Mebazaa A. Soluble CD146, a new endothelial biomarker of acutely decompensated heart failure. *Int J Cardiol*. 2015; 199:241–247. [PubMed: 26209827]

139. Minana G, Nunez J, Banuls P, Sanchis J, Nunez E, Robles R, Mascarell B, Palau P, Chorro FJ, Llacer A. Prognostic implications of arterial blood gases in acute decompensated heart failure. *Eur J Intern Med.* 2011; 22:489–494. [PubMed: 21925058]
140. Sepehrvand N, Ezekowitz JA. Oxygen therapy in patients with acute heart failure: friend or foe? *JACC Heart Fail.* 2016; 4:783–790. [PubMed: 27289409]
141. Girardis M, Busani S, Damiani E, Donati A, Rinaldi L, Marudi A, Morelli A, Antonelli M, Singer M. Effect of conservative vs. conventional oxygen therapy on mortality among patients in an intensive care unit: the oxygen-ICU randomized clinical trial. *JAMA.* 2016; 316:1583–1589. [PubMed: 27706466]
142. Masip J, Roque M, Sanchez B, Fernandez R, Subirana M, Exposito JA. Noninvasive ventilation in acute cardiogenic pulmonary edema: systematic review and meta-analysis. *JAMA.* 2005; 294:3124–3130. [PubMed: 16380593]
143. Weng CL, Zhao YT, Liu QH, Fu CJ, Sun F, Ma YL, Chen YW, He QY. Meta-analysis: noninvasive ventilation in acute cardiogenic pulmonary edema. *Ann Intern Med.* 2010; 152:590–600. [PubMed: 20439577]
144. Collins SP, Mielniczuk LM, Whittingham HA, Boseley ME, Schramm DR, Storrow AB. The use of noninvasive ventilation in emergency department patients with acute cardiogenic pulmonary edema: a systematic review. *Ann Emerg Med.* 2006; 48:260–269. [PubMed: 16934647]
145. Gray A, Goodacre S, Newby DE, Masson M, Sampson F, Nicholl J. Non-invasive ventilation in acute cardiogenic pulmonary edema. *N Engl J Med.* 2008; 359:142–151. [PubMed: 18614781]
146. Masip J, Mebazaa A, Filippatos GS. Noninvasive ventilation in acute cardiogenic pulmonary edema. *N Engl J Med.* 2008; 359:2068–2069.
147. Peacock WF, Hollander JE, Diercks DB, Lopatin M, Fonarow G, Emerman CL. Morphine and outcomes in acute decompensated heart failure: an ADHERE analysis. *Emerg Med J.* 2008; 25:205–209. [PubMed: 18356349]
148. Collins SP, Levy PD, Martindale JL, Dunlap ME, Storrow AB, Pang PS, Albert NM, Felker GM, Fermann GJ, Fonarow GC, Givertz MM, Hollander JE, Lanfear DE, Lenihan DJ, Lindenfeld JM, Peacock WF, Sawyer DB, Teerlink JR, Butler J. Clinical and research considerations for patients with hypertensive acute heart failure: a consensus statement from the Society for Academic Emergency Medicine and the Heart Failure Society of America Acute Heart Failure Working Group. *Acad Emerg Med.* 2016; 23:922–931. [PubMed: 27286136]
149. Verbrugge FH, Grieten L, Mullens W. New insights into combinational drug therapy to manage congestion in heart failure. *Curr Heart Fail Rep.* 2014; 11:1–9. [PubMed: 24218088]
150. Collins SP, Pang PS, Lindsell CJ, Kyriacou DN, Storrow AB, Hollander JE, Kirk JD, Miller CD, Nowak R, Peacock WF, Tavares M, Mebazaa A, Gheorghiu M. International variations in the clinical, diagnostic, and treatment characteristics of emergency department patients with acute heart failure syndromes. *Eur J Heart Fail.* 2010; 12:1253–1260. [PubMed: 20797987]
151. Felker GM, Lee KL, Bull DA, Redfield MM, Stevenson LW, Goldsmith SR, LeWinter MM, Deswal A, Rouleau JL, Ofili EO, Anstrom KJ, Hernandez AF, McNulty SE, Velazquez EJ, Kfoury AG, Chen HH, Givertz MM, Semigran MJ, Bart BA, Mascette AM, Braunwald E, O'Connor CM. Diuretic strategies in patients with acute decompensated heart failure. *N Engl J Med.* 2011; 364:797–805. [PubMed: 21366472]
152. Ng TM, Konopka E, Hyderi AF, Hshieh S, Tsuji Y, Kim BJ, Han SY, Phan DH, Jeng AI, Lou M, Elkayam U. Comparison of bumetanide- and metolazone-based diuretic regimens to furosemide in acute heart failure. *J Cardiovasc Pharmacol Ther.* 2013; 18:345–353. [PubMed: 23538300]
153. ter Maaten JM, Valente MA, Damman K, Hillege HL, Navis G, Voors AA. Diuretic response in acute heart failure – pathophysiology, evaluation, and therapy. *Nat Rev Cardiol.* 2015; 12:184–192. [PubMed: 25560378]
154. Felker GM, O'Connor CM, Braunwald E. Loop diuretics in acute decompensated heart failure: necessary? Evil? A necessary evil? *Circ Heart Fail.* 2009; 2:56–62. [PubMed: 19750134]
155. Gottlieb SS, Brater DC, Thomas I, Havranek E, Bourge R, Goldman S, Dyer F, Gomez M, Bennett D, Ticho B, Beckman E, Abraham WT. BG9719 (CVT-124), an A1 adenosine receptor antagonist, protects against the decline in renal function observed with diuretic therapy. *Circulation.* 2002; 105:1348–1353. [PubMed: 11901047]

156. Francis GS, Siegel RM, Goldsmith SR, Olivari MT, Levine TB, Cohn JN. Acute vasoconstrictor response to intravenous furosemide in patients with chronic congestive heart failure. Activation of the neurohumoral axis. *Ann Intern Med.* 1985; 103:1–6. [PubMed: 2860833]
157. Mentz RJ, Stevens SR, DeVore AD, Lala A, Vader JM, AbouEzzeddine OF, Khazanie P, Redfield MM, Stevenson LW, O'Connor CM, Goldsmith SR, Bart BA, Anstrom KJ, Hernandez AF, Braunwald E, Felker GM. Decongestion strategies and renin–angiotensin–aldosterone system activation in acute heart failure. *JACC Heart Fail.* 2015; 3:97–107. [PubMed: 25543972]
158. Krum H, Iyngkaran P, Lekawanvijit S. Pharmacologic management of the cardiorenal syndrome in heart failure. *Curr Heart Fail Rep.* 2009; 6:105–111. [PubMed: 19486594]
159. Anders HJ, Davis JM, Thurau K. Nephron protection in diabetic kidney disease. *N Engl J Med.* 2016; 375:2096–2098. [PubMed: 27959742]
160. Carlstrom M, Wilcox CS, Arendshorst WJ. Renal autoregulation in health and disease. *Physiol Rev.* 2015; 95:405–511. [PubMed: 25834230]
161. Elkayam U, Tasissa G, Binanay C, Stevenson LW, Gheorghiu M, Warnica JW, Young JB, Rayburn BK, Rogers JG, DeMarco T, Leier CV. Use and impact of inotropes and vasodilator therapy in hospitalized patients with severe heart failure. *Am Heart J.* 2007; 153:98–104. [PubMed: 17174645]
162. Teerlink JR, Cotter G, Davison BA, Felker GM, Filippatos G, Greenberg BH, Ponikowski P, Unemori E, Voors AA, Adams KF Jr, Dorobantu MI, Grinfeld LR, Jondeau G, Marmor A, Masip J, Pang PS, Werdan K, Teichman SL, Trapani A, Bush CA, Saini R, Schumacher C, Severin TM, Metra M. Serelaxin, recombinant human relaxin-2, for treatment of acute heart failure (RELAX-AHF): a randomised, placebo-controlled trial. *Lancet.* 2013; 381:29–39. [PubMed: 23141816]
163. Packer M, O'Connor CM, McMurray JJV, Wittes J, Abraham WT, Anker S, Dickstein K, Filippatos G, Holcomb R, Krum H, Maggioni A, Mebazaa A, Peacock F, Petrie MC, Ponikowski P, Ruschitzka F, van Veldhuisen D, Kowarski LS, Schactman M, Holzmeister J. Effect of ularitide on cardiovascular mortality in acute heart failure. *N Engl J Med.* 2017; 376:1956–1964. [PubMed: 28402745]
164. De Backer D, Biston P, Devriendt J, Madl C, Chochrad D, Aldecoa C, Brasseur A, Defrance P, Gottignies P, Vincent JL. Comparison of dopamine and norepinephrine in the treatment of shock. *N Engl J Med.* 2010; 362:779–789. [PubMed: 20200382]
165. Tacon CL, McCaffrey J, Delaney A. Dobutamine for patients with severe heart failure: a systematic review and meta-analysis of randomised controlled trials. *Intensive Care Med.* 2012; 38:359–367. [PubMed: 22160239]
166. Mebazaa A, Parissis J, Porcher R, Gayat E, Nikolaou M, Boas FV, Delgado JF, Follath F. Short-term survival by treatment among patients hospitalized with acute heart failure: the global ALARM-HF registry using propensity scoring methods. *Intensive Care Med.* 2011; 37:290–301. [PubMed: 21086112]
167. Tarvasmaki T, Lassus J, Varpula M, Sionis A, Sund R, Kober L, Spinar J, Parissis J, Banaszewski M, Silva CJ, Carubelli V, Di SS, Mebazaa A, Harjola VP. Current real-life use of vasopressors and inotropes in cardiogenic shock – adrenaline use is associated with excess organ injury and mortality. *Crit Care.* 2016; 20:208. [PubMed: 27374027]
168. Costanzo MR, Guglin ME, Saltzberg MT, Jessup ML, Bart BA, Teerlink JR, Jaski BE, Fang JC, Feller ED, Haas GJ, Anderson AS, Schollmeyer MP, Sobotka PA. Ultrafiltration versus intravenous diuretics for patients hospitalized for acute decompensated heart failure. *J Am Coll Cardiol.* 2007; 49:675–683. [PubMed: 17291932]
169. Costanzo MR, Saltzberg MT, Jessup M, Teerlink JR, Sobotka PA. Ultrafiltration is associated with fewer rehospitalizations than continuous diuretic infusion in patients with decompensated heart failure: results from UNLOAD. *J Card Fail.* 2010; 16:277–284. [PubMed: 20350693]
170. Costanzo MR, Negoianu D, Jaski BE, Bart BA, Heywood JT, Anand IS, Smelser JM, Kaneshige AM, Chomsky DB, Adler ED, Haas GJ, Watts JA, Nabut JL, Schollmeyer MP, Fonarow GC. Aquapheresis versus intravenous diuretics and hospitalizations for heart failure. *JACC Heart Fail.* 2016; 4:95–105. [PubMed: 26519995]
171. Craig DG, Lee A, Hayes PC, Simpson KJ. Review article: the current management of acute liver failure. *Aliment Pharmacol Ther.* 2010; 31:345–358. [PubMed: 19845566]

172. Stravitz RT, Kramer AH, Davern T, Shaikh AO, Caldwell SH, Mehta RL, Blei AT, Fontana RJ, McGuire BM, Rossaro L, Smith AD, Lee WM. Intensive care of patients with acute liver failure: recommendations of the US Acute Liver Failure Study Group. *Crit Care Med.* 2007; 35:2498–2508. [PubMed: 17901832]
173. Bonilla-Palomas JL, Gamez-Lopez AL, Moreno-Conde M, Lopez-Ibanez MC, Anguita-Sanchez M, Gallego de la Sacristana A, Garcia-Catalan F, Villar-Raez A. Hypoalbuminemia in acute heart failure patients: causes and its impact on hospital and long-term mortality. *J Card Fail.* 2014; 20:350–358. [PubMed: 24486927]
174. Grodin JL, Lala A, Stevens SR, DeVore AD, Cooper LB, AbouEzzeddine OF, Mentz RJ, Groarke JD, Joyce E, Rosenthal JL, Vader JM, Tang WH. Clinical implications of serum albumin levels in acute heart failure: insights from DOSE-AHF and ROSE-AHF. *J Card Fail.* 2016; 22:884–890. [PubMed: 26844764]
175. Fuhrmann V, Madl C, Mueller C, Holzinger U, Kitzberger R, Funk GC, Schenk P. Hepatopulmonary syndrome in patients with hypoxic hepatitis. *Gastroenterology.* 2006; 131:69–75. [PubMed: 16831591]
176. Krowka MJ, Fallon MB, Kawut SM, Fuhrmann V, Heimbach JK, Ramsay MA, Sitbon O, Sokol RJ. International Liver Transplant Society practice guidelines: diagnosis and management of hepatopulmonary syndrome and portopulmonary hypertension. *Transplantation.* 2016; 100:1440–1452. [PubMed: 27326810]
177. Courivaud C, Kazory A. Can we treat fluid overload with fluid? Role of peritoneal dialysis in management of heart failure. *Eur J Heart Fail.* 2012; 14:461–463. [PubMed: 22510421]
178. Koch M, Haastert B, Kohnle M, Rump LC, Kelm M, Trapp R, Aker S. Peritoneal dialysis relieves clinical symptoms and is well tolerated in patients with refractory heart failure and chronic kidney disease. *Eur J Heart Fail.* 2012; 14:530–539. [PubMed: 22447950]
179. Nunez J, Gonzalez M, Minana G, Garcia-Ramon R, Sanchis J, Bodi V, Nunez E, Puchades MJ, Palau P, Merlos P, Llacer A, Miguel A. Continuous ambulatory peritoneal dialysis as a therapeutic alternative in patients with advanced congestive heart failure. *Eur J Heart Fail.* 2012; 14:540–548. [PubMed: 22327061]
180. Metra M, Davison B, Bettari L, Sun H, Edwards C, Lazzarini V, Piovanelli B, Carubelli V, Bugatti S, Lombardi C, Cotter G, Dei CL. Is worsening renal function an ominous prognostic sign in patients with acute heart failure? The role of congestion and its interaction with renal function. *Circ Heart Fail.* 2012; 5:54–62. [PubMed: 22167320]
181. Filippatos G, Teerlink JR, Farmakis D, Cotter G, Davison BA, Felker GM, Greenberg BH, Hua T, Ponikowski P, Severin T, Unemori E, Voors AA, Metra M. Serelaxin in acute heart failure patients with preserved left ventricular ejection fraction: results from the RELAX-AHF trial. *Eur Heart J.* 2014; 35:1041–1050. [PubMed: 24316514]
182. Brunner-La Rocca HP, Sandersvan WS, Knackstedt C. Biomarkers in patients with acute dyspnoea: what for? *Eur Heart J.* 2012; 33:2124–2126. [PubMed: 22807467]
183. Chioncel O, Collins SP, Ambrosy AP, Gheorghide M, Filippatos G. Pulmonary oedema – therapeutic targets. *Card Fail Rev.* 2015; 1:38–45. [PubMed: 28785430]
184. Milzman D, Napoli A, Hogan C, Zlidenny A, Janchar T. Thoracic impedance vs. chest radiograph to diagnose acute pulmonary edema in the ED. *Am J Emerg Med.* 2009; 27:770–775. [PubMed: 19683102]
185. Plaschke K, von Haken R, Scholz M, Engelhardt R, Brobeil A, Martin E, Weigand MA. Comparison of the confusion assessment method for the intensive care unit (CAM-ICU) with the Intensive Care Delirium Screening Checklist (ICDSC) for delirium in critical care patients gives high agreement rate(s). *Intensive Care Med.* 2008; 34:431–436. [PubMed: 17994221]

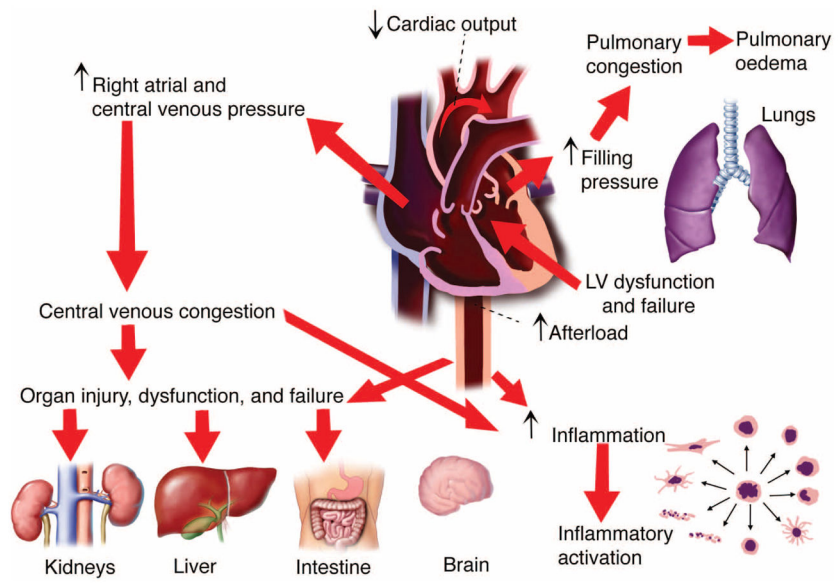


Figure 1. Relationships between congestion and end-organs. LV, left ventricle.

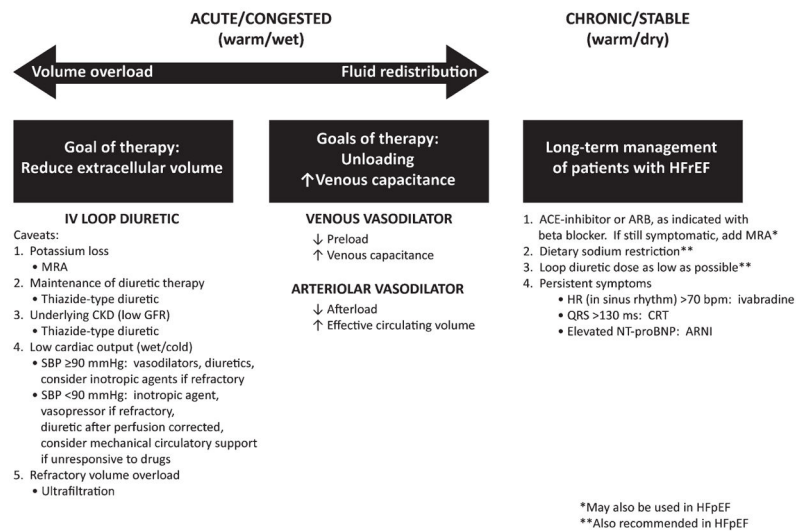


Figure 2.

The pharmacological management of congestion in heart failure. Patients without congestion (i.e. normal filling pressures and no volume overload) should be managed with neurohumoral blockers, the lowest possible dose of loop diuretics, and selected therapies in cases of persistent symptoms. In congestion, it is pivotal to distinguish between the phenotype of volume overload: cardiac-type fluid accumulation (i.e. oedema, ascites, pleural effusion) or vascular-type fluid redistribution. In volume overload, the goal is to remove extracellular fluid through the use of loop diuretic therapy, which should be adequately dosed and administered i.v. Loop diuretics should often be used in combination with diuretic agents acting in other segments of the nephron. Vasodilators may be added cautiously in low cardiac output and systolic blood pressure of >90 mmHg, while avoiding a decrease in mean arterial blood pressure to <65 mmHg. Inotropes are to be used only in severe hypoperfusion. The use of ultrafiltration is limited to selected cases of refractory volume overload. In contrast, vasodilating agents (with a considerably lower dose of diuretics) are the preferred pharmacological option in vascular fluid redistribution. ACE, angiotensin-converting enzyme; ARB, angiotensin receptor blocker; ARNI, angiotensin receptor neprilysin inhibitor; CKD, chronic kidney disease; CRT, cardiac resynchronization therapy; GFR, glomerular filtration rate; HFpEF, heart failure with preserved ejection fraction; HF_rEF, heart failure with reduced ejection fraction; HR, heart rate; MRA, mineralocorticoid receptor antagonist; NT-proBNP, N-terminal pro-B-type natriuretic peptide; SBP, systolic blood pressure.

Table 1

Assessment of organ injury in acute heart failure

Organ	Clinical signs and symptoms	Biochemical	Imaging	Other monitoring
Heart (congestion)	Third heart sound, elevated jugular venous pressure, hepatojugular reflux, ascites, pleural effusion, swollen legs	Natriuretic peptides (myocardial stretch), cardiac troponin	Echocardiography, ECG, ultrasound of IVC	Heart rate and blood pressure monitoring, central venous catheter, PiCCO catheter (EVLWI)
Heart (cardiogenic shock)	Cold extremities, pallor, mottling, tachycardia, hypotension, oliguria, mental disturbance, confusion	Lactate; central venous oxygen saturation (SvO ₂ or ScvO ₂); metabolic acidosis	Echocardiography, ECG	As above, plus arterial line, cardiac output monitoring; ^{2,5} (PAC, PiCCO catheter)
Kidney	Oliguria	Serum creatinine, eGFR, cystatin C, sodium, potassium, biochemical urinalysis	Ultrasound	Urinary output
Lung	Dyspnoea, orthopnoea, increased work of breathing, tachypnoea, rales	Peripheral arterial oxygen saturation, arterial and venous blood gases	Chest X-ray, lung ultrasound, computed tomography	PAC, PiCCO catheter, impedance
Liver	Hepatomegaly	Transaminases, alkaline phosphatase, bilirubin, albumin	Ultrasound	Intra-abdominal pressure measured by Foley catheter
Abdomen	Ascites	N/A	Ultrasound	
Gut	Appetite loss, abdominal swelling	N/A	N/A	
Vasculature, endothelium	Jugular vein distension, ^a mottling, ^b delayed capillary refill, ^b peripheral oedema, ^a cold periphery ^b	N/A	Ultrasound of IVC	
Brain	Mental disturbance, confusion	N/A		GCS, CAM-ICU, ICDSC ¹⁸⁵

CAM-ICU, confusion assessment method for the intensive care unit; ECG, electrocardiography; eGFR, estimated glomerular filtration rate; EVLWI, extravascular lung water index; GCS, Glasgow Coma Scale; ICDSC, Intensive Care

Delirium Screening Checklist; IVC, inferior vena cava; N/A, not applicable; PAC, pulmonary artery catheter; PiCCO, transpulmonary thermodilution [Pulse Contour Cardiac Output]; ScvO₂, central venous oxygen saturation; SvO₂, venous oxygen saturation.

^a Signs of congestion.

^b Signs of hypoperfusion.