



RESEARCH ARTICLE

REVISED **Hospital performance and payment: impact of integrating pay-for-performance on healthcare effectiveness in Lebanon [version 2; peer review: 2 approved]**

Jade Khalife ^{1,2}, Walid Ammar^{2,3}, Maria Emmelin¹, Fadi El-Jardali ³, Bjorn Ekman ¹

¹Faculty of Medicine at Lund University, Lund, Sweden

²Ministry of Public Health, Beirut, Lebanon

³Faculty of Health Sciences, American University of Beirut, Beirut, Lebanon

v2 **First published:** 14 May 2020, 5:95
<https://doi.org/10.12688/wellcomeopenres.15810.1>
Latest published: 10 Dec 2020, 5:95
<https://doi.org/10.12688/wellcomeopenres.15810.2>

Abstract

Background: In 2014 the Lebanese Ministry of Public Health integrated pay-for-performance into setting hospital reimbursement tiers, to provide hospitalization service coverage for the majority of the Lebanese population. This policy was intended to improve effectiveness by decreasing unnecessary hospitalizations, and improve fairness by including risk-adjustment in setting hospital performance scores.

Methods: We applied a systematic approach to assess the impact of the new policy on hospital performance. The main impact measure was a national casemix index, calculated across 2011-2016 using medical discharge and surgical procedure codes. A single-group interrupted time series analysis model with Newey ordinary least squares regression was estimated, including adjustment for seasonality, and stratified by case type. Code-level analysis was used to attribute and explain changes in casemix index due to specific diagnoses and procedures.

Results: Our final model included 1,353,025 cases across 146 hospitals with a post-intervention lag-time of two months and seasonality adjustment. Among medical cases the intervention resulted in a positive casemix index trend of 0.11% per month (coefficient 0.002, CI 0.001-0.003), and a level increase of 2.25% (coefficient 0.022, CI 0.005-0.039). Trend changes were attributed to decreased cases of diarrhea and gastroenteritis, abdominal and pelvic pain, essential hypertension and fever of unknown origin. A shift from medium to short-stay cases for specific diagnoses was also detected. Level changes were attributed to improved coding practices, particularly for breast cancer, leukemia and chemotherapy. No impact on surgical casemix index was found.

Conclusions: The 2014 policy resulted in increased healthcare

Open Peer Review

Approval Status

	1	2
version 2 (revision) 10 Dec 2020		 view
version 1 14 May 2020	 view	 view

1. **Kristiina Kahur** , Nordic Casemix Centre, Helsinki, Finland
2. **Linghan Shan**, Harbin Medical University, Harbin, China

Any reports and responses or comments on the article can be found at the end of the article.

effectiveness, by increasing the casemix index of hospitals contracted by the Ministry. This increase was mainly attributed to decreased unnecessary hospitalizations and was accompanied by improved medical discharge coding practices. Integration of pay-for-performance within a healthcare system may contribute to improving effectiveness. Effective hospital regulation can be achieved through systematic collection and analysis of routine data.

Keywords

performance, health systems, reform, casemix index, low and middle income countries, interrupted time series analysis, unnecessary hospitalization, coding

Corresponding author: Jade Khalife (jade.khalife@med.lu.se)

Author roles: **Khalife J:** Conceptualization, Data Curation, Formal Analysis, Funding Acquisition, Investigation, Methodology, Project Administration, Resources, Software, Visualization, Writing – Original Draft Preparation; **Ammar W:** Conceptualization, Funding Acquisition, Resources, Writing – Review & Editing; **Emmelin M:** Funding Acquisition, Supervision, Writing – Review & Editing; **El-Jardali F:** Funding Acquisition, Project Administration, Writing – Review & Editing; **Ekman B:** Conceptualization, Funding Acquisition, Project Administration, Supervision, Writing – Review & Editing

Competing interests: No competing interests were disclosed.

Grant information: This work was supported by the Wellcome Trust [204020] and a project grant [MR/N015916/1] from the Joint Health Systems Research Initiative (DFID/MRC/Wellcome Trust/ESRC).

The funders had no role in study design, data collection and analysis, decision to publish, or preparation of the manuscript.

Copyright: © 2020 Khalife J *et al.* This is an open access article distributed under the terms of the [Creative Commons Attribution License](https://creativecommons.org/licenses/by/4.0/), which permits unrestricted use, distribution, and reproduction in any medium, provided the original work is properly cited.

How to cite this article: Khalife J, Ammar W, Emmelin M *et al.* **Hospital performance and payment: impact of integrating pay-for-performance on healthcare effectiveness in Lebanon [version 2; peer review: 2 approved]** Wellcome Open Research 2020, 5:95 <https://doi.org/10.12688/wellcomeopenres.15810.2>

First published: 14 May 2020, 5:95 <https://doi.org/10.12688/wellcomeopenres.15810.1>

REVISED Amendments from Version 1

Based on the feedback received from the two reviewers, we have updated the manuscript with some additional information. We have clarified that the policy intervention was directed at the categorization of hospitals into the three reimbursement tiers, but not the reimbursement structure itself. We have clarified the weight-setting process for diagnosis and procedure codes. We have defined the systematic approach used in this investigation. We have acknowledged that inclusion of age and comorbidity variables would allow more accurate calculation of hospitalization complexity.

Any further responses from the reviewers can be found at the end of the article

Introduction

The linkage of performance and payment has been increasingly used in healthcare during the past two decades. In recent years this has extended towards hospital performance designs, despite mixed evidence regarding its effects.

In 2014 the Lebanese Ministry of Public Health (MoPH) changed the basis by which it determined the payment reimbursement tiers of about 140 public and private hospitals, which it contracts for providing hospitalization service coverage for the majority of the Lebanese population. A pay-for-performance (P4P) framework was integrated within this system, the most prominent component of which was the hospital casemix index (CMI), which reflects the average risk or illness severity of all patients within a hospital (Khalife *et al.*, 2017). This intervention was aimed at improving effectiveness by incentivizing hospitals to decrease unnecessary hospitalizations, as well as to improve fairness in determining hospital reimbursement (by including risk-adjustment), within an integrated evaluation framework.

Hospitalizations that are not compliant with any medical or social criteria may be considered as unnecessary hospitalizations. These arguably differ from potentially preventable hospitalizations; in that the latter may have an indication for admission but would have otherwise been avoided with appropriate outpatient or primary care. Unnecessary hospitalizations are common in various countries and challenge the functioning of healthcare systems (Caminiti *et al.*, 2013; Macinko *et al.*, 2010; Stranges & Friedman, 2006; To *et al.*, 1996). Such cases may be primarily regarded as a question of appropriateness of care. Using the Kruk and Freedman performance framework, unnecessary hospitalizations may be categorized as a quality of care output measure, under the effectiveness dimension (Kruk & Freedman, 2008). Downstream association with outcomes on patient health status (effectiveness) and on maximizing value of resources (efficiency) would also be expected.

The current evidence on the impact of P4P in healthcare is weak, particularly in low- and middle-income countries (LMICs) (Witter *et al.*, 2012). In this study we assess the impact

of the integration of the P4P policy by the MoPH, and contribute to the evidence base on P4P effectiveness, using routine data and a specially developed CMI.

Pay for performance

A health reform that links measures to payment creates a financial incentive for service providers to improve their performance vis-à-vis these measures. Seen through the lens of principal-agent theory, such P4P seeks to address the recognized information problems within healthcare, particularly information asymmetry (Smith & Hanson, 2012). This alignment of interests provides the principal (i.e. the payer) a tool to incentivize the provider to improve healthcare outputs and outcomes (Grace *et al.*, 2015). Such tools may function at a system level within a complex environment and should be adjustable by the principal (Roberts *et al.*, 2004). Aspects of a P4P intervention that have a large role in determining impact include the actual measures used, context and incentive size.

Most performance frameworks have either been developed for use in high-income countries (HICs) or are heavily influenced by such contexts, and likely require adjustment for use in LMICs (Tashobya *et al.*, 2014). Based on a review of commonly used performance indicators, Kruk and Freedman provide a framework for LMICs (Kruk & Freedman, 2008). Adapting Donabedian's system evaluation of structure, process and outcome measures, this framework categorized indicators as outputs/processes and outcomes/impact along with the dimensions of effectiveness, equity and efficiency (Donabedian, 1966; Donabedian, 1988).

In LMICs, healthcare P4P initiatives commonly include structural measures of quality. More widely, however, a transition is ongoing towards outcome measures, which are the ultimate target for performance improvement (Chee *et al.*, 2016; Gergen *et al.*, 2017). Establishing broad outcome measurements may enhance P4P impact and integration into routine systems may make such initiatives more cost-effective (Borghi *et al.*, 2015; Chee *et al.*, 2016).

The effects of healthcare P4P in HIC contexts have been mixed, largely confirming the scarcity of the evidence base (Eijkenaar *et al.*, 2013; Emmert *et al.*, 2012; Gillam *et al.*, 2012; Van Herck *et al.*, 2010). A recent review on P4P schemes in the United Kingdom found some positive findings, but cautioned that overall effects on care quality were unclear, underscoring the need for long-term monitoring and evaluation (Mandavia *et al.*, 2017).

The potential for P4P impact may be larger in LMICs, considering the relatively lower resources of providers and more dynamic health reform context (Witter *et al.*, 2012). However, the scarcity of the evidence from LMICs is particularly pronounced; the evidence base is too weak to make general conclusions (Witter *et al.*, 2012). A recent review of P4P in maternal and child care in LMICs found positive impact on process quality, but weak evidence on health outcomes and out-of-pocket expenses (Das *et al.*, 2016).

Hospital-based P4P initiatives in England and the United States targeting 30-day readmissions and mortality resulted in improved short-term performance that was not sustained in the long-term, further highlighting challenges due to contextual changes, spill-over, measurement limitations and overall design (Jha *et al.*, 2012; Kristensen *et al.*, 2014; Lindenaue *et al.*, 2007; Sutton *et al.*, 2012; Werner *et al.*, 2011). Long-term investigations of previously favorable initiatives have found improvement in readmissions, but no improvement or worsening of mortality, as well as undesirable practices having misled some earlier findings (Gupta & Fonarow, 2018; Wadhera *et al.*, 2018; Wasfy *et al.*, 2017). Anticipatory or short-term behaviors in response to P4P scheme engagement and implementation may differ from long-term behavior, likely contributing to the findings of short but not long-term effectiveness of P4P (Ryan *et al.*, 2015).

It has been proposed that the debate on P4P should move from distinct projects towards integration within the health system, with broad system objectives (Soucat *et al.*, 2017). Such integration may be seen as an extension of strategic purchasing of health services, working towards achieving universal health coverage. An approach that considers the overall health system rather than more narrow objectives would avoid 'not seeing the forest for the trees' (Soucat *et al.*, 2017).

Aim and objectives

We apply a systematic approach to assess whether the new pay-for-performance policy had an impact on the healthcare system's effectiveness. We analyze whether this policy affected the complexity of the average hospitalization case (i.e. CMI), stratifying by hospitalization case types, length of stay, and hospital ownership. We further quantify any changes, with plausible explanations, at the level of diagnoses and procedures.

The specific objectives are:

1. To determine the impact on CMI level and trend, across public and private hospitals
 - a. by case types: medical, surgical and mixed
 - b. by length of stay: medical short, medium and long-stays
2. To detect any changes in diagnoses and procedures
 - a. by contribution to CMI changes
 - b. by hospitalized cases

The Lebanese health care context and reforms

Lebanon is a small Mediterranean country of 4.5 million citizens and 2 million refugees (primarily Syrian) (United Nations, 2017). The diversified healthcare system is dominated by public payers and private providers (Ammar, 2003). The MoPH is the largest public payer, covering hospitalization for about 52% of Lebanese, who otherwise lack any insurance coverage for hospitalization (Ammar, 2009). This role is a legacy of the 1975–1990 war that disrupted developmental reforms at various stages.

The MoPH has engaged in different healthcare supply-side reforms. Contracting private hospitals to provide hospitalization services took place in the 1960s due to public coverage limitations and political reasons, preceding neoliberal influences that supported New Public Management agendas in other systems (Smith & Hanson, 2012). In the late 1990s public hospitals were granted semi-autonomous status, similar to contemporary experiences of public hospitals in HICs and LMICs.

Hospital accreditation was linked to payment in 2001 and incentivized hospitals towards quality improvement, with accreditation results used to categorize hospitals across three reimbursement tiers (Ammar *et al.*, 2007). Hospital budgets set on an annual basis were not targeted by this change, as they continued to be historically and politically determined. Therefore, a moral hazard existed for hospitals interested in admitting more predictable low-risk patients to efficiently reach their pre-allocated budgets. Unnecessary hospitalizations became increasingly recognized as a major problem, particularly for medical (non-surgical) cases where lower barriers to treatment existed (Kronfol *et al.*, 2014). These were often one or two-day stays with variable costs but generally less complex diagnoses or symptoms, such as nausea, vomiting, diarrhea and gastroenteritis (Kronfol *et al.*, 2014).

Policy reform

To address unnecessary hospitalizations and increase fairness in hospital performance assessment, the MoPH created a new policy intervention in late 2014, linking reimbursement tier to a composite hospital total performance score (TPS) (Ammar *et al.*, 2013). The first public announcement of the intervention was through an engagement event held in August 2014 for hospital executives and managers. The event highlighted the new model and its components, as well as the importance of accurate coding for appropriate casemix assessment. The TPS included components on CMI, patient satisfaction and other minor policy indicators, as well as accreditation (Khalife *et al.*, 2017). Specifically, this policy had a regulatory aspect in the form of accreditation, and more distinct payment aspect for other components. The CMI reflects the average risk or illness severity of all patients within a hospital, and was effectively the greatest determinant of a hospital's TPS (Hornbrook, 1982). Therefore, a decrease in unnecessary hospitalizations would be expected to increase a hospital's CMI and consequently its TPS. Additional information regarding this process has been described elsewhere (Khalife *et al.*, 2017).

The incentive size for tier classification remained unchanged from pre- to post-intervention periods. Broadly, the difference in reimbursement tier is 10% additional change per tier among surgical procedures, and about 15% per tier among medical cases; e.g. a bottom-tier 'T3' hospital charges 1,000,000 LBP (USD 670) for a surgical procedure, while a top-tier 'T1' hospital charges 1,200,000 (USD 800) for the same procedure.

Consequently, the policy intervention was directed at the mechanism whereby hospitals were categorized into the different

reimbursement tiers. However, the intervention did not change the reimbursement structure of hospitalization cases. Reimbursement of medical cases remained fee-for-service, while surgical cases used a pre-defined flat-fee.

Methods

Ethical statement

Research protocol approval was granted by the Institutional Review Board (IRB) at the American University of Beirut (ID: FHS.FE.21). The requirement for patient consent was waived by the IRB.

Data sources

Hospitalization data including all cases under MoPH coverage from January 2011 to December 2016 was extracted by the MoPH Information Technologies Department and shared with the research team in a format with patient identifiers anonymized. The fields included record number (unique per admission), case identifier, hospital code, admission date, discharge date, length of stay, total charge, medical code on each admission and discharge, and surgical procedure code. STATA software package version 11 was used for all calculations and analyses.

CMI calculation

The MoPH overcame limitations in developing a hospital CMI for its contracted 146 public and private hospitals, due to the lack of local Diagnosis Related Groups (DRGs) on which most casemix systems rely on. The MoPH CMI calculation approach used average costs for weight-setting among medical cases based on International Classification of Diseases, 10th Revision (ICD-10) discharge code, and Common Procedural Terminology (CPT) procedure code among surgical cases (Ammar *et al.*, 2013; World Health Organization, 2006; Yang & Reinke, 2006). Among medical cases the weight-setting process was separated across short-stay (<2 days), medium-stay (2–15 days) and long-stay cases (>15 days). This approach has been detailed elsewhere (Ammar *et al.*, 2013; Khalife *et al.*, 2017).

For greater comparability across case types, we standardized the weight-setting previously used by the MoPH; we used five-year cost averages rather than the MoPH two-year averages; and assigned the average weight among medical cases for low-volume medical conditions (less than 20 cases). Surgical CMI did not require average cost figures as surgical services have fixed flat-rate charges. However, 11 procedures with weights ten times above the standard reference (1 million LBP) were capped at a weight of 10.00 to limit excessive impact of outliers.

The weight for each ICD and procedure code was the same throughout the period investigated. We note that the MoPH updated procedure costs in March 2013, which remained in use until the 2018 update. This increased the base-rate of all procedures, to account for inflation. We used weights based on the March 2013 update, also retrospectively up to 2011. The MoPH undertook a hospital-bed update (base-rate), which is only one component of the bill charged by hospitals to the MoPH, but nevertheless represents an internal inflation adjustment.

For medical cases, we used the five-year code average without further adjustment.

We developed algorithms to calculate monthly CMI (rather than yearly) and developed ‘mixed’ cases algorithms (cases concurrently including medical and surgical care). We incorporated secondary procedures into surgical CMI, but this was not done for medical CMI as additional diagnoses or comorbidities are not currently utilized.

CMI was calculated using the formula below, which excludes the denominator correction component used in some versions, as this was calculated at system rather than hospital level (Lichtig, 1986). This is also the standard generic CMI formula used by the US Centers for Medicare and Medicaid Services (Services, 2011).

$$CMI = \frac{\sum [W_g * Ng_n]}{\sum g Ng_n}$$

where W_g is the weight calculated for each ICD or CPT, and N_{gn} is the number of cases within each ICD in the total population.

CMI was calculated for medical, surgical and mixed cases separately, and repeated using cases only at public hospitals and only at private hospitals separately. Among the medical cases, short-stay, medium-stay and long-stay casemix indices were also calculated separately at each stage and combined using a case-weighted approach to also obtain an all-stay medical CMI. Such a combination was not conducted for all cases combined as it would likely conceal meaningful findings.

We excluded all chemotherapy coded cases (ICD Z51.1 and Z51.2). Chemotherapy is generally a low-cost short-stay hospitalization, and the MoPH has since 2014 communicated to hospitals the need for correct coding specifically for cancer patients. As a result, the MoPH has documented a decrease in chemotherapy miscoding under general cancer codes (e.g. C50 code being corrected as Z51.1). Retaining chemotherapy codes would have had the effect of artificially decreasing CMI. Typically, chemotherapy cases form around 7.9% of medical cases or 4.4% of total cases.

CMI algorithms were first run on an annual level for developing descriptive statistics. Similar algorithms were used to develop a monthly CMI with discharge date used to categorize records into calendar months.

Study design and methods

Impact on CMI level and trend, across public and private hospitals (Objective 1). To detect a change in CMI attributable to our intervention, it is necessary to make use of a control, whether outside of the group (using randomization) or within it (using historical control), while accounting for potential confounders. Randomization was not possible in this situation due to legal regulations that necessitate the MoPH to use the

same performance assessment and reimbursement framework for all acute-care hospitals. Considering the availability of multi-year data, we chose to use a single-group interrupted time series (ITS), with Newey ordinary least squares regression. ITS analysis is considered the most appropriate quasi-experimental design, given the research context and aims (Penfold & Zhang, 2013). With such an approach we seek to identify an ‘interruption’ of a continuous sequence of observations in a population (a time series) by a specific intervention. ITS analysis is particularly useful when randomization is not possible, and may have greater external validity than randomized designs when occurring in a real-world setting (Bernal *et al.*, 2016). This approach uses a historical control group, and more broadly the Bradford Hill criteria for causality to offer plausible causal explanations (Habicht *et al.*, 1999; World Health Organization, 2009; World Health Organization, 2012). Such an approach has also been noted as the most suitable for the evaluation of P4P interventions (World Health Organization, 2009).

ITS analysis has been increasingly used in population-level evaluations of health interventions, with advantages including the control for secular trends, ease of population-level analysis and ability to evaluate intended and unintended outcomes (Bernal *et al.*, 2016; Lopez Bernal *et al.*, 2018). It also allows us to evaluate both the short- and long-term impact of an intervention, by analysis of level and trend changes, respectively, and when appropriately used allows us to limit the effects of history bias in what is a complex real-world setting (Naci & Soumerai, 2016).

We applied ITS analysis on a dataset including all cases between January 2011 to December 2016, with the exception of the mixed cases dataset that began January 2012 (see Table 1). Statistical significance was set at $p < 0.05$. It is relevant to note that discharge codes were recorded in the hospitalization database as of January 2011 for most hospitals, with a few hospitals reaching full compliance within five months. Mixed cases data was available as of January 2012.

The intervention was given a two-month lag for expected effect (i.e. as of October 2014), based on the MoPH experience of the hospital response time (personal communication; Dr. Jihad Makouk, MoPH). We adjusted for seasonality using calendar months. Using 72 monthly data points, and CMI as the dependent variable, we ran ITS separately for each of medical all-stay, short-stay, medium-stay and long-stay cases; surgical cases and mixed cases. We subsequently stratified into public and private hospital cases.

As part of the sensitivity analysis we also varied lag period between intervention and impact by zero to four months, with the overall results being unchanged except in magnitude. To ensure the adequacy of our ITS model, we assessed auto-correlation using the Cumby-Huizinga test; in most cases auto-correlation was not present, and where detected was otherwise accounted for by the lag period.

Changes in diagnoses and procedures (Objective 2). We used a before and after approach to quantify the change in individual

diagnoses and procedures in terms of CMI change (contribution to changes detected in Objective 1), and in terms of absolute and relative change to all hospitalizations. We used algorithms on a dataset including all medical and surgical cases, with a pre-intervention period combining 2013 and 2014 cases and a post-intervention period with 2015 and 2016 cases. This objective used annual cut-offs, comparing 2013 and 2014 cases with 2015 and 2016 cases, in contrast to the first objective (monthly). This was to allow for the development of policy-relevant information and allow CMI algorithm looping and comparison across around 10,000 ICD and CPT codes.

For each case type and stay, we selected the top twenty codes with the greatest CMI change from pre- to post-intervention periods, for code-level analysis. We therefore restricted our analysis to examine the codes with the greatest impact on CMI in any direction (i.e. positive or negative).

In our approach, the codes which had the greatest *impact* on overall CMI are identified as a function of code weight in relation to the overall CMI ‘average’, the code weight itself, and frequency. While the codes with the greatest change in terms of their *share* of CMI are identified as a function of code weight and frequency only.

CMI change formulae:

$$WN_0 = (W_g N_{gn})^{2013} + (W_g N_{gn})^{2014}$$

$$WN_1 = (W_g N_{gn})^{2015} + (W_g N_{gn})^{2016}$$

$$\text{Code Count Effect (CCE)} = \left[(WN_1 - WN_0) * (W_g - CMI_{ref}) \right]^2$$

$$\text{Code attributable change} = \left(\frac{CCE_g}{\Sigma CCE} \right) * 100\%$$

Where W_g is the weight calculated for each ICD or CPT, and N_{gn} is the number of cases within each ICD in the total population.

CMI *share* change formula:

$$\text{Code share change} = \frac{(WN_1 - WN_0)}{WN_0}$$

Results

Descriptive statistics

The total study population across 2011–2016 included 1,353,025 inpatient hospitalizations, or about 230,000 per year, which were composed of 55% medical cases, 43% surgical cases and 2% mixed cases (see Table 1). Medium-stay medical cases were about four times more frequent than short-stay cases (43% to 11%), with long-stay cases being a small minority (1%). Among surgical cases the ratio of case to procedure was 1 case to 1.1 procedure, and among mixed cases 1 case to 1.5 procedure.

Table 1. Hospitalization cases under the Ministry of Public Health coverage at public and private hospitals in Lebanon, 2011–2016.

Case type	2011		2012		2013		2014		2015		2016		All years	
	n	%	n	%	n	%	n	%	n	%	n	%	n	%
All hospitals														
Medical	19,574	10.4	26,044	11.5	27,119	11.5	26,720	11.3	24,578	10.4	24,220	10.5	148,310	11.0
Short-stay	79,264	42.3	94,523	41.8	101,132	43.0	101,524	42.9	107,379	45.3	101,772	44.2	585,809	43.3
Medium-stay	2,156	1.1	2,851	1.3	2,793	1.2	2,770	1.2	2,674	1.1	2,494	1.1	15,744	1.2
Long-stay	100,994	53.8	123,418	54.6	131,044	55.8	131,014	55.4	134,631	56.8	128,486	55.7	749,863	55.4
<i>All medical cases</i>	93,516	-	111,355	-	112,523	-	114,021	-	110,168	-	109,083	-	650,666	-
Surgical	83,025	44.3	98,396	43.6	99,767	42.5	100,934	42.7	97,037	40.9	95,602	41.5	574,975	42.5
Procedures	5,247	-	6,358	-	6,164	-	6,668	-	8,241	-	8,932	-	41,610	-
Procedures	3,584	1.9	4,120	1.8	4,114	1.8	4,446	1.9	5,517	2.3	6,396	2.8	28,187	2.1
Total cases	187,603	100	225,934	100	234,925	100	236,394	100	237,185	100	230,484	100	1,353,025	100
Public														
Case type	2011	2012	2013	2014	2015	2016	2016	2016	2016	2016	2016	2016	All years	All years
	n	%	n	%	n	%	n	%	n	%	n	%	n	%
Medical	6,301	12.7	9,263	13.3	9,178	13.0	9,541	12.8	10,051	12.8	10,634	12.4	55,033	12.8
Short-stay	20,968	42.2	29,229	41.8	30,672	43.3	33,680	45.3	37,492	47.8	40,832	47.7	193,094	45.0
Medium-stay	501	1.0	747	1.1	633	0.9	630	0.8	669	0.9	704	0.8	3,889	0.9
Long-stay	27,770	56.0	39,239	56.2	40,483	57.2	43,851	59.0	48,212	61.5	52,170	60.9	252,015	58.7
<i>All medical cases</i>	24,049	-	33,463	-	33,031	-	33,055	-	32,871	-	36,471	-	192,940	-
Surgical	20,906	42.1	29,167	41.8	28,845	40.7	28,896	38.9	28,485	36.3	31,491	36.8	167,990	39.1
Procedures	1,476	-	2,430	-	2,275	-	2,367	-	2,423	-	2,726	-	13,697	-
Procedures	957	1.9	1,453	2.1	1,492	2.1	1,593	2.1	1,678	2.1	1,997	2.3	9,180	2.1
Total cases	49,633	100.0	69,859	100.0	70,820	100.0	74,340	100.0	78,375	100.0	85,658	100.0	429,185	100.0
Private														
Case type	2011	2012	2013	2014	2015	2016	2016	2016	2016	2016	2016	2016	All years	All years
	n	%	n	%	n	%	n	%	n	%	n	%	n	%
Medical	13,273	9.6	16,781	10.8	17,941	10.9	17,179	10.6	14,527	9.1	13,586	9.4	93,287	10.1
Short-stay	58,296	42.3	65,294	41.8	70,460	42.9	67,844	41.9	69,887	44.0	60,940	42.2	392,721	42.5
Medium-stay	1,655	1.2	2,104	1.3	2,160	1.3	2,140	1.3	2,005	1.3	1,790	1.2	11,854	1.3
Long-stay	73,224	53.1	84,179	53.9	90,561	55.2	87,163	53.8	86,419	54.4	76,316	52.8	497,862	53.9
<i>All medical cases</i>	69,467	-	77,892	-	79,492	-	80,966	-	77,297	-	72,612	-	457,726	-
Surgical	62,119	45.0	69,229	44.4	70,922	43.2	72,038	44.5	68,552	43.2	64,111	44.4	406,971	44.1
Procedures	3,771	-	3,928	-	3,889	-	4,301	-	5,818	-	6,206	-	27,913	-
Procedures	2,627	1.9	2,667	1.7	2,622	1.6	2,853	1.8	3,839	2.4	4,058	2.8	18,666	2.0
Total cases	137,970	100.0	156,075	100.0	164,105	100.0	162,054	100.0	158,810	100.0	144,485	100.0	923,499	100.0

There was limited variation across 2011–2016 in terms of total cases, the exception being 2011, during which not all hospitals were transmitting discharge diagnoses to the MoPH hospitalization database until June 2011. We observed a minor decrease of surgical cases (absolute and relative) and medical short-stay cases in 2015 and 2016.

Approximately one in every three hospitalizations occurs in public hospitals. The proportion of hospitalization at public hospitals increased from 31% to 37% between 2012 and 2016. Most of this change is due to increased medical cases (32% to 41%) and, to a lesser extent, increasing surgical cases in public hospitals (30% to 33%).

Impact on CMI level and trend, across public and private hospitals (Objective 1)

Pre-intervention

The pre-intervention CMI monthly coefficients were 0.975, 1.284 and 1.783 for each of medical, surgical and mixed cases, respectively. Among medical cases, CMI was lowest for short-stays (0.352) and highest for long-stay cases (3.326).

Post-intervention

Overall the intervention had variable impacts depending on case type and hospital ownership, resulting in either increased or unchanged CMI (see [Table 2](#), [Figure 1](#) and [Figure 2](#)).

a. Medical cases

A decreasing pre-intervention trend was reversed, resulting in an increasing trend across all hospitals. Large level changes in CMI were also found at two months post-intervention, among public and private hospitals. No level changes were found among medium-stay cases. Overall, the main impact was on short and medium-stay cases, specifically a level change in the former and a trend change in the latter.

b. Surgical cases

An increasing pre-intervention trend continued unchanged in the post-intervention period across all hospitals. However, among public hospitals the absence of a pre-intervention trend was replaced with an increasing CMI trend.

c. Mixed cases

The only change found among mixed cases was an increasing trend in the medical component of private hospital cases. This had minimal impact on the overall CMI, as mixed cases comprised a very modest proportion of all hospitalizations.

We observed seasonality in medical CMI, and in particular medium-stay cases, with a March minor peak, a July–August trough, and a November–December major peak. Surgical casemix seasonality was limited to private hospitals only, with an April–June major peak, and a November–December minor peak. Mixed casemix seasonality had March and October peaks.

Changes in diagnoses and procedures (Objective 2)

The number of medical case discharge ICD codes used across 2013–2016 was 3,164 for short-stay, 5,828 for medium-stay

and 1,566 for long-stay cases, and 3,911 CPT codes for surgical cases. The 20 selected codes in each case type accounted for a majority of the change in CMI (see [Table 3](#)).

CMI change

Codes with the greatest changes from pre- to post-intervention are displayed in [Table 4](#) (for detailed changes see [Table 5](#)). These included 2,970 fewer cases of abdominal and pelvic pain, 698 fewer cases of intestinal infectious diseases, 1,001 fewer cases of fever of unknown origin, and 783 fewer cases of essential hypertension; altogether this represents about 4.3% of all annual medical cases. The greatest change on medium-stay CMI was due to a decrease of 2,237 cases of diarrhea and gastroenteritis. Two forms of shifting were also noted among several codes: from medium to short-stay cases (e.g. A09, I10, I20-I25.9), and from three-digit to four-digit ICD10 codes (e.g. J18, J44, P22). The greatest change on short-stay CMI was due to the improved coding of chemotherapy cases under the relevant code (Z51.1) rather than under neoplasms (C00-D49).

Given the magnitude of the change in vaginal deliveries, we further examined deliveries throughout 2013–2016 (vaginal and cesarean section). Private hospitals had 36.9% less vaginal deliveries (4,022) in 2015–2016 than in 2013–2014, while public hospitals increased by less than 1%. The decreasing trend in private hospitals began in early 2014, which was prior to the P4P intervention in late 2014. Concurrently, cesarean deliveries decreased at private hospitals by 7.5% and increased at public hospitals by 9.2%. The latter change also had an impact in increasing surgical CMI at public hospitals. Overall, vaginal deliveries under MoPH coverage decreased by 21.0% (18,843 to 14,894), while cesarean deliveries decreased by 2.5% in the aforementioned two-year periods (23,607 to 23,011).

CMI share change

The range of change of CMI share per code from pre- to post-intervention is shown in [Table 3](#). The conditions with the greatest change in their share of CMI included: percutaneous transluminal coronary angioplasty (PTCA) and vaginal delivery (surgical); malignant neoplasm of breast and acute lymphoblastic leukemia (short-stay); bronchopneumonia, diarrhea and gastroenteritis (medium-stay) (see [Table 5](#)).

Discussion

This study investigated the impact of integrating a P4P policy on the complexity of hospitalizations at hospitals contracted by the Lebanese Ministry of Public Health. We found that the intervention resulted in increased case complexity, specifically among medical cases. We used a systematic approach, first examining all hospitalizations by case type, lengths of stay and hospital ownerships for changes, and subsequently identifying and quantifying which diagnoses and procedures explain this change.

Case complexity was greatest for mixed cases, followed by surgical and medical cases. This was unsurprising considering that mixed cases are typically more complex and include ICU cases. Furthermore, a large proportion of medical cases are for short-term evaluation, basic treatment, or chemotherapy.

Table 2. Results of the interrupted time-series analysis (ITSA) on casemix index at Lebanese hospitals, adjusted for seasonality, 2011–2016, with the intervention point of August 2014 (two-month effect lag).

a. Summary of changes		Before intervention			After intervention				
		Hospitals	Monthly CMI coefficient	TREND		TREND	LEVEL		
				% (CI)	Explained by		% (CI)	Explained by	
Medical	All		0.975	↘ 0.10% (0.06 - 0.13%)		↗ 0.11% (0.02 - 0.21%)	Medium-stay cases	↗ 2.25% (0.51 - 3.98%)	Short-stay cases
	Public		0.941	↘ 0.17% (0.11 - 0.23%)	Medium-stay cases	↗ 0.15% (0.06 - 0.22%)	-	-	-
	Private		0.989	↘ 0.06% (0.01 - 0.11%)	-	↗ 0.19% (0.06 - 0.32%)	Short-stay cases	↗ 2.70% (0.15 - 5.24%)	Short-stay cases
Surgical	All		1.284	↗ 0.05% (0.01 - 0.10%)	-	↗ 0.14% (0.06 - 0.21%) ¹	-	-	-
	Public		1.179	-	No trend	↗ 0.13% (0.02 - 0.24%)	-	-	-
	Private		1.326	↘ 0.12% (0.03 - 0.21%)	-	↗ 0.24% (0.13 - 0.35%) ²	-	-	-
Mixed	All		1.783	-	-	-	No trend	-	-
	Public		1.964	-	No trend	-	No trend	-	-
	Private		1.689	-	-	↗ 0.35% (0.10 - 0.60%) ³	-	-	-

¹p=0.06, ²p=0.11, ³p=0.33, no significant change between pre and post-intervention

b. Absolute changes in casemix index		MEDICAL			SURGICAL			MIXED		
		Hospitals	ITSA aspect	All stays	Short-stay	Medium-stay	Long-stay	All components	Medical component	Surgical component
All	Starting level		0.975	0.352	1.078	3.326	1.284	1.783	1.530	1.991
	Level at two months post-intervention	0.022	0.009	-	0.417	-	-	-	-	-
	Monthly trend, pre-intervention	-0.001	-	-0.001	-	0.001	0.001	0.001	-	-
All	Monthly trend, post-intervention	0.001	0.001	0.001	-	0.002	0.002	-	-	-
	Monthly trend, change	0.002	0.001	0.002	-	0.002	-	-	-	-

	Starting level	0.941	0.356	1.049	2.697	1.179	1.964	1.708	2.200	
Public	Level at two months post-intervention	-	0.007	-	-	-	-	-	-	
	Monthly trend, pre-intervention	-0.002	-	-0.001	-	-	-	-	-	
	Monthly trend, post-intervention	0.001	-	0.001	-	0.002	-	-0.014	-	
	Monthly trend, change	0.003	-	0.003	-	0.003	-	-	-	
	Starting level	0.989	0.352	1.089	3.498	1.326	1.689	1.421	1.906	
Private	Level at two months post-intervention	0.027	0.009	-	0.489	-	-	-	-	
	Monthly trend, pre-intervention	-0.001	-	-	-	0.002	-	-	-	
	Monthly trend, post-intervention	0.002	0.001	0.002	-	0.003	0.006	-	0.008	
	Monthly trend, change	0.003	0.001	0.002	-	-	-	-	-	
(Numerator only results significant at p<0.05)										
c. Relative changes, using respective monthly casemix index starting level, percentages										
		MEDICAL				SURGICAL		MIXED		
Hospitals	ITSA aspect	All stays	Short-stay	Medium-stay	Long-stay			All components	Medical component	Surgical component
	Starting level	0.975	0.352	1.078	3.326	1.284	1.783	1.530	1.991	
	Level at two months post-intervention	2.25%	2.61%	-	0.125	-	-	-	-	
	Monthly trend, pre-intervention	-0.10%	-	-0.06%	-	0.05%	-	-	-	
All	Monthly trend, post-intervention	0.11%	0.14%	0.09%	-	0.14%	-	-	-	
	Monthly trend, change	0.22%	0.17%	0.16%	-	-	-	-	-	
	Starting level	0.941	0.356	1.049	2.697	1.179	1.964	1.708	2.200	
	Level at two months post-intervention	-	2.05%	-	-	-	-	-	-	
Public	Monthly trend, pre-intervention	-0.17%	-	-0.12%	-	-	-	-	-	
	Monthly trend, post-intervention	0.15%	-	0.11%	-	0.13%	-	-0.81%	-	
	Monthly trend, change	0.31%	-	0.24%	-	0.22%	-	-	-	

Private	Starting level	0.989	0.352	1.089	3.498	1.326	1.689	1.421	1.906	
	Level at two months post-intervention	2.70%	2.56%	-	13.98%	-	-	-	-	-
Monthly trend, pre-intervention	-0.06%	-	-	-	0.12%	-	-	-	-	
Monthly trend, post-intervention	0.19%	0.23%	0.15%	-	0.24%	-	0.35%	-	0.41%	
Monthly trend, change	0.25%	0.28%	0.18%	-	-	-	-	-	-	
d. Confidence intervals for table 2b.										
Hospitals	ITSA aspect	MEDICAL				SURGICAL			MIXED	
		All stays	Short-stay	Medium-stay	Long-stay	All components	Medical component	Surgical component		
All	Starting level	0.9599 - 0.9896	0.3416 - 0.3630	1.0498 - 1.1068	2.5017 - 4.1500	1.2666 - 1.3013	1.3860 - 1.6741	1.6649 - 1.9012	1.8782 - 2.1043	
	Level at two months post-intervention	0.0050 - 0.0388	0.0031 - 0.0153	-	0.1414 - 0.6932	-	-	-	-	
	Monthly trend, pre-intervention	(0.0013 - 0.0006)	-	(0.0012 - 0.0003)	-	0.0001 - 0.0013	-	-	-	
	Monthly trend, post-intervention	0.0002 - 0.0020	0.0002 - 0.0007	0.0002 - 0.0017	-	0.0008 - 0.0027	-	-	-	
	Monthly trend, change	0.0012 - 0.0030	0.0002 - 0.0010	0.0008 - 0.0026	-	-	-	-	-	
Public	Starting level	0.9095 - 0.9723	0.3394 - 0.3728	1.0377 - 1.0593	1.3111 - 4.0834	1.0898 - 1.2691	1.5207 - 1.8947	1.7092 - 2.2188	1.8338 - 2.5664	
	Level at two months post-intervention	-	0.0012 - 0.0135	-	-	-	-	-	-	
	Monthly trend, pre-intervention	(0.0022 - 0.0010)	-	(0.0017 - 0.0010)	-	-	-	-	-	
	Monthly trend, post-intervention	0.0006 - 0.0021	-	0.0009 - 0.0015	-	0.0002 - 0.0028	(0.0254 - 0.0024)	-	-	
	Monthly trend, change	0.0019 - 0.0039	-	0.0020 - 0.0030	-	0.0007 - 0.0046	-	-	-	
Private	Starting level	0.9657 - 1.0117	0.3409 - 0.3628	1.0523 - 1.1258	2.7808 - 4.2154	1.2820 - 1.3702	1.2363 - 1.6055	1.6016 - 1.7767	1.8291 - 1.9833	
	Level at two months post-intervention	0.0015 - 0.0518	0.0012 - 0.0169	-	0.1433 - 0.8347	-	-	-	-	
	Monthly trend, pre-intervention	(0.0011 - 0.0001)	-	-	-	0.0004 - 0.0028	-	-	-	
	Monthly trend, post-intervention	0.0006 - 0.0032	0.0004 - 0.0013	0.0002 - 0.0030	-	0.0017 - 0.0047	-	0.0017 - 0.0101	0.0018 - 0.0139	
	Monthly trend, change	0.0012 - 0.0038	0.0004 - 0.0016	0.0004 - 0.0035	-	-	-	-	-	

(Numerating only results significant at p<0.05)

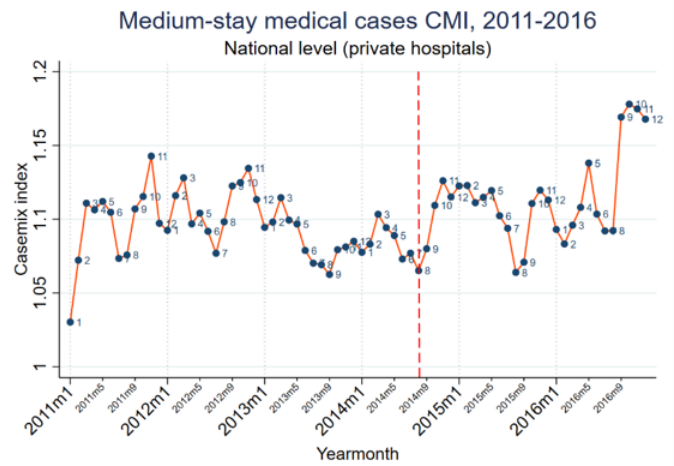
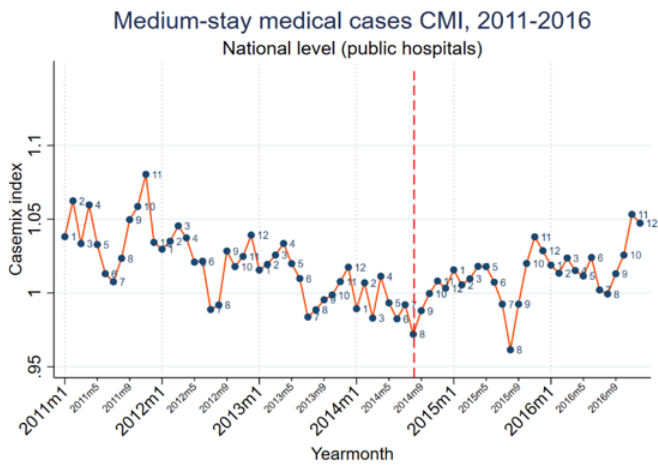
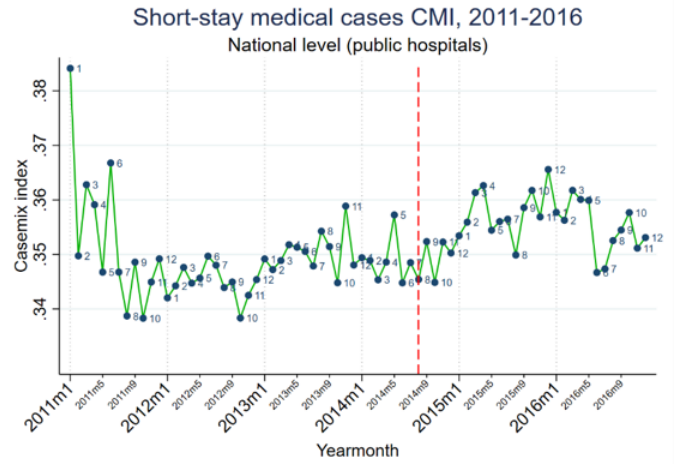
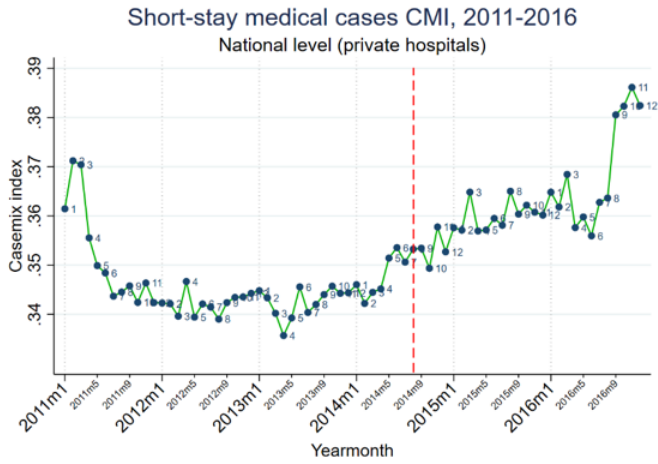


Figure 1. Medical short and medium-stay hospitalizations monthly casemix index (CMI), at public and private hospitals, unadjusted, 2011–2016.

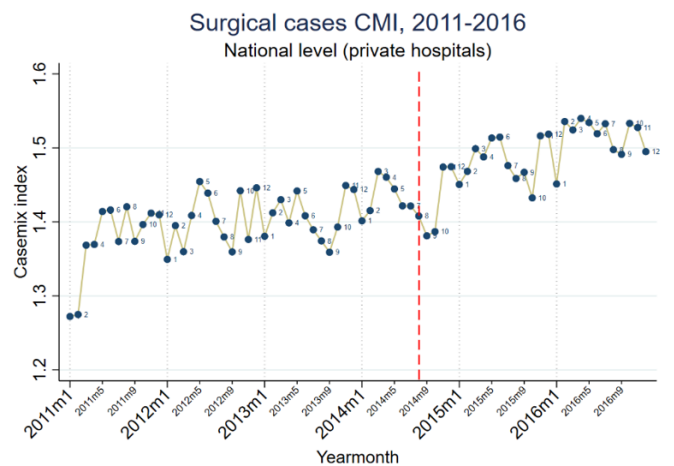
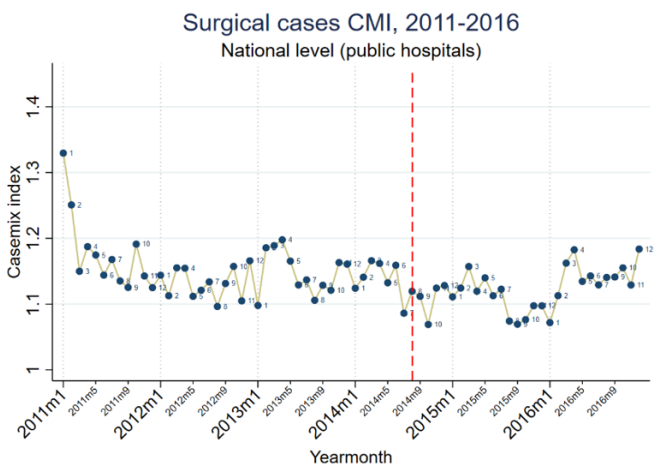


Figure 2. Surgical hospitalizations monthly casemix index (CMI), at public and private hospitals, 2011–2016.

Table 3. Summary results of casemix index (CMI) changes due diagnoses and procedures within different case types.

Case type		Number of codes (n)	Top 20 codes proportion of total cases (%)	Range of change in CMI share per code (%)
Medical	Short-stay	3,164	94.1%	-3.1% to 0.6%
	Medium-stay	5,828	80.6%	-0.8% to 1.4%
	Long-stay	1,566	55.8%	-0.7% to 1.4%
Surgical		3,911	96.2%	-0.6% to 1.3%

Similar reasoning explains medical casemix increasing with longer stays.

Medical casemix: decreased unnecessary hospitalizations and improved coding

During the pre-intervention period, medical casemix had a decreasing trend, possibly as a result of increasing unnecessary hospitalizations, for which an incentive exists. The intervention resulted in a reversal to an increasing casemix trend, as well as a short-term level change, at both public and private hospitals. The trend and level changes are attributable to medium and short-stay cases, respectively.

The decrease in diarrhea and gastroenteritis cases had a greater effect on medium-stay casemix than any other condition. Diarrhea and gastroenteritis cases are likely to be responsible for more unnecessary hospitalizations than any other diagnosis (Kronfol *et al.*, 2014; To *et al.*, 1996). Similar decreases were also found in abdominal and pelvic pain, essential hypertension cases and fever of unknown origin, all being major sources of unnecessary hospitalizations (Kronfol *et al.*, 2014). It is relevant to highlight that some of these conditions are more precisely symptoms (e.g. pain), which are not generally appropriate as discharge diagnoses and likely to be unnecessary hospitalizations. We find that the intervention decreased unnecessary hospitalizations by changing admission practices for these four conditions. The change in absolute cases for these conditions were at least one order of magnitude greater than any such changes since 2011 and are unlikely to be due to decreased disease burden.

We also found large shifts from medium to short-stay cases among each of diarrhea and gastroenteritis, abdominal and pelvic pain and essential hypertension cases. This suggests that hospitals not only decreased unnecessary hospitalizations, but also decreased unnecessary hospital stays. Although changes in length of stay are often difficult to associate with quality of care, among such conditions it is likely a result of improved hospital practices during hospitalization, in addition to the aforementioned improved pre-hospitalization practices. Such changes were seen among both public and private hospitals.

The large increase in chronic obstructive pulmonary disease (COPD) cases may be influenced by both practice changes and increasing burden. A steady increase in global COPD has been noted, with smoking prevalence and air pollution being the major risk factors (Lopez *et al.*, 2006). These two factors are also prevalent in Lebanon, and are likely to have contributed to the increased COPD burden (IHME, 2018). It is also possible that improved hospital admission practices influenced this increase. The increases in pneumonia and acute bronchitis cases are likely due to increased disease burden, with yearly and seasonal variations typical of infectious disease. We note the possibility of COPD acute exacerbation of COPD being misdiagnosed as acute bronchitis, as well as acute bronchitis also having smoking as a risk factor.

Given that this intervention had no direct impact on the separately pre-determined hospital budgets, it may be argued that the decreases in unnecessary hospitalizations provided hospitals with greater resources to hospitalize more necessary hospitalizations, such as COPD, pneumonia and acute bronchitis. Confirmation of such an impact would, however, require further investigation.

The decrease in ischemic heart disease cases, including a length of stay shift, may be associated with the concurrent increase in percutaneous transluminal coronary angioplasty (PTCA), which is indicated for certain ischemic heart disease cases. PTCA over-utilization has been documented in other healthcare systems and has had decreasing use in recent years (Mariatto *et al.*, 1999; Weiss & Elixhauser, 2014). It is not possible to evaluate medically indicated PTCA cases in this study, and further investigation would be required to ascertain the level of benefit or abuse.

The code-level findings indicate improved coding practices, which has been documented elsewhere to occur alongside real case changes following the introduction of CMI (Ginsburg & Carter, 1986; Goldfarb & Coffey, 1992). The improved coding for chemotherapy, particularly in breast cancer and leukemia, explained most of the short-stay casemix increase. Among medium and short-stays we find a shift to full coding digits and

Table 4. Diagnoses and procedures with the greatest change effect on casemix index (CMI), pre- versus post-intervention.

Description	ICD/CPT code	Major effects	Notes
Neoplasms	C00-D49	Increased ss-CMI (87%)	Greatest change on ss-CMI ↓10,179 cases, net Mainly due to malignant neoplasm of breast and acute lymphoblastic leukemia Concurrent with increase in chemotherapy Z51.1 ↑11,666 cases
Intestinal infectious diseases (category)	A00-A09		↓961 ms-cases; ↑263 ss-cases
Diarrhea and gastroenteritis of presumed infectious origin	A09	Increased ms-CMI (25%)	Greatest change on ms-CMI ↓2,237 ms-cases; ↑179 ss-cases
Unspecified non-infective gastroenteritis and colitis	K52.9	Decreased ms-CMI (2%)	↓745 ms-cases; ↓108 ss-cases
Abdominal and pelvic pain (category)	R10-R10.4		↑2,970 ms-cases, net
Abdominal and pelvic pain, other/ unspecified abdominal pain	R10, R10.4	Increased ms- and ss-CMI	↓1,975 ms-cases; ↑174 ss-cases
Influenza and pneumonia	J09-J18	Decreased ms-CMI (4%)	↑3,909 ms-cases; ↑298 ss-cases
Pneumonia, non-specific	J18		↓1,456 ms-cases
Pneumonia, specific	J18.0, J18.9		↑4,692 ms-cases
COPD	J44-J44.9	Increased ms-CMI (5%)	↑1,306 ms-cases, net
COPD with acute exacerbation	J44.1		↑625 ms-cases
COPD, non-specific	J44		↓234 ms-cases
Acute bronchitis	J20-J20.9	Decreased ms-CMI (3%)	↑1,145 ms-cases
	J20		↑747 ms-cases
Essential hypertension	I10		↓957 ms-cases; ↑174 ss-cases
Ischemic heart diseases	I20-I25.9	Decreased ms-CMI (7%)	↓1,100 ms-cases; ↑275 ss-cases Mainly due to angina pectoris and acute myocardial infarction
Fever of unknown origin	R50	Increased ms-CMI (3%)	↓989 ms-cases; ↓12 ss-cases
Stroke	I64	Decreased ms-CMI (2%)	↓383 ms-cases; ↑12 ss-cases
Respiratory distress of newborn, non-specific	P22		↓334 ms-cases
Respiratory distress of newborn, specific	P22.0		↑287 ms-cases
Vaginal delivery	F9410L1	Increased surgical CMI (43%)	↓3,939 cases Greatest change in absolute and in CMI share among all ICD/CPT codes
Percutaneous Transluminal Coronary Angioplasty (PTCA)	X2983/6	Increased surgical CMI (36%)	↑778 cases

ss, short-stay; ms, medium-stay; COPD, chronic obstructive pulmonary disease; ICD, International Classification of Diseases; CPT, Common Procedural Terminology.

Table 5. Identifying diagnoses/procedures with the greatest change in terms of casemix index, from pre-intervention to post-intervention.

a. Short-stay medical cases								
#	ICD code	Cases (n) 2013–2014	Cases (n) 2015–2016	Change in cases (n)	Change in cases (%)	Change in CMI share, relative	Change in CMI, relative	Description
1	C50	5,776	3,384	-2,392	-41.4%	-3.1%	43.3%	Malignant neoplasm of breast
2	C91.0	2,873	1,223	-1,650	-57.4%	-2.4%	19.9%	Acute lymphoblastic leukaemia
3	C76	297	89	-208	-70.0%	-0.6%	5.9%	Malignant neoplasm of other and ill-defined sites
4	C50.9	5,550	4,744	-806	-14.5%	-0.5%	5.2%	Breast, unspecified
5	C91	680	130	-550	-80.9%	-0.7%	5.1%	Lymphoid leukaemia
6	E88.0	92	2	-90	-97.8%	-0.4%	4.0%	Disorders of plasma-protein metabolism, not elsewhere classified
7	C90.0	1,135	474	-661	-58.2%	-0.9%	3.7%	Multiple myeloma
8	C25.9	524	130	-394	-75.2%	-0.6%	1.9%	Pancreas, unspecified
9	Z51	427	21	-406	-95.1%	-0.6%	1.5%	Other medical care
10	I10	697	871	174	25.0%	0.6%	0.7%	Essential (primary) hypertension
11	C18.9	1,046	691	-355	-33.9%	-0.5%	0.4%	Colon, unspecified
12	Z51.8	6	106	100	1666.7%	0.1%	0.3%	Other specified medical care
13	I46.9	82	103	21	25.6%	0.2%	0.3%	Cardiac arrest, unspecified
14	C56	1,414	947	-467	-33.0%	-0.6%	0.3%	Malignant neoplasm of ovary
15	N18	86	134	48	55.8%	0.2%	0.3%	Chronic renal failure
16	I25.1	13	38	25	192.3%	0.1%	0.3%	Atherosclerotic heart disease
17	I21.9	25	49	24	96.0%	0.1%	0.3%	Acute myocardial infarction, unspecified
18	I20.0	177	244	67	37.9%	0.3%	0.3%	Unstable angina
19	A09	947	1,126	179	18.9%	0.5%	0.3%	Diarrhoea and gastroenteritis of presumed infectious origin
20	I48	77	142	65	84.4%	0.2%	0.3%	Atrial fibrillation and flutter
b. Medium-stay medical cases								
#	ICD code	Cases (n) 2013–2014	Cases (n) 2015–2016	Change in cases (n)	Change in cases (%)	Change in CMI share, relative	Change in CMI, relative	Description
1	A09	18,440	16,203	-2,237	-12.1%	-0.8%	25.0%	Diarrhoea and gastroenteritis of presumed infectious origin
2	I21	745	350	-395	-53.0%	-0.5%	7.8%	Acute myocardial infarction
3	P22.0	420	707	287	68.3%	0.3%	6.1%	Respiratory distress syndrome of newborn
4	J18.0	6,487	10,134	3,647	56.2%	1.4%	5.6%	Bronchopneumonia, unspecified
5	J44.1	439	1,064	625	142.4%	0.5%	5.0%	Chronic obstructive pulmonary disease with acute exacerbation, unspecified
6	R10	11,406	10,034	-1,372	-12.0%	-0.6%	4.4%	Abdominal and pelvic pain
7	I46.9	127	262	135	106.3%	0.2%	3.3%	Cardiac arrest, unspecified
8	R50	3,348	2,359	-989	-29.5%	-0.4%	2.8%	Fever of unknown origin
9	K52.9	2,343	3,088	745	31.8%	0.2%	2.4%	Noninfective gastroenteritis and colitis, unspecified

10	Z38.0	75	262	187	249.3%	0.2%	2.4%	Singleton, born in hospital
11	P22	1,369	1,035	-334	-24.4%	-0.3%	2.4%	Respiratory distress of newborn
12	J20	2,291	3,038	747	32.6%	0.2%	2.4%	Acute bronchitis
13	R07.0	306	137	-169	-55.2%	-0.2%	2.0%	Pain in throat
14	A41.9	525	708	183	34.9%	0.2%	1.8%	Septicaemia, unspecified
15	I64	1,454	1,071	-383	-26.3%	-0.3%	1.7%	Stroke, not specified as haemorrhage or infarction
16	A08.4	206	804	598	290.3%	0.2%	1.3%	Viral intestinal infection, unspecified
17	J18.9	2,079	3,124	1,045	50.3%	0.6%	1.2%	Pneumonia, unspecified
18	J98	166	3	-163	-98.2%	-0.2%	1.1%	Other respiratory disorders
19	R10.4	3,167	2,564	-603	-19.0%	-0.2%	1.1%	Other and unspecified abdominal pain
20	G81.9	428	198	-230	-53.7%	-0.2%	1.0%	Hemiplegia, unspecified

c. Long-stay medical cases

#	ICD code	Cases (n) 2013–2014	Cases (n) 2015–2016	Change in cases (n)	Change in cases (%)	Change in CMI share, relative	Change in CMI, relative	Description
1	P22	215	108	-107	-49.8%	-0.4%	17.9%	Respiratory distress of newborn
2	F20.9	1	31	30	3000.0%	1.4%	4.9%	Schizophrenia, unspecified
3	F25.0	2	26	24	1200.0%	1.1%	3.1%	Schizoaffective disorder, manic type
4	A41.9	74	121	47	63.5%	0.3%	2.7%	Septicaemia, unspecified
5	I20	74	32	-42	-56.8%	-0.2%	2.5%	Angina pectoris
6	F10	39	6	-33	-84.6%	-0.1%	2.5%	Mental and behavioural disorders due to use of alcohol
7	F11	45	13	-32	-71.1%	0.0%	2.4%	Mental and behavioural disorders due to use of opioids
8	G81	49	11	-38	-77.6%	-0.2%	2.4%	Hemiplegia
9	J98	42	0	-42	-100.0%	-0.2%	2.2%	Other respiratory disorders
10	I50	139	102	-37	-26.6%	-0.1%	2.1%	Heart failure
11	F20.0	88	58	-30	-34.1%	0.0%	2.0%	Paranoid schizophrenia
12	Z38.0	18	55	37	205.6%	0.2%	1.7%	Singleton, born in hospital
13	P22.0	114	149	35	30.7%	0.3%	1.5%	Respiratory distress syndrome of newborn
14	F11.2	0	16	16		0.7%	1.4%	Mental and behavioural disorders due to use of opioids, dependence syndrome
15	M96.9	16	0	-16	-100.0%	-0.7%	1.4%	Postprocedural musculoskeletal disorder, unspecified
16	F25	45	21	-24	-53.3%	0.0%	1.3%	Schizoaffective disorders
17	R10.0	28	6	-22	-78.6%	0.0%	1.0%	Acute abdomen
18	I46.9	38	73	35	92.1%	0.3%	1.0%	Cardiac arrest, unspecified
19	J18.9	72	99	27	37.5%	0.2%	0.9%	Pneumonia, unspecified
20	G45.9	13	37	24	184.6%	0.1%	0.9%	Transient cerebral ischaemic attack, unspecified

d. Surgical cases								
#	CPT code	Cases (n) 2013–2014	Cases (n) 2015–2016	Change in cases (n)	Change in cases (%)	Change in CMI share, relative	Change in CMI, relative	Description
1	F9410L1	18,833	14,894	-3,939	-20.9%	-0.6%	43.4%	Vaginal delivery only including postpartum care
2	X2986L1	1,153	1,687	534	46.3%	1.3%	33.7%	Percutaneous transluminal coronary angioplasty: with stent; each additional vessel
3	M7447G1	745	954	209	28.1%	0.5%	4.9%	Arthroplasty, knee condyle and plateau ("total knee replacement")
4	C3510G	1,323	1,179	-144	-10.9%	-0.3%	3.2%	Coronary artery bypass, vein only: any number W/CPB
5	X2983L1	3,154	3,398	244	7.7%	0.5%	2.2%	Percutaneous transluminal coronary angioplasty: with stent
6	C3000Gb	423	809	386	91.3%	0.4%	1.5%	Cardiopulmonary bypass, including cannulation: add to primary procedure (W/CPB)
7	X3548L	11,900	12,556	656	5.5%	0.2%	1.1%	Combined left heart catheterization, selective coronary angiography, one or more.
8	C3411G	189	115	-74	-39.2%	-0.2%	1.0%	Replacement, aortic valve: w/wout aortic annulus enlargement, mechanical.
9	M7125G1	294	447	153	52.0%	0.2%	0.7%	Partial hip replacement, prosthesis (eg, femoral stem prosthesis, bipolar arthroplasty)
10	R0140Gb	3,600	3,959	359	10.0%	0.0%	0.7%	Submucous resection turbinate, complete or partial
11	M2842G1	346	450	104	30.1%	0.2%	0.7%	Spinal instrumentation, posterior: segmental fixation.
12	M7130G1	622	715	93	15.0%	0.2%	0.6%	Arthroplasty, acetabular and proximal femoral prosthetic replacement (Age <60y)
13	F9812G	3,386	2,959	-427	-12.6%	-0.1%	0.5%	Treatment of incomplete or missed abortion, any trimester, completed surgically
14	M2843G1	108	182	74	68.5%	0.1%	0.4%	Spinal instrumentation, posterior: segmental fixation
15	X2987L	23	58	35	152.2%	0.1%	0.4%	Closure of PDA or ASD by Amplatzer
16	C3411Ga	44	9	-35	-79.5%	-0.1%	0.3%	Replacement, aortic valve: w/wout aortic annulus enlargement, biological.
17	C5301G	132	94	-38	-28.8%	-0.1%	0.2%	Thromboendarterectomy, with or without patch graft
18	U2332Gb	656	852	196	29.9%	0.0%	0.2%	Cystourethroscopy, with insertion of indwelling ureteral stent
19	D2820G	2,651	2,349	-302	-11.4%	0.0%	0.2%	Tonsillectomy with or without adenoidectomy
20	M7715G	111	25	-86	-77.5%	-0.1%	0.2%	Osteoplasty, tibia and fibula, lengthening

ICD, International Classification of Diseases; CPT, Common Procedural Terminology; CMI, casemix index; CPB, cardiopulmonary bypass; PDA, patent ductus arteriosus; ASD, atrial septal defect.

more specific codes, specifically among neoplasms, pneumonia, COPD, respiratory distress of newborn, and diarrhea and gastroenteritis.

Surgical casemix

Changes in surgical casemix were limited to public hospitals only, with an increasing trend emerging in the post-intervention period. This was explained by increased cesarean deliveries in public hospitals, which compensated a concurrent decrease in private hospitals, and was identified as a trend preceding the intervention by several months, and therefore not likely impacted by the intervention itself.

Private hospitals continued their increasing casemix trend without any change following the intervention. This trend was explained by two factors: increasing PTCA cases throughout 2011–2016 and decreasing vaginal deliveries since early 2014. The former may also be an example of private hospitals being faster adopters of new technologies than public hospitals or having greater potential for over-utilization. We had expected to find new (and costlier) procedures such as PTCA to explain a large proportion of an increasing surgical casemix at all hospitals. However, with the exception of PTCA, adoption of new procedures had a negligible effect on surgical casemix.

The large decrease in vaginal deliveries at private hospitals coincides with the sharp increase into Lebanon of refugees from Syria in early 2014. This change was not compensated by public hospitals, whose vaginal deliveries remained generally unchanged. Deliveries had been documented in 2013 as the leading cause for hospitalization among Syrian refugees in Lebanon (Huster *et al.*, 2014). This suggests that, under MoPH coverage, Lebanese women having vaginal deliveries had decreased access to private hospitals, or otherwise opted to deliver outside of this coverage (out-of-pocket payment). The hospitalization access of refugee and citizen communities requires further investigation, including the role of private hospitals.

Improvement potential, hospital ownership, and seasonality

Hospitals had a greater improvement space in medical cases than in surgical cases. Prior to the intervention, medical ICD10 coding had no link to reimbursement (fee-for-service), unlike surgical codes (flat-fee). The intervention incentivized improved medical coding (for accurate CMI assessment), but the same was not relevant for surgical coding.

Private hospitals had a greater overall casemix than public hospitals, suggesting that more complex cases were admitted to private hospitals, as had been observed in previous MoPH investigations (Ammar *et al.*, 2013). However, private and public hospitals had similar short-stay casemix, while public hospitals had a higher casemix for mixed cases. Two factors at private hospitals that are relevant to note are their possibly greater capacity for accurate coding and for healthcare technology. The former has been found elsewhere to explain some of

the casemix gap between public and private hospitals, while the latter is associated with increased casemix (Mendez *et al.*, 2014; Park *et al.*, 2017).

We also note the increasing proportion of hospitalizations at public hospitals throughout 2011–2016, which continues the trend observed by the MoPH for preceding years. Since the proportion of contracted public and private hospitals had remained relatively unchanged, this is attributable to the MoPH's broad policy of increasing the service delivery carried out at public rather than private hospitals.

The seasonality in the casemix within different case types is likely explained by a combination of disease burden variation throughout the year, and pre-planned hospitalizations that avoid vacation periods. The November-December peak for medical medium-stay may be related to influenza seasonality in Lebanon (World Health Organization, 2019). Further investigations would be required to associate casemix seasonality with specific diseases or conditions. It is noteworthy that surgical casemix seasonality was found only in private hospitals, peaking during the three months preceding the summer period, which suggests that pre-planned hospitalizations are more common in private than in public hospitals.

P4P design

The importance of detailing P4P designs has been highlighted, particularly considering the heterogeneity of such interventions (Chee *et al.*, 2016). Notable design features of the MoPH P4P is the linkage between performance and reimbursement tier, rather than a bonus/penalty. To our knowledge this has not been undertaken elsewhere. In Lebanon, such a feature was a result of the political and financial non-feasibility of having other financial mechanisms to reward hospitals for improved performance. However, this has the benefit of being more sustainable in avoiding bonus financing and maintaining a system aspect (tiers) familiar to hospitals. In effect, the design integrated P4P into the system of determining hospital reimbursement tier (Soucat *et al.*, 2017).

Another feature is the inclusion of CMI directly within the performance scoring, rather than as a risk adjustor for other outcomes (e.g. readmissions). This focus on casemix was intended to address unnecessary hospitalization, as well as the absence of risk-adjustment in hospital assessment. It also formed an objective that may be influenced by a wide range of hospitalizations, rather than a narrow set.

The type and magnitude of incentives are also important factors in determining P4P impact. Having casemix incentivized outside of a prospective payment system or similar approach likely limited the potential of providers to engage in up-coding or otherwise game the system, as has been observed in other casemix evaluations (Radu *et al.*, 2010; Sukul *et al.*, 2019). Such behavior is further limited as providers do not have access to the weights used in casemix evaluation.

Strengths and limitations

The use of ITS analysis with a large number of pre and post-intervention data points allowed us to account for background effects in what is a complex environment. Such effects may include other interventions or events that may have impacted hospitalization practice or burden of disease. No relevant system interventions were carried out by the MoPH throughout 2011–2016, besides the new intervention evaluated in this work. Other quality-focused activities undertaken by hospitals individually have not been assessed, though these are less likely to have system-level impact.

We relied on the data that is collected and input at hospital-level, and subsequently used to calculate CMI. As such, the validity of the casemix results relies on the quality of data input, specifically ICD10 and CPT codes. The intervention of August 2014 included advice to hospitals regarding improved coding accuracy, whose short-term results have been detected with CMI level changes. However, we do not account for coding quality initiatives that may have occurred within hospitals.

We recognize that the inclusion of age and comorbidities in the calculation of casemix index would allow a more accurate measure of hospitalization case complexity. Within the Lebanese healthcare setting there currently is insufficient information for selecting diagnoses and procedures for adjustment by age. The absence of comorbidity is due to the lack of routine recording of this variable across most hospitals, and policymaker concerns regarding potential miss-use. Age and comorbidities remain important areas for future development of casemix calculation and pay-for-performance, but their absence does not negate the findings of the current investigation.

Conclusions

This research suggests that the integration of a hospital performance-payment policy in 2014 increased the effectiveness of the healthcare system, primarily due to decreased unnecessary hospitalizations, as well as a decreased length of stay of such cases. An improvement in quality of care may subsequently benefit patient health and resource use (efficiency). The new policy also led to improved discharge coding quality. Although unrelated to effectiveness, the latter finding increases the validity of evidence and policymaking that makes use of such information, including but not limited to the P4P design. Changes in unnecessary hospitalizations took place at a gradual pace compared to the more immediate coding practice changes. We also confirm that CMI can be appropriate tool to detect changes in hospitalizations or performance improvement.

By using a systems perspective, we were able to investigate the impact across different hospitalization case types, length of stay and hospital ownership, and went further to quantify and attribute changes to specific diagnoses and procedures. We

also identified issues relevant for further investigation and policymaking (e.g. vaginal deliveries, COPD, ischemic heart disease treatment).

A similar analytical approach using interrupted time series may be used in the evaluation of other interventions on the hospitalization system. The algorithms developed for this research may also be adapted to investigate specific issues, as well as by a regulator or payer to actively monitor hospitalization trends across code and hospital attributes. This would support keeping providers accountable and increase the responsiveness capacity to address non-desirable or harmful hospitalization practices, such as unnecessary hospitalizations.

Despite the generally unfavorable evidence regarding the effectiveness of P4P in hospital settings, our findings suggest that certain P4P designs may be effective in specific contexts, such as that of the MoPH and Lebanese hospitals. This may be in part due to its integration within the system, rather than as a stand-alone external intervention, in addition to the existing space for improvement.

Future investigations would be required to evaluate longer-term impact, which would inform whether the impact was a one-time result of introducing a new policy, or if it retains sustainable benefits. This would necessarily require continued commitment and capacity-building by the MoPH towards this process.

Our findings suggest that effective hospital regulation can be achieved through the systematic collection and analysis of readily available routine data. Our analytical approach to such data reveals relevant patterns of change to performance measures. LMICs that lack casemix adjustment and incentives for improving hospital performance may choose to adopt similar approaches and monitoring systems to measure and improve hospital performance over time.

Data availability

Underlying data

The source data are owned by the Lebanese Ministry of Public Health and in line with the IRB approval granted for this study, the authors are not permitted to share the source patient-level data. In compliance with the MoPH's obligation on data privacy, the underlying data are accessible in a de-identified form upon request to the Ministry of Public Health (directorgeneral@moph.gov.lb), including a justification for the request.

Acknowledgements

We would like to thank Anne Mills (London School of Hygiene and Tropical Medicine, project senior advisor); Anders Halling and Johan Jarl (Lund University, for feedback on an earlier draft); and the contributions of the following individuals in hospital performance activities at the Lebanese MoPH: Jihad Makouk, Rita Freiha, Abeer El Halabi and Elise Barakat.

References

- Ammar W: **Health system and reform in Lebanon**. Entreprise universitaire d'études et de publications. 2003.
[Reference Source](#)
- Ammar W: **Health beyond politics**. 2009.
[Reference Source](#)
- Ammar W, Khalife J, El-Jardali F, et al.: **Hospital Accreditation, Reimbursement and Case Mix: Links and Insights for Contractual Systems**. *BMC Health Serv Res*. 2013; **13**: 505.
[PubMed Abstract](#) | [Publisher Full Text](#) | [Free Full Text](#)
- Ammar W, Wakim IR, Hajj I: **Accreditation of Hospitals in Lebanon: A Challenging Experience**. *East Mediterr Health J*. 2007; **13**(1): 138–149.
[PubMed Abstract](#)
- Bernal JL, Cummins S, Gasparrini A: **Interrupted Time Series Regression for the Evaluation of Public Health Interventions: A Tutorial**. *Int J Epidemiol*. 2016; **46**(1): 348–355.
[PubMed Abstract](#) | [Publisher Full Text](#) | [Free Full Text](#)
- Borghji J, Little R, Binyaruka P, et al.: **In Tanzania, the Many Costs of Pay-For-Performance Leave Open to Debate Whether the Strategy Is Cost-Effective**. *Health Aff (Millwood)*. 2015; **34**(3): 406–414.
[PubMed Abstract](#) | [Publisher Full Text](#)
- Caminiti C, Meschi T, Braglia L, et al.: **Reducing Unnecessary Hospital Days to Improve Quality of Care Through Physician Accountability: A Cluster Randomised Trial**. *BMC Health Serv Res*. 2013; **13**: 14.
[PubMed Abstract](#) | [Publisher Full Text](#) | [Free Full Text](#)
- Chee TT, Ryan AM, Wasfy JH, et al.: **Current State of Value-Based Purchasing Programs**. *Circulation*. 2016; **133**(22): 2197–2205.
[PubMed Abstract](#) | [Publisher Full Text](#) | [Free Full Text](#)
- Das A, Gopalan SS, Chandramohan D: **Effect of Pay for Performance to Improve Quality of Maternal and Child Care in Low- And Middle-Income Countries: A Systematic Review**. *BMC Public Health*. 2016; **16**: 321.
[PubMed Abstract](#) | [Publisher Full Text](#) | [Free Full Text](#)
- Donabedian A: **Evaluating the quality of medical care**. *Milbank Mem Fund Q*. 1966; **44**(3): Suppl: 166–206.
[PubMed Abstract](#) | [Publisher Full Text](#)
- Donabedian A: **The quality of care. How can it be assessed?** *JAMA*. 1988; **260**(12): 1743–8.
[PubMed Abstract](#) | [Publisher Full Text](#)
- Eijkenaar F, Emmert M, Scheppach M, et al.: **Effects of pay for performance in health care: a systematic review of systematic reviews**. *Health Policy*. 2013; **110**(2–3): 115–30.
[PubMed Abstract](#) | [Publisher Full Text](#)
- Emmert M, Eijkenaar F, Kemter H, et al.: **Economic evaluation of pay-for-performance in health care: a systematic review**. *Eur J Health Econ*. 2012; **13**(6): 755–67.
[PubMed Abstract](#) | [Publisher Full Text](#)
- Gergen J, Josephson E, Coe M, et al.: **Quality of Care in Performance-Based Financing: How It Is Incorporated in 32 Programs Across 28 Countries**. *Glob Health Sci Pract*. 2017; **5**(1): 90–107.
[PubMed Abstract](#) | [Publisher Full Text](#) | [Free Full Text](#)
- Gillam SJ, Siriwardena AN, Steel N: **Pay-for-performance in the United Kingdom: impact of the quality and outcomes framework: a systematic review**. *Ann Fam Med*. 2012; **10**(5): 461–8.
[PubMed Abstract](#) | [Publisher Full Text](#) | [Free Full Text](#)
- Ginsburg PB, Carter GM: **Medicare case-mix index increase**. *Health Care Financ Res*. 1986; **7**(4): 51–65.
[PubMed Abstract](#) | [Free Full Text](#)
- Goldfarb MG, Coffey RM: **Change in the Medicare case-mix index in the 1980s and the effect of the prospective payment system**. *Health Serv Res*. 1992; **27**(3): 385–415.
[PubMed Abstract](#) | [Free Full Text](#)
- Grace FC, Meurk CS, Head BW, et al.: **An analysis of policy levers used to implement mental health reform in Australia 1992-2012**. *BMC Health Serv Res*. 2015; **15**: 479.
[PubMed Abstract](#) | [Publisher Full Text](#) | [Free Full Text](#)
- Gupta A, Fonarow GC: **The Hospital Readmissions Reduction Program-learning from failure of a healthcare policy**. *Eur J Heart Fail*. 2018; **20**(8): 1169–1174.
[PubMed Abstract](#) | [Publisher Full Text](#) | [Free Full Text](#)
- Habicht JP, Victora CG, Vaughan JP: **Evaluation designs for adequacy, plausibility and probability of public health programme performance and impact**. *Int J Epidemiol*. 1999; **28**(1): 10–8.
[PubMed Abstract](#) | [Publisher Full Text](#)
- Hornbrook MC: **Hospital case mix: its definition, measurement and use. Part II: Review of alternative measures**. *Med Care Rev*. 1982; **39**(2): 73–123.
[PubMed Abstract](#) | [Publisher Full Text](#)
- Huster KM, Patterson N, Schilperoord M, et al.: **Cesarean sections among Syrian refugees in Lebanon from december 2012/january 2013 to june 2013: probable causes and recommendations**. *Yale J Biol Med*. 2014; **87**(3): 269–288.
[PubMed Abstract](#) | [Free Full Text](#)
- IHME: **Lebanon profile**. 2018.
[Reference Source](#)
- Jha AK, Joynt KE, Orav EJ, et al.: **The long-term effect of premier pay for performance on patient outcomes**. *N Engl J Med*. 2012; **366**(17): 1606–1615.
[PubMed Abstract](#) | [Publisher Full Text](#)
- Khalife J, Rafeh N, Makouk J, et al.: **Hospital Contracting Reforms: The Lebanese Ministry of Public Health Experience**. *Health Systems & Reform*. 2017; **3**(1): 34–41.
[PubMed Abstract](#) | [Publisher Full Text](#)
- Kristensen SR, Meacock R, Turner AJ, et al.: **Long-term effect of hospital pay for performance on mortality in England**. *N Engl J Med*. 2014; **371**(6): 540–548.
[PubMed Abstract](#) | [Publisher Full Text](#)
- Kronfol N, Khalife J, Romanos J, et al.: **Observations on the Ministry of Public Health program of support to the hospitalization of patients in Lebanon**. *J Med Liban*. 2014; **62**(1): 33–39.
[PubMed Abstract](#) | [Publisher Full Text](#)
- Kruk M, Freedman L: **Assessing Health System Performance in Developing Countries: A Review of the Literature**. 2008.
[PubMed Abstract](#) | [Publisher Full Text](#)
- Lichtig L: **Hospital Information System for Case Mix Management**. New York: John Wiley and Sons Press. 1986.
- Lindenauer PK, Remus D, Roman S, et al.: **Public reporting and pay for performance in hospital quality improvement**. *N Engl J Med*. 2007; **356**(5): 486–496.
[PubMed Abstract](#) | [Publisher Full Text](#)
- Lopez AD, Shibuya K, Rao C, et al.: **Chronic obstructive pulmonary disease: current burden and future projections**. *Eur Respir J*. 2006; **27**(2): 397–412.
[PubMed Abstract](#) | [Publisher Full Text](#)
- Lopez Bernal J, Soumerai S, Gasparrini A: **A methodological framework for model selection in interrupted time series studies**. *J Clin Epidemiol*. 2018; **103**: 82–91.
[PubMed Abstract](#) | [Publisher Full Text](#)
- Macinko J, Dourado I, Aquino R, et al.: **Major Expansion Of Primary Care In Brazil Linked To Decline In Unnecessary Hospitalization**. *Health Aff (Millwood)*. 2010; **29**(12): 2149–2160.
[PubMed Abstract](#) | [Publisher Full Text](#)
- Mandavira R, Mehta N, Schilder A, et al.: **Effectiveness of UK provider financial incentives on quality of care: a systematic review**. *Br J Gen Pract*. 2017; **67**(664): e800–e815.
[PubMed Abstract](#) | [Publisher Full Text](#) | [Free Full Text](#)
- Mariotto A, Zeni L, Selle V, et al.: **Utilization of percutaneous transluminal coronary angioplasty for quality assurance in health care from 1983 to 1996**. *Int J Technol Assess Health Care*. 1999; **15**(3): 473–479.
[PubMed Abstract](#) | [Publisher Full Text](#)
- Mendez CM, Harrington DW, Christenson P, et al.: **Impact of hospital variables on case mix index as a marker of disease severity**. *Popul Health Manag*. 2014; **17**(1): 28–34.
[PubMed Abstract](#) | [Publisher Full Text](#) | [Free Full Text](#)
- Naci H, Soumerai SB: **History Bias, Study Design, and the Unfulfilled Promise of Pay-for-Performance Policies in Health Care**. *Prev Chronic Dis*. 2016; **13**: E82.
[PubMed Abstract](#) | [Publisher Full Text](#) | [Free Full Text](#)
- Park YT, Lee J, Lee J: **Association between Health Information Technology and Case Mix Index**. *Healthc Inform Res*. 2017; **23**(4): 322–327.
[PubMed Abstract](#) | [Publisher Full Text](#) | [Free Full Text](#)
- Penfold RB, Zhang F: **Use of interrupted time series analysis in evaluating health care quality improvements**. *Acad Pediatr*. 2013; **13**(6 Suppl): S38–44.
[PubMed Abstract](#) | [Publisher Full Text](#)
- Radu CP, Chiriac DN, Vladescu C: **Changing patient classification system for hospital reimbursement in Romania**. *Croat Med J*. 2010; **51**(3): 250–258.
[PubMed Abstract](#) | [Publisher Full Text](#) | [Free Full Text](#)
- Roberts M, Hsiao W, Berman P, et al.: **Getting Health Reform Right: A Guide to Improving Performance and Equity**. 2004; 4(4).
[Publisher Full Text](#)
- Ryan AM, Burgess JF Jr, Pesko MF, et al.: **The early effects of Medicare's mandatory hospital pay-for-performance program**. *Health Serv Res*. 2015; **50**(1): 81–97.
[PubMed Abstract](#) | [Publisher Full Text](#) | [Free Full Text](#)
- Services CFMM: **Details for title: FY 2011 Final Rule Data Files**. 2011.
[Reference Source](#)
- Smith R, Hanson K: **Health systems in low- and middle-income countries: an economic and policy perspective**. Oxford, Oxford University Press. 2012.
[Publisher Full Text](#)
- Soucat A, Dale E, Mathauer I, et al.: **Pay-for-Performance Debate: Not Seeing the Forest for the Trees**. *Health Systems & Reform*. 2017; **3**(2): 74–79.
[PubMed Abstract](#) | [Publisher Full Text](#)
- Stranges E, Friedman B: **Potentially Preventable Hospitalization Rates Declined for Older Adults, 2003-2007: Statistical Brief #83**. *Healthcare Cost*

and Utilization Project (HCUP) Statistical Briefs. Rockville (MD). 2006.
[PubMed Abstract](#)

Sukul D, Hoffman GJ, Nuliyalu U, *et al.*: **Association Between Medicare Policy Reforms and Changes in Hospitalized Medicare Beneficiaries' Severity of Illness.** *JAMA Netw Open.* 2019; **2**(5): e193290.
[PubMed Abstract](#) | [Publisher Full Text](#) | [Free Full Text](#)

Sutton M, Nikolova S, Boaden R, *et al.*: **Reduced mortality with hospital pay for performance in England.** *N Engl J Med.* 2012; **367**(19): 1821–8.
[PubMed Abstract](#) | [Publisher Full Text](#)

Tashobya CK, da Silveira VC, Ssengooba F, *et al.*: **Health systems performance assessment in low-income countries: learning from international experiences.** *Global Health.* 2014; **10**: 5.
[PubMed Abstract](#) | [Publisher Full Text](#) | [Free Full Text](#)

To T, Feldman W, Young W, *et al.*: **Hospitalization rates of children with gastroenteritis in Ontario.** *Can J Public Health.* 1996; **87**(1): 62–5.
[PubMed Abstract](#)

United Nations, D. o. E. a. S. A., Population Division: **World Population Prospects: The 2017 Revision.** DVD Edition. 2017.
[Reference Source](#)

Van Herck P, De Smedt D, Annemans L, *et al.*: **Systematic review: Effects, design choices, and context of pay-for-performance in health care.** *BMC Health Serv Res.* 2010; **10**: 247.
[PubMed Abstract](#) | [Publisher Full Text](#) | [Free Full Text](#)

Wadhwa RK, Joynt Maddox KE, Wasfy JH, *et al.*: **Association of the Hospital Readmissions Reduction Program With Mortality Among Medicare Beneficiaries Hospitalized for Heart Failure, Acute Myocardial Infarction, and Pneumonia.** *JAMA.* 2018; **320**(24): 2542–2552.
[PubMed Abstract](#) | [Publisher Full Text](#) | [Free Full Text](#)

Wasfy JH, Zigler CM, Choirat C, *et al.*: **Readmission Rates After Passage of the Hospital Readmissions Reduction Program: A Pre-Post Analysis.** *Ann Intern*

Med. 2017; **166**(5): 324–331.

[PubMed Abstract](#) | [Publisher Full Text](#) | [Free Full Text](#)

Weiss AJ, Elixhauser A: **Trends in Operating Room Procedures in U.S. Hospitals, 2001– 2011.** HCUP Statistical Brief #171. Rockville, MD., Agency for Healthcare Research and Quality. 2014.
[PubMed Abstract](#)

Werner RM, Kolstad JT, Stuart EA, *et al.*: **The effect of pay-for-performance in hospitals: lessons for quality improvement.** *Health Aff (Millwood).* 2011; **30**(4): 690–698.

[PubMed Abstract](#) | [Publisher Full Text](#)

Witter S, Fretheim A, Kessy FL, *et al.*: **Paying for performance to improve the delivery of health interventions in low- and middle-income countries.** *Cochrane Database Syst Rev.* 2012; (2): CD007899.

[PubMed Abstract](#) | [Publisher Full Text](#)

World Health Organization: **International Statistical Classification of Diseases and Related Health Problems.** 10th Revision 2019. 2006.
[Reference Source](#)

World Health Organization: **Systems thinking for health systems strengthening.** D. de Savigny and T. Adam. Geneva, Alliance for Health Policy and Systems Research, World Health Organization. 2009.

[Reference Source](#)

World Health Organization: **Health policy and systems research: a methodology reader.** L. Gilson. Geneva, Alliance for Health Policy and Systems Research, World Health Organization. 2012.

[Reference Source](#)

World Health Organization: **FluNet, Global Influenza Surveillance and Response System (GISRS).** 2019.

[Reference Source](#)

Yang CM, Reinke W: **Feasibility and validity of International Classification of Diseases based case mix indices.** *BMC Health Serv Res.* 2006; **6**: 125.

[PubMed Abstract](#) | [Publisher Full Text](#) | [Free Full Text](#)

Open Peer Review

Current Peer Review Status:  

Version 2

Reviewer Report 18 December 2020

<https://doi.org/10.21956/wellcomeopenres.18000.r41802>

© 2020 Shan L. This is an open access peer review report distributed under the terms of the [Creative Commons Attribution License](#), which permits unrestricted use, distribution, and reproduction in any medium, provided the original work is properly cited.



Linghan Shan

Department of Social Medicine, School of Public Health, Harbin Medical University, Harbin, Heilongjiang, China

Dear author, I think this is a high-quality study that can provide evidence for many policy researchers and policy makers.

Is the work clearly and accurately presented and does it cite the current literature?

Yes

Is the study design appropriate and is the work technically sound?

Yes

Are sufficient details of methods and analysis provided to allow replication by others?

Yes

If applicable, is the statistical analysis and its interpretation appropriate?

I cannot comment. A qualified statistician is required.

Are all the source data underlying the results available to ensure full reproducibility?

No source data required

Are the conclusions drawn adequately supported by the results?

Yes

Competing Interests: No competing interests were disclosed.

Reviewer Expertise: Health policy assessment; health insurance; health system reform

I confirm that I have read this submission and believe that I have an appropriate level of expertise to confirm that it is of an acceptable scientific standard.

Version 1

Reviewer Report 10 August 2020

<https://doi.org/10.21956/wellcomeopenres.17338.r39557>

© 2020 Shan L. This is an open access peer review report distributed under the terms of the [Creative Commons Attribution License](#), which permits unrestricted use, distribution, and reproduction in any medium, provided the original work is properly cited.

**Linghan Shan**

Department of Social Medicine, School of Public Health, Harbin Medical University, Harbin, Heilongjiang, China

Thank you for writing such a valuable and enlightening article, it is of an acceptable scientific standard, however, I have a number of small changes to the article, as follows:

1. In methods it was said that "We applied a systematic approach to assess the impact of the new policy on hospital performance." What is the framework of the systematic approach, what are the differences from previous studies, or what is the basis for it? I see that your explanation of "systematic approach" is scattered in the article. I hope it can be more clearly expressed.
2. In the Introduction it was said "The MoPH is the largest public payer, covering hospitalization for about 52% of Lebanese, who otherwise lack any insurance coverage for hospitalization (Ammar, 2009)." What is the coverage now? I want to know this information because it is directly related to the impact of payment reform on hospitals. High coverage means that the payer has strong bargaining power, so the reform of payment mode will bring greater binding force to hospitals, otherwise, the binding force will be small.
3. I would like to see more details about the pre-reform payment mechanism, restrictive conditions of reform (such as you said "lack of local Diagnosis Related Groups (DRGs) on which most casemix systems rely on"), characteristics, advantages and disadvantages of the reform.
4. I see that your suggestions are all about recommending this reform measure. Do you have any relevant suggestions for the sustainable development of this reform measure? Is there a need for more supporting policies to further improve efficiency? Does this policy reform need further improvement?

Is the work clearly and accurately presented and does it cite the current literature?

Yes

Is the study design appropriate and is the work technically sound?

Yes

Are sufficient details of methods and analysis provided to allow replication by others?

Yes

If applicable, is the statistical analysis and its interpretation appropriate?

I cannot comment. A qualified statistician is required.

Are all the source data underlying the results available to ensure full reproducibility?

No source data required

Are the conclusions drawn adequately supported by the results?

Yes

Competing Interests: No competing interests were disclosed.

Reviewer Expertise: Health policy assessment; health insurance; health system reform

I confirm that I have read this submission and believe that I have an appropriate level of expertise to confirm that it is of an acceptable scientific standard, however I have significant reservations, as outlined above.

Author Response 06 Oct 2020

Jade Khalife, Faculty of Medicine at Lund University, Lund, Sweden

We are grateful for the valuable feedback received from the reviewer, which we have used to improve the manuscript. Kindly find below our responses on a point-by-point basis.

- In methods it was said that "We applied a systematic approach to assess the impact of the new policy on hospital performance." What is the framework of the systematic approach, what are the differences from previous studies, or what is the basis for it? I see that your explanation of "systematic approach" is scattered in the article. I hope it can be more clearly expressed.

We have clarified our approach at the beginning of the discussion section to define what we mean by systematic approach. Our approach involved at a first stage examining all hospitalizations by case type, lengths of stay and hospital ownerships for casemix index changes. This was followed by a second stage for identifying and quantifying which diagnoses and procedures explain changes identified during the first stage.

- In the Introduction it was said "The MoPH is the largest public payer, covering hospitalization for about 52% of Lebanese, who otherwise lack any insurance coverage for hospitalization (Ammar, 2009)." What is the coverage now? I want to know this information because it is directly related to the impact of payment reform on hospitals. High coverage means that the payer has strong bargaining power, so the reform of payment mode will bring greater binding force to hospitals, otherwise, the binding force will be small.

The coverage in 2014 is expected to be similar (52%), according to the Ministry of Public Health. A more updated estimate is not available. However, this figure is expected to have increased since about 2018, as a consequence of increasing unemployment, which results in more citizens having coverage transferred from the National Social Security Fund to the Ministry of Public Health.

- I would like to see more details about the pre-reform payment mechanism, restrictive conditions of reform (such as you said “lack of local Diagnosis Related Groups (DRGs) on which most casemix systems rely on”), characteristics, advantages and disadvantages of the reform.

We have added a paragraph under ‘Policy reform’ to provide more detailed background information on the pre-reform period. The reform was used to categorize hospitals into the three reimbursement categories, however the medical cases remained reimbursed through fee-for-service, and surgical cases through a pre-defined flat-rate. The initiative had to solely utilize the reimbursement-performance link, but not hospital budgets, due to historical and political constraints. In the interest of space, we refer the reader to the following article where we have previously elaborated on some aspects:

<https://www.tandfonline.com/doi/full/10.1080/23288604.2016.1272979>; ref.25, Khalife et al. 2017.

- I see that your suggestions are all about recommending this reform measure. Do you have any relevant suggestions for the sustainable development of this reform measure? Is there a need for more supporting policies to further improve efficiency? Does this policy reform need further improvement?

We have added some text under the conclusion towards this. The commitment of the MoPH to maintain the reimbursement-performance linkage is necessary, including ongoing evaluations and development. This would likely involve annual or bi-annual generation of hospital performance results, based on performance measures that have been proven beneficial and meaningful for inclusion.

Competing Interests: No competing interests were disclosed.

Reviewer Report 08 June 2020

<https://doi.org/10.21956/wellcomeopenres.17338.r38761>

© 2020 Kahur K. This is an open access peer review report distributed under the terms of the [Creative Commons Attribution License](#), which permits unrestricted use, distribution, and reproduction in any medium, provided the original work is properly cited.



Kristiina Kahur 

Nordic Casemix Centre, Helsinki, Finland

Thank you for this very interesting research which is somehow unique on that field. Below are some comments and reflections which raised while reading the article:

- In conclusions it was said that “This increase was mainly attributed to decreased unnecessary hospitalizations and was accompanied by improved medical discharge coding practices”. I am wondering how was the improvement of coding assessed and is improved coding necessarily referring to increase of effectiveness?
- It was said in the article that the reimbursement was linked to a composite hospital total

performance score (TPS) which means that the higher the CMI the higher the TPS. CMI is explicitly related to coding quality. It is known from different researches that coding activity is often incentivized by payments, thus this can incentivize the hospitals to increase the coding activity and perhaps up-coding in some cases which probably happened also in Lebanon. How much this could have been a case?

- Related to previous comment - in the article it was mentioned that “providers do not have access to the weights used in casemix evaluation”. This might limit the gaming and up-coding indeed. But on other hand it also makes the system non-transparent and weights used for calculation the CMI will be as a black box within the system which might have negative impact on improvement of coding quality.
- Given that there is no DRG system in place in Lebanon it somehow limited the development of CMI by using DRG cost-weights which would have been a conventional way when DRG system would have been used. The chosen approach was compensating the missing DRG cost-weights. However, it did not use the information/variables which would potentially have had impact on weights and CMI calculation. E.g. variable like age was not available for this study (as indicated in Data sources chapter) which would have had impact on weights in some cases. Also information about co-morbidities and complications was not taken into account which might be cost driver and thus, may have had impact on weights and CMI. It was also interesting that the medical cases were divided based on LOS whereas the surgical ones were not. In conventional cost-weight calculation also the cost/LOS outliers are taken into account which was not systematically the case in this study. Having DRG system in place, the calculations of CMI would be perhaps more consistent and internationally comparable by taking into account all possible variables a casemix system is using and which were not taken into account in this study.
- Given that five-year cost averages was used for calculation of CMI, how (if at all) was the inflation and other factors influencing the cost throughout the years taken into account? In other words, was the weight of one particular ICD or procedure code the same throughout the five-year period?
- It was mentioned in the article that the weight was calculated for each ICD (and procedure code). In table 4 it remains unclear if the separate weights were calculated e.g. for diagnosis code J44.1 and J44. Or was the separate weight calculated for codes J20-J20.9 and J20. However, table 5 which refers to diagnosis codes with the greatest change in terms of CMI, shows different values e.g. for code P22 and P22.0. This is somehow confusing because in general, subcodes of three-character diagnosis code should be clinically and economically meaningful and should have one weight, i.e. codes P22 and P22.0 should be similar in terms of clinical severity and cost. In general (and this really depends on national coding guidelines), if a three-character diagnosis code has subcodes, then the subcode as more specific one should be used instead of three-character code.

Is the work clearly and accurately presented and does it cite the current literature?

Yes

Is the study design appropriate and is the work technically sound?

Yes

Are sufficient details of methods and analysis provided to allow replication by others?

Yes

If applicable, is the statistical analysis and its interpretation appropriate?

I cannot comment. A qualified statistician is required.

Are all the source data underlying the results available to ensure full reproducibility?

No source data required

Are the conclusions drawn adequately supported by the results?

Yes

Competing Interests: No competing interests were disclosed.

Reviewer Expertise: Casemix systems' implementation, maintenance and development. Primary classifications. Coding quality. Contracting health care providers. Payment methods. Health financing reforms.

I confirm that I have read this submission and believe that I have an appropriate level of expertise to confirm that it is of an acceptable scientific standard.

Author Response 06 Oct 2020

Jade Khalife, Faculty of Medicine at Lund University, Lund, Sweden

We are grateful for the valuable feedback received from the reviewer, which we have used to improve the manuscript. Kindly find below our responses on a point-by-point basis.

- In conclusions it was said that "This increase was mainly attributed to decreased unnecessary hospitalizations and was accompanied by improved medical discharge coding practices". I am wondering how was the improvement of coding assessed and is improved coding necessarily referring to increase of effectiveness?

Improved coding was assessed based on the changes in the coding of chemotherapy cases under the chemotherapy code (Z51.1), particularly breast cancer and leukemia, and the accompanied changes in the coding of neoplasms (C00-D49); this explained the greatest change on short-stay CMI. That these were indeed chemotherapy sessions, rather than hospitalization for investigation, was confirmed by their short length of stay (same/one-day) and their hospitalization cost. Effectively, this meant that hospitals were correctly coding chemotherapy sessions. Furthermore, we also found a shift to full coding digits and more specific codes, among short and medium-stay cases, specifically among neoplasms, pneumonia, COPD, respiratory distress of newborn, and diarrhea and gastroenteritis.

Our findings regarding improved coding were used to explain increased casemix index among short-stay cases, specifically the level changes. These do not refer to increased effectiveness, but would reflect improved code validity for use in the system. Improved effectiveness in our investigation refers to decreased unnecessary hospitalizations. We have clarified this in the

'conclusions' section.

- It was said in the article that the reimbursement was linked to a composite hospital total performance score (TPS) which means that the higher the CMI the higher the TPS. CMI is explicitly related to coding quality. It is known from different researches that coding activity is often incentivized by payments, thus this can incentivize the hospitals to increase the coding activity and perhaps up-coding in some cases which probably happened also in Lebanon. How much this could have been a case?

Although up-coding is generally a recognized issue in the Lebanese healthcare setting. However, given that providers were unaware of the TPS prior to the intervention in August 2014, we would not expect that there would have been an increase in up-coding above what are background levels. This similarly applies to increased coding activity, but only within surgical and mixed cases, where multiple-coding is used. Nonetheless, we acknowledge this factor will likely have to be more closely considered in future evaluations, with providers having become more aware of the incentive potential of up-coding, and other potential gaps to game the system.

- Related to previous comment - in the article it was mentioned that "providers do not have access to the weights used in casemix evaluation". This might limit the gaming and up-coding indeed. But on other hand it also makes the system non-transparent and weights used for calculation the CMI will be as a black box within the system which might have negative impact on improvement of coding quality.

The lack of access to the weights used does limit transparency. However, based on past experience and under the existing conditions, this was considered by the Ministry of Public Health as an important feature to limit the abuse/miss-use of hospitalization among some providers. This has been possible to maintain thus far due to the joint commitment of the Syndicate of Private Hospitals towards the P4P initiative. Nevertheless, increasing transparency regarding weights and the TPS process would be important goals for future system development.

- Given that there is no DRG system in place in Lebanon it somehow limited the development of CMI by using DRG cost-weights which would have been a conventional way when DRG system would have been used. The chosen approach was compensating the missing DRG cost-weights. However, it did not use the information/variables which would potentially have had impact on weights and CMI calculation. E.g. variable like age was not available for this study (as indicated in Data sources chapter) which would have had impact on weights in some cases. Also information about co-morbidities and complications was not taken into account which might be cost driver and thus, may have had impact on weights and CMI. It was also interesting that the medical cases were divided based on LOS whereas the surgical ones were not. In conventional cost-weight calculation also the cost/LOS outliers are taken into account which was not systematically the case in this study. Having DRG system in place, the calculations of CMI would be perhaps more consistent and internationally comparable by taking into account all possible variables a casemix system is using and which were not taken into account in this study.

This is largely correct, although it is also pertinent to recognize the existing institutional context within which the CMI-based reimbursement system is developing. We have added a paragraph

under 'strengths and limitations' to address age and comorbidities. We acknowledge that inclusion of age as a variable for casemix index calculation would be more advantageous. Its inclusion has been discussed at length with and within the MoPH. The conclusions of these discussions were that, although some diagnoses and procedures would entail greater complexity or cost for older patients, there was insufficient information for selecting which of these to adjust for, and to what extent, within the Lebanese setting. This remains an important area for future investigations and development of this system. We note that in the 2018 update of the Total Performance Score, the proportion of elderly was captured as a factor, and thus had some influence on determining hospital reimbursement tiers; this was to incentivize hospitals away from avoiding elderly patients.

We also acknowledge the importance of capturing comorbidities within casemix index calculation. Unfortunately, the MoPH and hospitals do not routinely code for comorbidities; the field for these is 'optional', and as such, any entries were unsuitable for use in this study. The MoPH had agreed in principle that this factor should be included, however there were concerns regarding practical implementation and potential for miss-use. Therefore, this awaits a more comprehensive revision of the coding-reimbursement-auditing mechanisms.

Medical cases were divided by length of stay on the basis that they are reimbursed by fee-for-service, and length of stay among these cases has a direct relation to the cost submitted by hospitals for MoPH reimbursement. However, surgical cases are reimbursed on a flat-rate basis, regardless of length of stay. In this investigation we maintained the same categories used by the MoPH to calculate casemix index. However, we acknowledge that development of the system to account for length of stay also among surgical cases would allow a more accurate measurement of case complexity.

- Given that five-year cost averages was used for calculation of CMI, how (if at all) was the inflation and other factors influencing the cost throughout the years taken into account? In other words, was the weight of one particular ICD or procedure code the same throughout the five-year period?

For surgical cases (flat-rate), the MoPH updated the procedure costs in March 2013, which remained in use until the 2018 update. These updates increased the base-rate of all procedures, to account for inflation. We used weights based on the March 2013 update, also retrospectively up to 2011. For medical cases (fee-for-service), the MoPH undertook a hospital-bed update (base-rate), which is only one component of the bill charged by hospitals to the MoPH, but nevertheless represents an internal accounting for inflation. For medical cases, we used the 5-year average per ICD10 code, without further adjustment.

- It was mentioned in the article that the weight was calculated for each ICD (and procedure code). In table 4 it remains unclear if the separate weights were calculated e.g. for diagnosis code J44.1 and J44. Or was the separate weight calculated for codes J20-J20.9 and J20. However, table 5 which refers to diagnosis codes with the greatest change in terms of CMI, shows different values e.g. for code P22 and P22.0. This is somehow confusing because in general, subcodes of three-character diagnosis code should be clinically and economically meaningful and should have one weight, i.e. codes P22 and P22.0 should be similar in terms of clinical severity and cost. In general

(and this really depends on national coding guidelines), if a three-character diagnosis code has subcodes, then the subcode as more specific one should be used instead of three-character code.

Separate weights were calculated for each code, whether three or four-character. Therefore, J44.1 and J44 had different weights (differing by 14%), as did P22 and P22.0. The decision to have separate weights was based on the review of various codes, which in some cases revealed considerable differences between three and four-character codes. Acknowledging that this is likely due to a mix of factors, including imprecise coding practices and actual diagnosis, but lacking information to resolve these differences, we choose to use weights for each three and four-character code. This approach is similar to that used in the calculation of casemix index by the MoPH. The use of three-character codes is also due for phasing out by the MoPH, which will require four-character codes for all hospitalizations.

Competing Interests: No competing interests were disclosed.

Reviewer Response 21 Dec 2020

Kristiina Kahur, Nordic Casemix Centre, Helsinki, Finland

Thanks a lot for clarifications. Good luck!

Competing Interests: No competing interests were disclosed.
